

Product datasheet

Anti-RIZ1 antibody ab204110

2 Images

Overview

Product name	Anti-RIZ1 antibody
Description	Rabbit polyclonal to RIZ1
Host species	Rabbit
Tested applications	Suitable for: IHC-P
Species reactivity	Reacts with: Mouse, Rat, Human
Immunogen	<p>Synthetic peptide within Human RIZ1 aa 1250-1300 conjugated to Keyhole Limpet Haemocyanin (KLH). The exact sequence is proprietary.</p> <p>Sequence:</p> <p>EDPLETSKEEEEELNDSSEELYTTIKIMASGI KTKDPDVRGLNQHYPSEFKP</p> <p>Database link: Q13029</p>

 [Run BLAST with](#)

 [Run BLAST with](#)

General notes

Reproducibility is key to advancing scientific discovery and accelerating scientists' next breakthrough.

Abcam is leading the way with our range of recombinant antibodies, knockout-validated antibodies and knockout cell lines, all of which support improved reproducibility.

We are also planning to innovate the way in which we present recommended applications and species on our product datasheets, so that only applications & species that have been tested in our own labs, our suppliers or by selected trusted collaborators are covered by our Abpromise™ guarantee.

In preparation for this, we have started to update the applications & species that this product is Abpromise guaranteed for.

We are also updating the applications & species that this product has been “predicted to work with,” however this information is not covered by our Abpromise guarantee.

Applications & species from publications and Abreviews that have not been tested in our own labs or in those of our suppliers are not covered by the Abpromise guarantee.

Please check that this product meets your needs before purchasing. If you have any questions, special requirements or concerns, please send us an inquiry and/or contact our Support team ahead of purchase. Recommended alternatives for this product can be found below, as well as customer reviews and Q&As.

Properties

Form	Liquid
Storage instructions	Shipped at 4°C. Store at +4°C short term (1-2 weeks). Upon delivery aliquot. Store at -20°C long term. Avoid freeze / thaw cycle.
Storage buffer	Preservative: 0.09% Sodium azide Constituents: 50% Glycerol, 0.01% BSA
Purity	Protein A purified
Clonality	Polyclonal
Isotype	IgG

Applications

Our [Abpromise guarantee](#) covers the use of **ab204110** in the following tested applications.

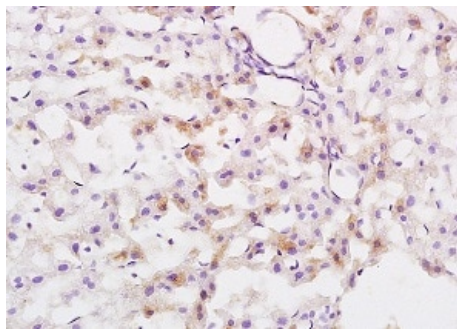
The application notes include recommended starting dilutions; optimal dilutions/concentrations should be determined by the end user.

Application	Abreviews	Notes
IHC-P		1/100 - 1/500. When using a fluorescent probe the recommended dilution is 1/50-1/200.

Target

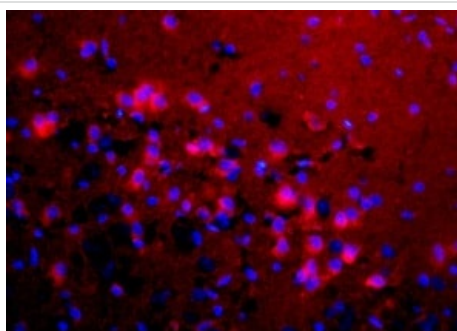
Function	S-adenosyl-L-methionine-dependent histone methyltransferase that specifically methylates 'Lys-9' of histone H3. May function as a DNA-binding transcription factor. Binds to the macrophage-specific TPA-responsive element (MTE) of the HMOX1 (heme oxygenase 1) gene and may act as a transcriptional activator of this gene.
Tissue specificity	Highly expressed in retinoblastoma cell lines and in brain tumors. Also expressed in a number of other cell lines and in brain, heart, skeletal muscle, liver and spleen. Isoform 1 is expressed in testis at much higher level than isoform 3.
Sequence similarities	Contains 8 C2H2-type zinc fingers. Contains 1 SET domain.
Cellular localization	Nucleus.

Images



Immunohistochemistry (Formalin/PFA-fixed paraffin-embedded sections) - Anti-RIZ1 antibody (ab204110)

Immunohistochemical analysis of formalin-fixed, paraffin-embedded Rat liver tissue labeling RIZ1 with ab204110 at 1/200 dilution, followed by conjugation to the secondary antibody and DAB staining.



Immunohistochemistry (Formalin/PFA-fixed paraffin-embedded sections) - Anti-RIZ1 antibody (ab204110)

Immunohistochemical analysis of formalin-fixed, paraffin-embedded Rat brain tissue labeling RIZ1 with ab204110 at 1/200 dilution. The secondary antibody was Goat Anti-Rabbit IgG, Cy3 conjugated, used at 1/200 dilution for 40 minutes at 37°C. DAPI was used to stain the cell nuclei.

Please note: All products are "FOR RESEARCH USE ONLY. NOT FOR USE IN DIAGNOSTIC PROCEDURES"

Our Abpromise to you: Quality guaranteed and expert technical support

- Replacement or refund for products not performing as stated on the datasheet
- Valid for 12 months from date of delivery
- Response to your inquiry within 24 hours
- We provide support in Chinese, English, French, German, Japanese and Spanish
- Extensive multi-media technical resources to help you
- We investigate all quality concerns to ensure our products perform to the highest standards

If the product does not perform as described on this datasheet, we will offer a refund or replacement. For full details of the Abpromise, please visit <https://www.abcam.com/abpromise> or contact our technical team.

Terms and conditions

- Guarantee only valid for products bought direct from Abcam or one of our authorized distributors