


Product datasheet

Anti-RNA polymerase II RPB1 antibody ab140509

2 References 3 Images

Overview

Product name	Anti-RNA polymerase II RPB1 antibody
Description	Goat polyclonal to RNA polymerase II RPB1
Host species	Goat
Tested applications	Suitable for: WB, IP
Species reactivity	Reacts with: Mouse, Human Predicted to work with: Rat, Rabbit, Cow, Dog, Pig, Chimpanzee, Plants, Zebrafish, Rhesus monkey, Gorilla, Soybean, Orangutan, Xenopus tropicalis 
Immunogen	Synthetic peptide corresponding to a region within the C terminal repeat region of Human RNA polymerase II RPB1 (NP_000928.1).
Positive control	293T, HeLa, Jurkat and NIH3T3 whole cell lysates

Properties

Form	Liquid
Storage instructions	Shipped at 4°C. Store at +4°C.
Storage buffer	Preservative: 0.09% Sodium azide Constituent: 99% Tris citrate/phosphate pH: 7-8
Purity	Immunogen affinity purified
Purification notes	ab140509 was affinity purified using an epitope specific to RNA polymerase II RPB1 immobilized on a solid support.
Clonality	Polyclonal
Isotype	IgG

Applications

Our [Abpromise guarantee](#) covers the use of **ab140509** in the following tested applications.

The application notes include recommended starting dilutions; optimal dilutions/concentrations should be determined by the end user.

Application	Abreviews	Notes
WB		1/1000 - 1/5000. Predicted molecular weight: 217 kDa.
IP		Use at 2-10 µg/mg of lysate.

Target

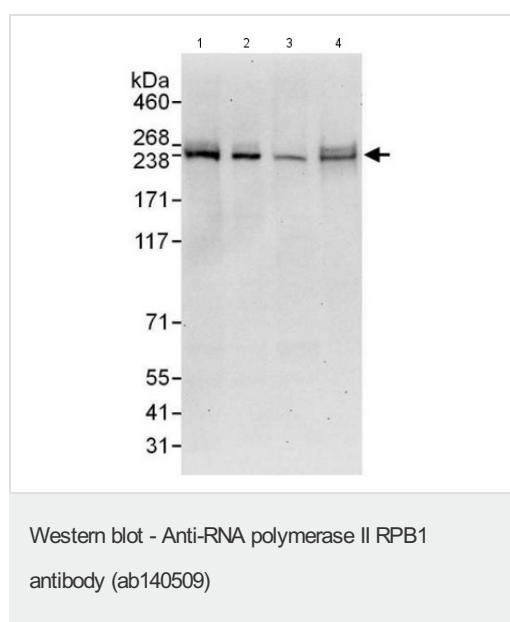
Relevance

RPB1 is a subunit of RNA polymerase II which catalyses transcription of RNA from DNA. RPB1 forms the polymerase active center together with the second largest subunit. Pol II is the central component of the basal RNA polymerase II transcription machinery. It is composed of mobile elements that move relative to each other. RPB1 is part of the core element with the central large cleft, the clamp element that moves to open and close the cleft and the jaws that are thought to grab the incoming DNA template.

Cellular localization

Nuclear

Images



All lanes : Anti-RNA polymerase II RPB1 antibody (ab140509) at 0.4 µg/ml

Lane 1 : 293T whole cell lysate at 50 µg

Lane 2 : 293T whole cell lysate at 15 µg

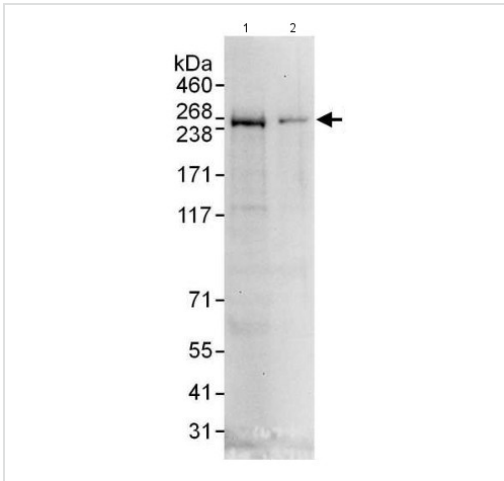
Lane 3 : HeLa whole cell lysate at 50 µg

Lane 4 : Jurkat whole cell lysate at 50 µg

Developed using the ECL technique.

Predicted band size: 217 kDa

Exposure time: 30 seconds



Western blot - Anti-RNA polymerase II RPB1 antibody (ab140509)

All lanes : Anti-RNA polymerase II RPB1 antibody (ab140509) at 1 µg/ml

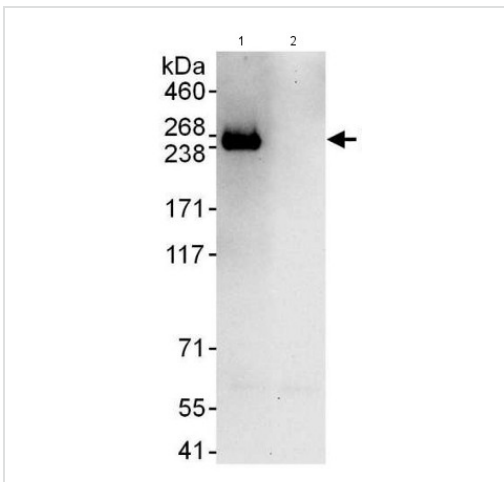
Lane 1 : NIH3T3 whole cell lysate at 50 µg

Lane 2 : NIH3T3 whole cell lysate at 15 µg

Developed using the ECL technique.

Predicted band size: 217 kDa

Exposure time: 30 seconds



Immunoprecipitation - Anti-RNA polymerase II RPB1 antibody (ab140509)

Immunoprecipitation of RNA polymerase II RPB1 from 293T whole cell lysate using ab140509 at 6 µg/mg lysate (1 mg of lysate for IP; 20% of IP loaded). For blotting immunoprecipitated RNA polymerase II RPB1, ab140509 was used at 1 µg/ml.

Detection: chemiluminescence with an exposure time of 30 seconds.

Please note: All products are "FOR RESEARCH USE ONLY. NOT FOR USE IN DIAGNOSTIC PROCEDURES"

Our Abpromise to you: Quality guaranteed and expert technical support

- Replacement or refund for products not performing as stated on the datasheet
- Valid for 12 months from date of delivery
- Response to your inquiry within 24 hours
- We provide support in Chinese, English, French, German, Japanese and Spanish
- Extensive multi-media technical resources to help you
- We investigate all quality concerns to ensure our products perform to the highest standards

If the product does not perform as described on this datasheet, we will offer a refund or replacement. For full details of the Abpromise, please visit <https://www.abcam.com/abpromise> or contact our technical team.

Terms and conditions

- Guarantee only valid for products bought direct from Abcam or one of our authorized distributors