

Product datasheet

Anti-Robo2 antibody - C-terminal ab200378

1 Image

Overview

Product name	Anti-Robo2 antibody - C-terminal
Description	Rabbit polyclonal to Robo2 - C-terminal
Host species	Rabbit
Tested applications	Suitable for: IHC-P
Species reactivity	Reacts with: Human
Immunogen	Synthetic peptide within Human Robo2 (C terminal). The exact sequence is proprietary. Database link: Q9HCK4
Positive control	Human breast cancer tissue.

Properties

Form	Liquid
Storage instructions	Shipped at 4°C. Store at +4°C short term (1-2 weeks). Upon delivery aliquot. Store at -20°C long term. Avoid freeze / thaw cycle.
Storage buffer	pH: 7.3 Preservative: 0.05% Sodium azide Constituents: 49% PBS, 50% Glycerol
Purity	Immunogen affinity purified
Clonality	Polyclonal
Isotype	IgG

Applications

Our [Abpromise guarantee](#) covers the use of **ab200378** in the following tested applications.

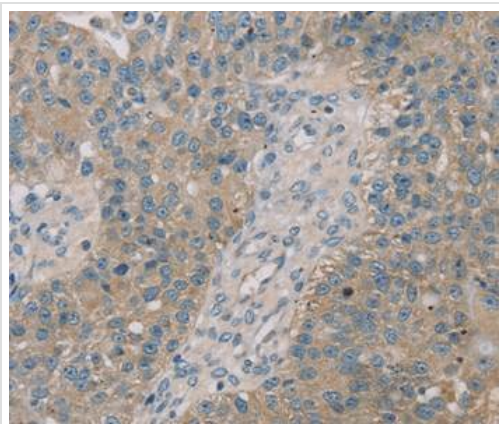
The application notes include recommended starting dilutions; optimal dilutions/concentrations should be determined by the end user.

Application	Abreviews	Notes
IHC-P		1/25 - 1/100. Perform heat mediated antigen retrieval before commencing with IHC staining protocol.

Target

Function	Receptor for SLIT2, and probably SLIT1, which are thought to act as molecular guidance cue in cellular migration, including axonal navigation at the ventral midline of the neural tube and projection of axons to different regions during neuronal development.
Involvement in disease	Defects in ROBO2 are the cause of vesicoureteral reflux type 2 (VUR2) [MIM:610878]. VUR is a complex, genetically heterogeneous developmental disorder characterized by the retrograde flow of urine from the bladder into the ureter and is associated with reflux nephropathy, the cause of 15% of end-stage renal disease in children and young adults. Note=A chromosomal aberration involving ROBO2 is a cause of multiple congenital abnormalities, including severe bilateral VUR with ureterovesical junction defects. Translocation t(Y;3)(p11;p12) with PCDH11Y. This translocation disrupts ROBO2 and produces dominant-negative ROBO2 proteins that abrogate SLIT-ROBO signaling in vitro.
Sequence similarities	Belongs to the immunoglobulin superfamily. ROBO family. Contains 3 fibronectin type-III domains. Contains 5 Ig-like C2-type (immunoglobulin-like) domains.
Cellular localization	Membrane.

Images



Immunohistochemical analysis of paraffin-embedded Human breast cancer tissue labeling Robo2 with ab200378 at 1/35 dilution.

Immunohistochemistry (Formalin/PFA-fixed paraffin-embedded sections) - Anti-Robo2 antibody - C-terminal (ab200378)

Please note: All products are "FOR RESEARCH USE ONLY. NOT FOR USE IN DIAGNOSTIC PROCEDURES"

Our Abpromise to you: Quality guaranteed and expert technical support

- Replacement or refund for products not performing as stated on the datasheet
- Valid for 12 months from date of delivery
- Response to your inquiry within 24 hours
- We provide support in Chinese, English, French, German, Japanese and Spanish
- Extensive multi-media technical resources to help you

- We investigate all quality concerns to ensure our products perform to the highest standards

If the product does not perform as described on this datasheet, we will offer a refund or replacement. For full details of the Abpromise, please visit <https://www.abcam.com/abpromise> or contact our technical team.

Terms and conditions

- Guarantee only valid for products bought direct from Abcam or one of our authorized distributors