

Product datasheet

Anti-RP105 antibody [MHR73-11] - Low endotoxin, Azide free ab171238

1 Image

Overview

| | |
|----------------------------|----------------------------------------------------------------------------------|
| Product name | Anti-RP105 antibody [MHR73-11] - Low endotoxin, Azide free |
| Description | Mouse monoclonal [MHR73-11] to RP105 - Low endotoxin, Azide free |
| Host species | Mouse |
| Tested applications | Suitable for: Functional Studies, Flow Cyt |
| Species reactivity | Reacts with: Human |
| Immunogen | The details of the immunogen for this antibody are not available. |
| Positive control | Human peripheral blood leukocyte cells. |
| General notes | Endotoxin Level: Less than 0.001 ng/µg antibody, as determined by the LAL assay. |

Properties

| | |
|-----------------------------|-----------------------------------------------------------------------------------------------------------------------------------|
| Form | Liquid |
| Storage instructions | Shipped at 4°C. Store at +4°C short term (1-2 weeks). Upon delivery aliquot. Store at -20°C long term. Avoid freeze / thaw cycle. |
| Storage buffer | pH: 7.20 Constituent: 100% PBS |
| Purity | Protein G purified |
| Clonality | Monoclonal |
| Clone number | MHR73-11 |
| Isotype | IgG1 |
| Light chain type | kappa |

Applications

Our [Abpromise guarantee](#) covers the use of **ab171238** in the following tested applications.

The application notes include recommended starting dilutions; optimal dilutions/concentrations should be determined by the end user.

| Application | Abreviews | Notes |
|-------------|-----------|-------|
|-------------|-----------|-------|

Functional Studies

Use at an assay dependent concentration.
ab171238 has been reported in in vitro functional studies.

Flow Cyt

Use at an assay dependent concentration.
ab171238 can be used at less than or equal to 1 µg per test. A test is defined as the amount (µg) of antibody that will stain a cell sample in a final volume of 100 µL. Cell number should be determined empirically but can range from 10e5 to 10e8 cells/test. It is recommended that the antibody be carefully titrated for optimal performance in the assay of interest.

[ab170190](#) - Mouse monoclonal IgG1, is suitable for use as an isotype control with this antibody.

Target

Function

May cooperate with MD-1 and TLR4 to mediate the innate immune response to bacterial lipopolysaccharide (LPS) in B-cells. Leads to NF-kappa-B activation. Also involved in the life/death decision of B-cells.

Tissue specificity

Expressed mainly on mature peripheral B cells. Detected in spleen, lymph node and appendix. Not detected in pre-B and -T cells.

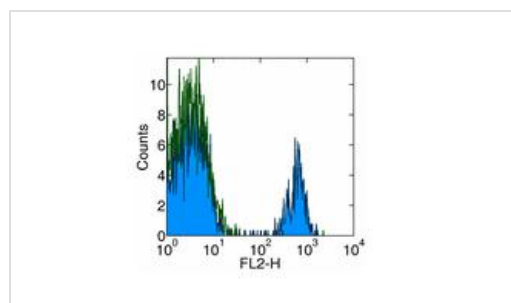
Sequence similarities

Belongs to the Toll-like receptor family.
Contains 19 LRR (leucine-rich) repeats.
Contains 1 LRRCT domain.

Cellular localization

Cell membrane.

Images



Flow cytometry analysis of Human peripheral blood cells (10e5 to 10e8) labeling RP105 with the PE conjugated version of ab171238. Appropriate isotype controls were used (open histogram). Cells in the lymphocyte population were used for analysis.

Flow Cytometry - Anti-RP105 antibody [MHR73-11] - Low endotoxin, Azide free (ab171238)

Please note: All products are "FOR RESEARCH USE ONLY AND ARE NOT INTENDED FOR DIAGNOSTIC OR THERAPEUTIC USE"

Our Abpromise to you: Quality guaranteed and expert technical support

- Replacement or refund for products not performing as stated on the datasheet
- Valid for 12 months from date of delivery
- Response to your inquiry within 24 hours

- We provide support in Chinese, English, French, German, Japanese and Spanish
- Extensive multi-media technical resources to help you
- We investigate all quality concerns to ensure our products perform to the highest standards

If the product does not perform as described on this datasheet, we will offer a refund or replacement. For full details of the Abpromise, please visit <https://www.abcam.com/abpromise> or contact our technical team.

Terms and conditions

- Guarantee only valid for products bought direct from Abcam or one of our authorized distributors