


Product datasheet

Anti-RPA70 antibody ab97338

[2 References](#) [3 Images](#)

Overview

Product name	Anti-RPA70 antibody
Description	Rabbit polyclonal to RPA70
Host species	Rabbit
Tested applications	Suitable for: WB, IHC-P, ICC/IF
Species reactivity	Reacts with: Human Predicted to work with: Mouse, Rat, Cow 
Immunogen	Recombinant protein fragment containing a sequence corresponding to a region within amino acids 369 and 616 of Human RPA70 (NP_002936).
Positive control	293T, A431, HepG2, Molt-4, and Raji cell lysates. H1299 and HeLaS3 whole cell lysate. HeLa cells for IF. Cal27 xenograft for IHC.
General notes	<p>Reproducibility is key to advancing scientific discovery and accelerating scientists' next breakthrough.</p> <p>Abcam is leading the way with our range of recombinant antibodies, knockout-validated antibodies and knockout cell lines, all of which support improved reproducibility.</p> <p>We are also planning to innovate the way in which we present recommended applications and species on our product datasheets, so that only applications & species that have been tested in our own labs, our suppliers or by selected trusted collaborators are covered by our Abpromise™ guarantee.</p> <p>In preparation for this, we have started to update the applications & species that this product is Abpromise guaranteed for.</p> <p>We are also updating the applications & species that this product has been “predicted to work with,” however this information is not covered by our Abpromise guarantee.</p> <p>Applications & species from publications and Abreviews that have not been tested in our own labs or in those of our suppliers are not covered by the Abpromise guarantee.</p> <p>Please check that this product meets your needs before purchasing. If you have any questions, special requirements or concerns, please send us an inquiry and/or contact our Support team ahead of purchase. Recommended alternatives for this product can be found below, as well as customer reviews and Q&As.</p>

Properties

Form	Liquid
Storage instructions	Shipped at 4°C. Upon delivery aliquot. Store at -20°C or -80°C. Avoid freeze / thaw cycle.
Storage buffer	pH: 7.00 Preservative: 0.025% Proclin 300 Constituents: 79% PBS, 20% Glycerol (glycerin, glycerine)
Purity	Immunogen affinity purified
Clonality	Polyclonal
Isotype	IgG

Applications

Our [Abpromise guarantee](#) covers the use of **ab97338** in the following tested applications.

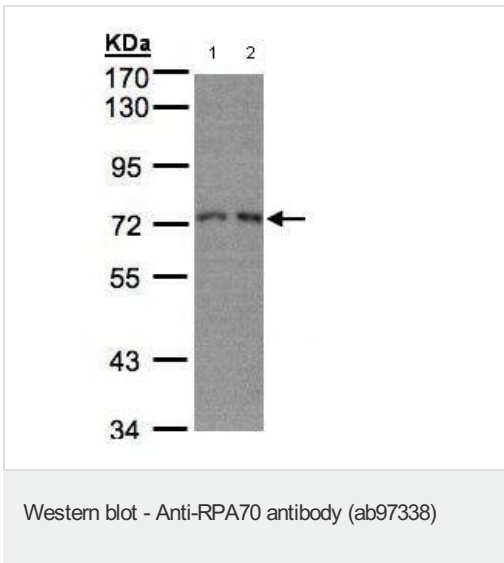
The application notes include recommended starting dilutions; optimal dilutions/concentrations should be determined by the end user.

Application	Abreviews	Notes
WB		1/500 - 1/3000. Predicted molecular weight: 68 kDa.
IHC-P		1/100 - 1/250.
ICC/IF		1/100 - 1/200.

Target

Function	Plays an essential role in several cellular processes in DNA metabolism including replication, recombination and DNA repair. Binds and subsequently stabilizes single-stranded DNA intermediates and thus prevents complementary DNA from reannealing. Functions as component of the alternative replication protein A complex (aRPA). aRPA binds single-stranded DNA and probably plays a role in DNA repair; it does not support chromosomal DNA replication and cell cycle progression through S-phase. In vitro, aRPA cannot promote efficient priming by DNA polymerase alpha but supports DNA polymerase delta synthesis in the presence of PCNA and replication factor C (RFC), the dual incision/excision reaction of nucleotide excision repair and RAD51-dependent strand exchange.
Sequence similarities	Belongs to the replication factor A protein 1 family.
Post-translational modifications	Phosphorylated upon DNA damage, probably by ATM or ATR. Sumoylated on lysine residues Lys-449 and Lys-577, with Lys-449 being the major site. Sumoylation promotes recruitment of RAD51 to the DNA damage foci to initiate DNA repair through homologous recombination. Desumoylated by SENP6.
Cellular localization	Nucleus.

Images



All lanes : Anti-RPA70 antibody (ab97338) at 1/1000 dilution

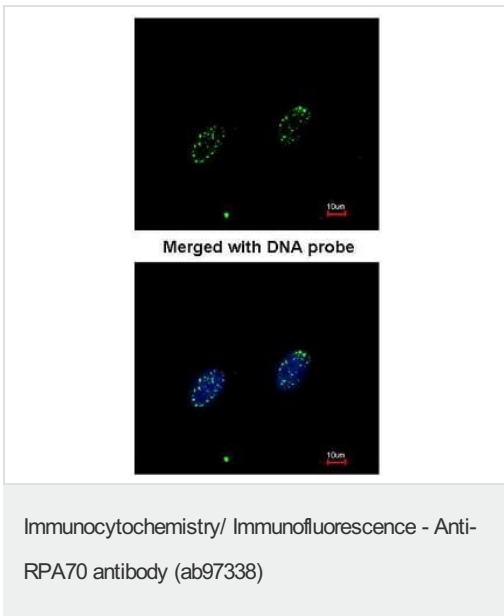
Lane 1 : H1299 whole cell lysate

Lane 2 : HeLaS3 whole cell lysate

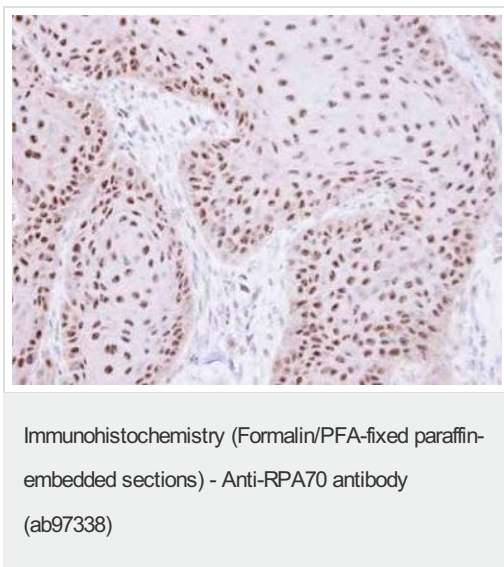
Lysates/proteins at 30 µg per lane.

Predicted band size: 68 kDa

7.5% SDS PAGE



Immunofluorescence analysis of paraformaldehyde-fixed HeLa, using RPA70 antibody (ab97338) at 1/200 dilution.



Immunohistochemical analysis of paraffin-embedded Cal27 xenograft, using RPA70 antibody (ab97338) at 1/100 dilution.

Please note: All products are "FOR RESEARCH USE ONLY. NOT FOR USE IN DIAGNOSTIC PROCEDURES"

Our Abpromise to you: Quality guaranteed and expert technical support

- Replacement or refund for products not performing as stated on the datasheet
- Valid for 12 months from date of delivery
- Response to your inquiry within 24 hours

- We provide support in Chinese, English, French, German, Japanese and Spanish
- Extensive multi-media technical resources to help you
- We investigate all quality concerns to ensure our products perform to the highest standards

If the product does not perform as described on this datasheet, we will offer a refund or replacement. For full details of the Abpromise, please visit <https://www.abcam.com/abpromise> or contact our technical team.

Terms and conditions

- Guarantee only valid for products bought direct from Abcam or one of our authorized distributors