

Product datasheet

Anti-RPE antibody ab238750

[2 Images](#)

Overview

Product name	Anti-RPE antibody
Description	Rabbit polyclonal to RPE
Host species	Rabbit
Tested applications	Suitable for: ICC/IF, IHC-P
Species reactivity	Reacts with: Human
Immunogen	Recombinant fragment corresponding to Human RPE aa 2-228. Database link: Q96AT9
Positive control	IHC-P: Human renal tissue. ICC/IF: HeLa cells.

Properties

Form	Liquid
Storage instructions	Shipped at 4°C. Store at +4°C short term (1-2 weeks). Upon delivery aliquot. Store at -20°C long term. Avoid freeze / thaw cycle.
Storage buffer	pH: 7.40 Preservative: 0.03% Proclin Constituents: PBS, 50% Glycerol
Purity	Protein G purified
Purification notes	Purity greater than 95%.
Clonality	Polyclonal
Isotype	IgG

Applications

Our [Abpromise guarantee](#) covers the use of **ab238750** in the following tested applications.

The application notes include recommended starting dilutions; optimal dilutions/concentrations should be determined by the end user.

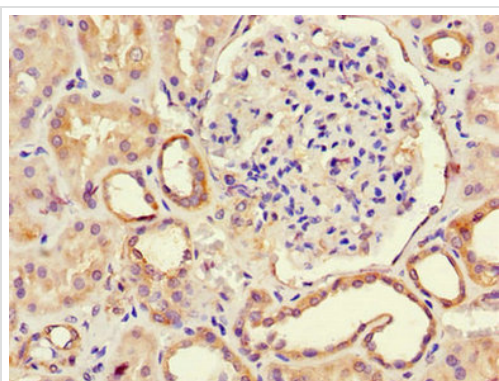
Application	Abreviews	Notes
ICC/IF		1/50 - 1/200.

Application	Abreviews	Notes
IHC-P		1/20 - 1/200.

Target

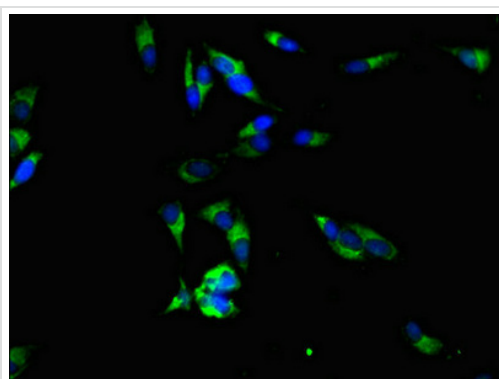
Function	Catalyzes the reversible epimerization of D-ribulose 5-phosphate to D-xylulose 5-phosphate.
Sequence similarities	Belongs to the ribulose-phosphate 3-epimerase family.

Images



Immunohistochemistry (Formalin/PFA-fixed paraffin-embedded sections) - Anti-RPE antibody (ab238750)

Paraffin-embedded human renal tissue stained for RPE using ab238750 at 1/100 dilution in immunohistochemical analysis.



Immunocytochemistry/ Immunofluorescence - Anti-RPE antibody (ab238750)

HeLa (Human epithelial cell line from cervix adenocarcinoma) cells stained for RPE (Green) using ab238750 at 1/100 dilution in ICC/IF, followed by an Alexa Fluor® 488-conjugated Goat Anti-Rabbit IgG (H+L) secondary antibody.

Please note: All products are "FOR RESEARCH USE ONLY. NOT FOR USE IN DIAGNOSTIC PROCEDURES"

Our Promise to you: Quality guaranteed and expert technical support

- Replacement or refund for products not performing as stated on the datasheet

- Valid for 12 months from date of delivery
- Response to your inquiry within 24 hours

- We provide support in Chinese, English, French, German, Japanese and Spanish
- Extensive multi-media technical resources to help you
- We investigate all quality concerns to ensure our products perform to the highest standards

If the product does not perform as described on this datasheet, we will offer a refund or replacement. For full details of the Abpromise, please visit <https://www.abcam.com/abpromise> or contact our technical team.

Terms and conditions

- Guarantee only valid for products bought direct from Abcam or one of our authorized distributors