

Product datasheet

Anti-RPE antibody [EPR7464] ab128891

Recombinant RabMAb[®]

1 Image

Overview

Product name	Anti-RPE antibody [EPR7464]
Description	Rabbit monoclonal [EPR7464] to RPE
Host species	Rabbit
Tested applications	Suitable for: WB, IP Unsuitable for: Flow Cyt, ICC or IHC-P
Species reactivity	Reacts with: Mouse, Rat, Human
Immunogen	Synthetic peptide within Human RPE aa 200-300 (C terminal). The exact sequence is proprietary.
Positive control	K562, HeLa, HepG2, and 293T cell lysates.
General notes	

Our RabMAb[®] technology is a patented hybridoma-based technology for making rabbit monoclonal antibodies. For details on our patents, please refer to [RabMAb[®] patents](#).

This product is a [recombinant rabbit monoclonal antibody](#).

Properties

Form	Liquid
Storage instructions	Shipped at 4°C. Store at -20°C. Stable for 12 months at -20°C.
Storage buffer	pH: 7.20 Preservative: 0.01% Sodium azide Constituents: 9% PBS, 40% Glycerol, 0.05% BSA, 50% Tissue culture supernatant
Purity	Tissue culture supernatant
Clonality	Monoclonal
Clone number	EPR7464
Isotype	IgG

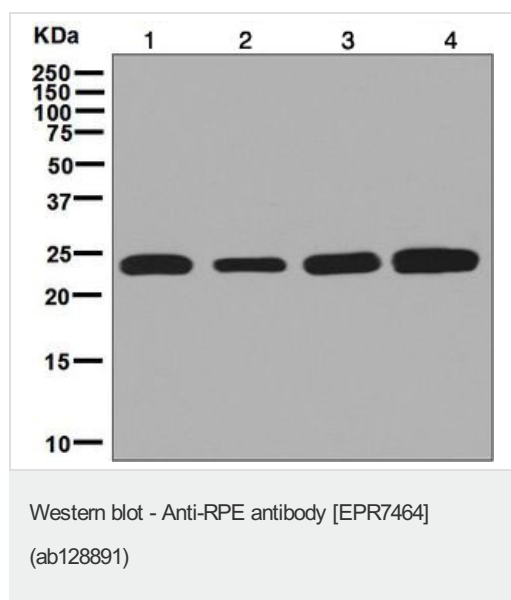
Applications

Our [Abpromise guarantee](#) covers the use of **ab128891** in the following tested applications.

The application notes include recommended starting dilutions; optimal dilutions/concentrations should be determined by the end user.

Application	Abreviews	Notes
WB		1/1000. Predicted molecular weight: 25 kDa.
IP		1/10 - 1/100.
Application notes		Is unsuitable for Flow Cyt, ICC or IHC-P.
Target		
Function		Catalyzes the reversible epimerization of D-ribulose 5-phosphate to D-xylulose 5-phosphate.
Sequence similarities		Belongs to the ribulose-phosphate 3-epimerase family.

Images



All lanes : Anti-RPE antibody [EPR7464] (ab128891) at 1/1000 dilution

Lane 1 : K562 cell lysate

Lane 2 : HeLa cell lysate

Lane 3 : HepG2 cell lysate

Lane 4 : 293T cell lysate

Lysates/proteins at 10 µg per lane.

Secondary

All lanes : HRP-conjugated goat anti-rabbit at 1/2000 dilution

Predicted band size: 25 kDa

Please note: All products are "FOR RESEARCH USE ONLY. NOT FOR USE IN DIAGNOSTIC PROCEDURES"

Our Abpromise to you: Quality guaranteed and expert technical support

- Replacement or refund for products not performing as stated on the datasheet
- Valid for 12 months from date of delivery
- Response to your inquiry within 24 hours
- We provide support in Chinese, English, French, German, Japanese and Spanish
- Extensive multi-media technical resources to help you

- We investigate all quality concerns to ensure our products perform to the highest standards

If the product does not perform as described on this datasheet, we will offer a refund or replacement. For full details of the Abpromise, please visit <https://www.abcam.com/abpromise> or contact our technical team.

Terms and conditions

- Guarantee only valid for products bought direct from Abcam or one of our authorized distributors