




Product datasheet

Anti-RPIA/PRI antibody ab229967

3 Images

Overview

Product name	Anti-RPIA/PRI antibody
Description	Rabbit polyclonal to RPIA/PRI
Host species	Rabbit
Tested applications	Suitable for: WB, IHC-P
Species reactivity	Reacts with: Mouse, Human Predicted to work with: Cow, Pig 
Immunogen	Recombinant fragment corresponding to Human RPIA/PRI aa 82-311. Sequence: KKLGRAAAVENHVRNNQVLGIGSGSTMHAVQRIAERVKQ ENLNLVCIPT SFQARQLILQYGLTSLDLRPEIDLAIIDGADEV DADLNLIK GGGCLTQE KVAGYASRFMIADFRKDSKNLGDQWHKGIPIEVIPMAYVP VSRAVSQK FGGVVELRMAVNKAGPVVTDNGNFILDWKFDRVHKWSE VNTAIKMIPGVV DTGLFINMAERVYFGMQDGSVNMREKPFPC Database link: P49247 <div style="float: right; margin-top: 10px;">  Run BLAST with  Run BLAST with </div>
Positive control	WB: Mouse kidney lysate. IHC-P: Human placenta and gastric cancer tissues.
General notes	This product was previously labelled as RPIA

Reproducibility is key to advancing scientific discovery and accelerating scientists' next breakthrough.

Abcam is leading the way with our range of recombinant antibodies, knockout-validated antibodies and knockout cell lines, all of which support improved reproducibility.

We are also planning to innovate the way in which we present recommended applications and species on our product datasheets, so that only applications & species that have been tested in our own labs, our suppliers or by selected trusted collaborators are covered by our Abpromise™ guarantee.

In preparation for this, we have started to update the applications & species that this product is

Abpromise guaranteed for.

We are also updating the applications & species that this product has been “predicted to work with,” however this information is not covered by our Abpromise guarantee.

Applications & species from publications and Abreviews that have not been tested in our own labs or in those of our suppliers are not covered by the Abpromise guarantee.

Please check that this product meets your needs before purchasing. If you have any questions, special requirements or concerns, please send us an inquiry and/or contact our Support team ahead of purchase. Recommended alternatives for this product can be found below, as well as customer reviews and Q&As.

Properties

Form	Liquid
Storage instructions	Shipped at 4°C. Store at +4°C short term (1-2 weeks). Upon delivery aliquot. Store at -20°C long term. Avoid freeze / thaw cycle.
Storage buffer	pH: 7.30 Preservative: 0.02% Sodium azide Constituents: PBS, 50% Glycerol (glycerin, glycerine)
Purity	Immunogen affinity purified
Clonality	Polyclonal
Isotype	IgG

Applications

Our [Abpromise guarantee](#) covers the use of **ab229967** in the following tested applications.

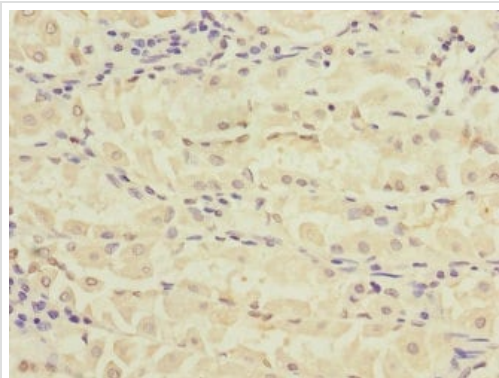
The application notes include recommended starting dilutions; optimal dilutions/concentrations should be determined by the end user.

Application	Abreviews	Notes
WB		1/1000 - 1/5000. Detects a band of approximately 33 kDa (predicted molecular weight: 33 kDa).
IHC-P		1/20 - 1/200.

Target

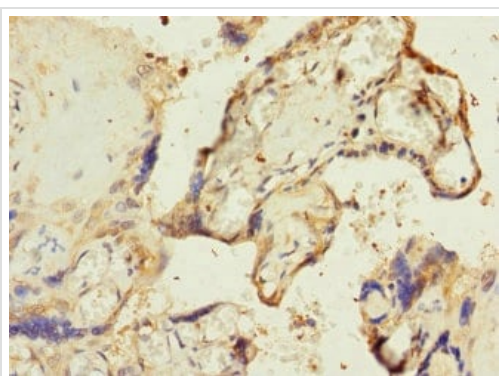
Pathway	Carbohydrate degradation; pentose phosphate pathway; D-ribose 5-phosphate from D-ribulose 5-phosphate (non-oxidative stage): step 1/1.
Involvement in disease	Defects in RPIA are the cause of ribose 5-phosphate isomerase deficiency (RPID) [MIM:608611]. A patient has been described with a deficiency of ribose 5-phosphate isomerase who presented with leukoencephalopathy and peripheral neuropathy. Proton magnetic resonance spectroscopy of the brain revealed a highly elevated level of the polyols ribitol and D-arabitol, which were subsequently also found in high concentrations in body fluids. Deficient activity of RPIA, one of the pentose phosphate pathway enzymes, has been demonstrated in fibroblasts.
Sequence similarities	Belongs to the ribose 5-phosphate isomerase family.

Images



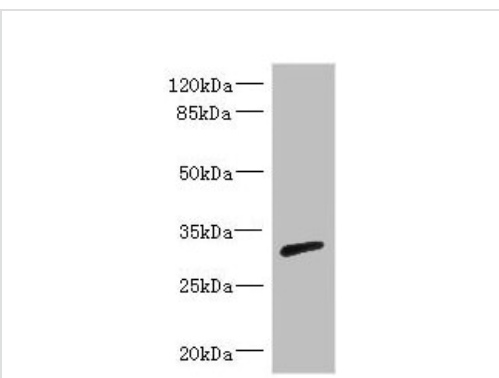
Immunohistochemistry (Formalin/PFA-fixed paraffin-embedded sections) - Anti-RPIA/PRI antibody (ab229967)

Paraffin-embedded human gastric cancer tissue stained for RPIA/PRI using ab229967 at 1/100 dilution in immunohistochemical analysis.



Immunohistochemistry (Formalin/PFA-fixed paraffin-embedded sections) - Anti-RPIA/PRI antibody (ab229967)

Paraffin-embedded human placenta tissue stained for RPIA/PRI using ab229967 at 1/100 dilution in immunohistochemical analysis.



Western blot - Anti-RPIA/PRI antibody (ab229967)

Anti-RPIA/PRI antibody (ab229967) at 1/1000 dilution + Mouse kidney tissue

Secondary

Goat polyclonal to rabbit IgG at 1/10000 dilution

Predicted band size: 33 kDa

Observed band size: 33 kDa

Our Abpromise to you: Quality guaranteed and expert technical support

- Replacement or refund for products not performing as stated on the datasheet
- Valid for 12 months from date of delivery
- Response to your inquiry within 24 hours

- We provide support in Chinese, English, French, German, Japanese and Spanish
- Extensive multi-media technical resources to help you
- We investigate all quality concerns to ensure our products perform to the highest standards

If the product does not perform as described on this datasheet, we will offer a refund or replacement. For full details of the Abpromise, please visit <https://www.abcam.com/abpromise> or contact our technical team.

Terms and conditions

- Guarantee only valid for products bought direct from Abcam or one of our authorized distributors