


Product datasheet

Anti-RPL13A antibody ab96074

★★★★☆ 4 Abreviews 2 Images

Overview

Product name	Anti-RPL13A antibody
Description	Rabbit polyclonal to RPL13A
Host species	Rabbit
Tested applications	Suitable for: WB, ICC/IF
Species reactivity	Reacts with: Human, Pig Predicted to work with: Mouse, Rat, Cow, Zebrafish 
Immunogen	Recombinant fragment, corresponding to a region within amino acids 1-197 of Human RPL13A (NP_036555).
General notes	<p>Reproducibility is key to advancing scientific discovery and accelerating scientists' next breakthrough.</p> <p>Abcam is leading the way with our range of recombinant antibodies, knockout-validated antibodies and knockout cell lines, all of which support improved reproducibility.</p> <p>We are also planning to innovate the way in which we present recommended applications and species on our product datasheets, so that only applications & species that have been tested in our own labs, our suppliers or by selected trusted collaborators are covered by our Abpromise™ guarantee.</p> <p>In preparation for this, we have started to update the applications & species that this product is Abpromise guaranteed for.</p> <p>We are also updating the applications & species that this product has been “predicted to work with,” however this information is not covered by our Abpromise guarantee.</p> <p>Applications & species from publications and Abreviews that have not been tested in our own labs or in those of our suppliers are not covered by the Abpromise guarantee.</p> <p>Please check that this product meets your needs before purchasing. If you have any questions, special requirements or concerns, please send us an inquiry and/or contact our Support team ahead of purchase. Recommended alternatives for this product can be found below, as well as customer reviews and Q&As.</p>

Properties

Form	Liquid
Storage instructions	Shipped at 4°C. Upon delivery aliquot and store at -20°C or -80°C. Avoid repeated freeze / thaw

	cycles.
Storage buffer	pH: 7.00 Preservative: 0.01% Thimerosal (merthiolate) Constituents: 1.21% Tris, 0.75% Glycine, 10% Glycerol (glycerin, glycerine)
Purity	Immunogen affinity purified
Clonality	Polyclonal
Isotype	IgG

Applications

Our [Abpromise guarantee](#) covers the use of **ab96074** in the following tested applications.

The application notes include recommended starting dilutions; optimal dilutions/concentrations should be determined by the end user.

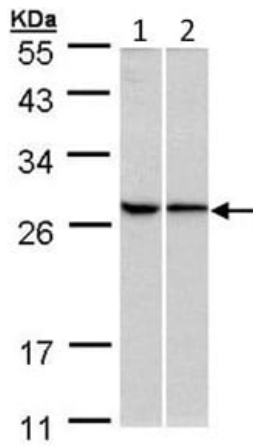
Application	Abreviews	Notes
WB	★★★★☆	1/500 - 1/3000. Predicted molecular weight: 24 kDa.
ICC/IF	★★★★☆	1/100 - 1/200.

Target

Relevance

Ribosomes, the organelles that catalyze protein synthesis, consist of a small 40S subunit and a large 60S subunit. Together these subunits are composed of 4 RNA species and approximately 80 structurally distinct proteins. This gene encodes a ribosomal protein that is a component of the 60S subunit. The protein belongs to the L13P family of ribosomal proteins. It is located in the cytoplasm. Transcript variants utilizing alternative polyA signals have been observed. This gene is co-transcribed with the small nucleolar RNA genes U32, U33, U34, and U35, which are located in its second, fourth, fifth, and sixth introns, respectively. As is typical for genes encoding ribosomal proteins, there are multiple processed pseudogenes of this gene dispersed through the genome.

Images



Western blot - Anti-RPL13A antibody (ab96074)

All lanes : Anti-RPL13A antibody (ab96074) at 1/500 dilution

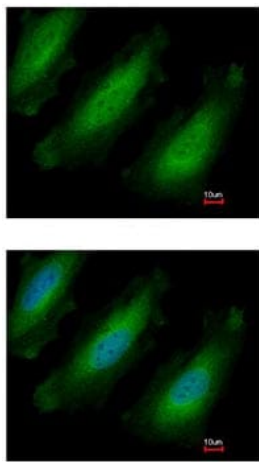
Lane 1 : 293T whole cell lysate

Lane 2 : HeLa whole cell lysate

Lysates/proteins at 30 µg per lane.

Predicted band size: 24 kDa

10% SDS PAGE



Immunocytochemistry/ Immunofluorescence - Anti-RPL13A antibody (ab96074)

Immunofluorescence analysis of paraformaldehyde-fixed HeLa cells, using ab96074 at 1/200 dilution. Lower image is merged with DNA probe.

Please note: All products are "FOR RESEARCH USE ONLY. NOT FOR USE IN DIAGNOSTIC PROCEDURES"

Our Abpromise to you: Quality guaranteed and expert technical support

- Replacement or refund for products not performing as stated on the datasheet
- Valid for 12 months from date of delivery
- Response to your inquiry within 24 hours
- We provide support in Chinese, English, French, German, Japanese and Spanish
- Extensive multi-media technical resources to help you
- We investigate all quality concerns to ensure our products perform to the highest standards

If the product does not perform as described on this datasheet, we will offer a refund or replacement. For full details of the Abpromise, please visit <https://www.abcam.com/abpromise> or contact our technical team.

Terms and conditions

- Guarantee only valid for products bought direct from Abcam or one of our authorized distributors