




Product datasheet

Anti-RPL19 antibody ab224592

4 Images

Overview

<b>Product name</b>	Anti-RPL19 antibody
<b>Description</b>	Rabbit polyclonal to RPL19
<b>Host species</b>	Rabbit
<b>Tested applications</b>	<b>Suitable for:</b> IHC-P, ICC/IF, WB
<b>Species reactivity</b>	<b>Reacts with:</b> Mouse, Human <b>Predicted to work with:</b> Rat, Cow, Dog, Xenopus laevis, Zebrafish, Cynomolgus monkey, Catfish, Orangutan 
<b>Immunogen</b>	Recombinant fragment corresponding to Human RPL19 aa 79-196. Sequence:  GKRKGTANARMPEKV TWMRRMRILRLLRRYRESKKIDRH MYHSLYLKVK GNVFKNRILMEHIIHKLKADKARKKLLADQAEARRSKTKE ARKRREERLQ AKKEEIIKLSKEEETKK  Database link: <a href="#">P84098</a>   <a href="#">Run BLAST with</a>  <a href="#">Run BLAST with</a>
<b>Positive control</b>	WB: Mouse spleen tissue lysate. IHC: Human tonsil and endometrial cancer tissue. ICC/IF: HeLa cells.
<b>General notes</b>	<p>Reproducibility is key to advancing scientific discovery and accelerating scientists' next breakthrough.</p> <p>Abcam is leading the way with our range of recombinant antibodies, knockout-validated antibodies and knockout cell lines, all of which support improved reproducibility.</p> <p>We are also planning to innovate the way in which we present recommended applications and species on our product datasheets, so that only applications &amp; species that have been tested in our own labs, our suppliers or by selected trusted collaborators are covered by our Abpromise™ guarantee.</p> <p>In preparation for this, we have started to update the applications &amp; species that this product is Abpromise guaranteed for.</p> <p>We are also updating the applications &amp; species that this product has been “predicted to work with,” however this information is not covered by our Abpromise guarantee.</p> <p>Applications &amp; species from publications and Abreviews that have not been tested in our own labs or in those of our suppliers are not covered by the Abpromise guarantee.</p>

Please check that this product meets your needs before purchasing. If you have any questions, special requirements or concerns, please send us an inquiry and/or contact our Support team ahead of purchase. Recommended alternatives for this product can be found below, as well as customer reviews and Q&As.

## Properties

---

<b>Form</b>	Liquid
<b>Storage instructions</b>	Shipped at 4°C. Store at +4°C short term (1-2 weeks). Upon delivery aliquot. Store at -20°C long term. Avoid freeze / thaw cycle.
<b>Storage buffer</b>	pH: 7.40 Constituents: 50% Glycerol, PBS, 0.03% Proclin 300
<b>Purity</b>	Protein G purified
<b>Clonality</b>	Polyclonal
<b>Isotype</b>	IgG

## Applications

---

Our [Abpromise guarantee](#) covers the use of **ab224592** in the following tested applications.

The application notes include recommended starting dilutions; optimal dilutions/concentrations should be determined by the end user.

Application	Abreviews	Notes
IHC-P		1/20 - 1/200.
ICC/IF		1/50 - 1/200.
WB		1/500 - 1/5000.

## Target

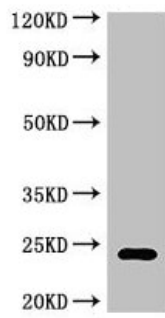
---

**Sequence similarities** Belongs to the ribosomal protein L19e family.

---

## Images

---



Western blot - Anti-RPL19 antibody (ab224592)

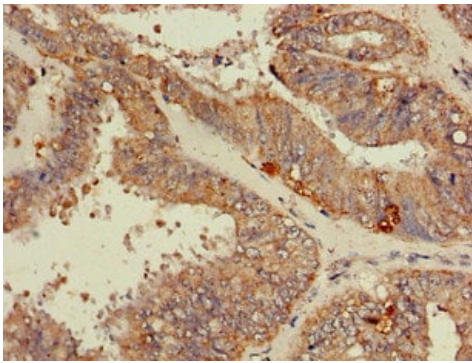
Anti-RPL19 antibody (ab224592) at 1/500 dilution + Mouse spleen tissue lysate

### Secondary

Goat polyclonal to rabbit IgG at 1/50000 dilution

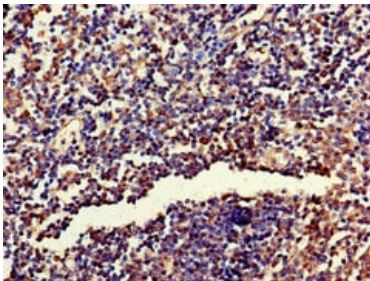
**Observed band size:** 24 kDa

[why is the actual band size different from the predicted?](#)



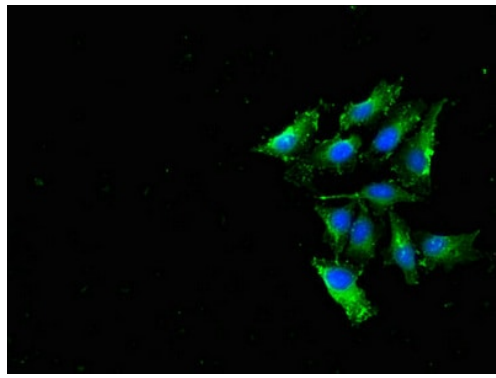
Immunohistochemistry (Formalin/PFA-fixed paraffin-embedded sections) - Anti-RPL19 antibody (ab224592)

Paraffin-embedded human endometrial cancer tissue stained for RPL19 using ab224592 at 1/100 dilution in immunohistochemical analysis.



Immunohistochemistry (Formalin/PFA-fixed paraffin-embedded sections) - Anti-RPL19 antibody (ab224592)

Paraffin-embedded human tonsil tissue stained for RPL19 using ab224592 at 1/100 dilution in immunohistochemical analysis.



Immunocytochemistry/ Immunofluorescence - Anti-RPL19 antibody (ab224592)

HeLa (human epithelial cell line from cervix adenocarcinoma) cells stained for RPL19 (green) using ab224592 at 1/100 dilution in ICC/IF.

**Please note:** All products are "FOR RESEARCH USE ONLY. NOT FOR USE IN DIAGNOSTIC PROCEDURES"

### Our Abpromise to you: Quality guaranteed and expert technical support

---

- Replacement or refund for products not performing as stated on the datasheet
- Valid for 12 months from date of delivery
- Response to your inquiry within 24 hours
- We provide support in Chinese, English, French, German, Japanese and Spanish
- Extensive multi-media technical resources to help you
- We investigate all quality concerns to ensure our products perform to the highest standards

If the product does not perform as described on this datasheet, we will offer a refund or replacement. For full details of the Abpromise, please visit <https://www.abcam.com/abpromise> or contact our technical team.

### Terms and conditions

---

- Guarantee only valid for products bought direct from Abcam or one of our authorized distributors