


Product datasheet

Anti-RPL27A antibody ab74731

★★★★☆ 4 Abreviews 3 References 2 Images

Overview

| | |
|----------------------------|--|
| Product name | Anti-RPL27A antibody |
| Description | Rabbit polyclonal to RPL27A |
| Host species | Rabbit |
| Specificity | ab74731 detects endogenous levels of total RPL27A protein. |
| Tested applications | Suitable for: WB, ELISA, ICC/IF |
| Species reactivity | Reacts with: Mouse, Human Predicted to work with: Rat  |
| Immunogen | synthesized peptide derived from C-terminal region of human RPL27A. |
| Positive control | extracts from COLO cells and A549 cells |

Properties

| | |
|-----------------------------|--|
| Form | Liquid |
| Storage instructions | Shipped at 4°C. Upon delivery aliquot and store at -20°C. Avoid freeze / thaw cycles. |
| Storage buffer | pH: 7.40 Preservative: 0.02% Sodium azide Constituents: 50% Glycerol, 0.87% Sodium chloride, PBS |
| | Without Mg ²⁺ and Ca ²⁺ |
| Purity | Immunogen affinity purified |
| Clonality | Polyclonal |
| Isotype | IgG |

Applications

Our [Abpromise guarantee](#) covers the use of **ab74731** in the following tested applications.

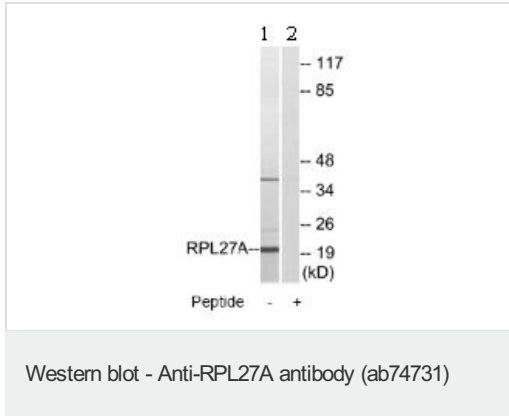
The application notes include recommended starting dilutions; optimal dilutions/concentrations should be determined by the end user.

| Application | Abreviews | Notes |
|-------------|-----------|---|
| WB | ★★★★☆ | 1/500 - 1/1000. Predicted molecular weight: 17 kDa. |
| ELISA | | 1/40000. |
| ICC/IF | ★★☆☆☆ | 1/500 - 1/1000. |

Target

Sequence similarities Belongs to the ribosomal protein L15P family.

Images



All lanes : Anti-RPL27A antibody (ab74731) at 1/500 dilution

Lane 1 : extracts from COLO cells

Lane 2 : extracts from COLO cells with immunising peptide at 10 µg

Lysates/proteins at 30 µg per lane.

Predicted band size: 17 kDa

Observed band size: 19 kDa

[why is the actual band size different from the predicted?](#)

Additional bands at: 38 kDa. We are unsure as to the identity of these extra bands.



Immunofluorescence analysis of A549 cells, using ab74731 at 1/500 dilution with (+) or without (-) immunising peptide.

Please note: All products are "FOR RESEARCH USE ONLY. NOT FOR USE IN DIAGNOSTIC PROCEDURES"

Our Abpromise to you: Quality guaranteed and expert technical support

- Replacement or refund for products not performing as stated on the datasheet
- Valid for 12 months from date of delivery
- Response to your inquiry within 24 hours

- We provide support in Chinese, English, French, German, Japanese and Spanish
- Extensive multi-media technical resources to help you
- We investigate all quality concerns to ensure our products perform to the highest standards

If the product does not perform as described on this datasheet, we will offer a refund or replacement. For full details of the Abpromise, please visit <https://www.abcam.com/abpromise> or contact our technical team.

Terms and conditions

- Guarantee only valid for products bought direct from Abcam or one of our authorized distributors