


Product datasheet

Anti-RPL3 antibody ab228638

5 Images

Overview

<b>Product name</b>	Anti-RPL3 antibody
<b>Description</b>	Rabbit polyclonal to RPL3
<b>Host species</b>	Rabbit
<b>Tested applications</b>	<b>Suitable for:</b> WB, IHC-P, ICC/IF
<b>Species reactivity</b>	<b>Reacts with:</b> Mouse, Human <b>Predicted to work with:</b> Rat, Chicken, Guinea pig, Cow, Dog, Xenopus laevis, Chimpanzee, Zebrafish, Rhesus monkey 
<b>Immunogen</b>	Recombinant fragment within Human RPL3 (internal sequence). The exact sequence is proprietary. Database link: <a href="#">P39023</a>
<b>Positive control</b>	WB: Jurkat and Raji whole cell lysates. IHC-P: Mouse intestine and brain tissue; 4T1 xenograft tissue. ICC/IF: A431 cells.

Properties

<b>Form</b>	Liquid
<b>Storage instructions</b>	Shipped at 4°C. Store at +4°C short term (1-2 weeks). Upon delivery aliquot. Store at -20°C long term. Avoid freeze / thaw cycle.
<b>Storage buffer</b>	pH: 7.00 Preservative: 0.01% Thimerosal (merthiolate) Constituents: 1.21% Tris, 0.75% Glycine, 20% Glycerol
<b>Purity</b>	Immunogen affinity purified
<b>Clonality</b>	Polyclonal
<b>Isotype</b>	IgG

Applications

Our [Abpromise guarantee](#) covers the use of **ab228638** in the following tested applications.

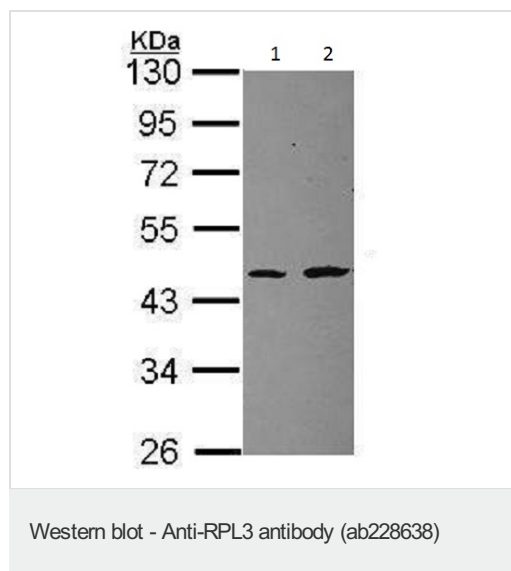
The application notes include recommended starting dilutions; optimal dilutions/concentrations should be determined by the end user.

Application	Abreviews	Notes
WB		1/500 - 1/3000. Predicted molecular weight: 46 kDa.
IHC-P		1/100 - 1/1000.
ICC/IF		1/100 - 1/1000.

## Target

<b>Function</b>	The L3 protein is a component of the large subunit of cytoplasmic ribosomes.
<b>Sequence similarities</b>	Belongs to the ribosomal protein L3P family.
<b>Cellular localization</b>	Cytoplasm.

## Images



**All lanes :** Anti-RPL3 antibody (ab228638) at 1/1000 dilution

**Lane 1 :** Jurkat (human T cell leukemia cell line from peripheral blood) whole cell lysate

**Lane 2 :** Raji (human Burkitt's lymphoma cell line) whole cell lysate

Lysates/proteins at 30 µg per lane.

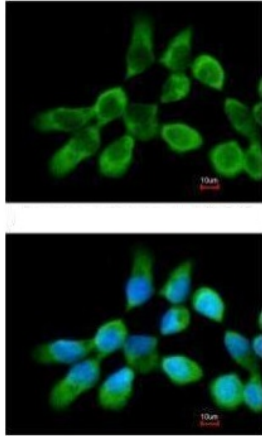
### Secondary

**All lanes :** HRP-conjugated anti-rabbit IgG

Developed using the ECL technique.

**Predicted band size:** 46 kDa

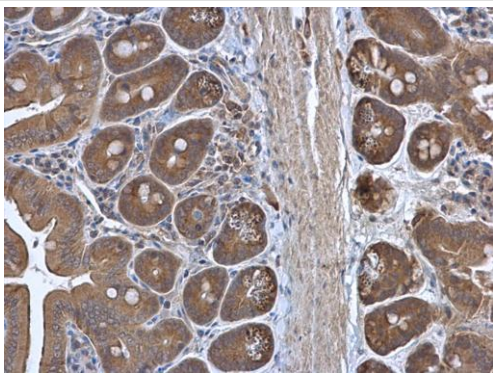
10% SDS-PAGE



Immunocytochemistry/ Immunofluorescence - Anti-RPL3 antibody (ab228638)

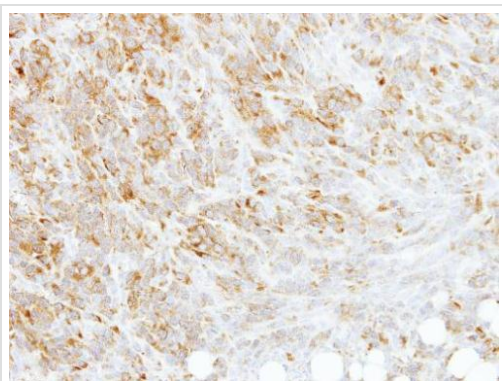
Methanol-fixed A431 (human epidermoid carcinoma cell line) cells stained for RPL3 (green) using ab228638 at 1/200 dilution in ICC/IF.

Nuclear counterstain: Hoechst 33342.



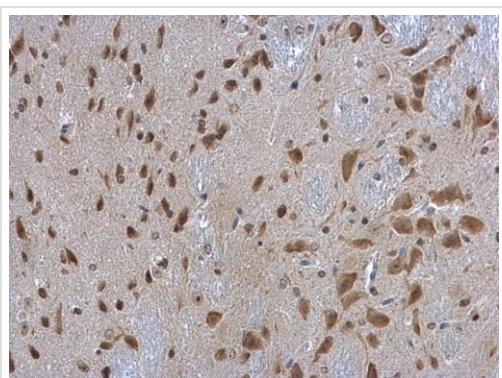
Immunohistochemistry (Formalin/PFA-fixed paraffin-embedded sections) - Anti-RPL3 antibody (ab228638)

Paraffin-embedded mouse intestine tissue stained for RPL3 with ab228638 at 1/500 dilution in immunohistochemical analysis.



Paraffin-embedded 4T1 xenograft tissue stained for RPL3 with ab228638 at 1/500 dilution in immunohistochemical analysis.

Immunohistochemistry (Formalin/PFA-fixed paraffin-embedded sections) - Anti-RPL3 antibody (ab228638)



Paraffin-embedded mouse brain tissue stained for RPL3 with ab228638 at 1/500 dilution in immunohistochemical analysis.

Immunohistochemistry (Formalin/PFA-fixed paraffin-embedded sections) - Anti-RPL3 antibody (ab228638)

**Please note:** All products are "FOR RESEARCH USE ONLY. NOT FOR USE IN DIAGNOSTIC PROCEDURES"

#### **Our Abpromise to you: Quality guaranteed and expert technical support**

---

- Replacement or refund for products not performing as stated on the datasheet
- Valid for 12 months from date of delivery
- Response to your inquiry within 24 hours
- We provide support in Chinese, English, French, German, Japanese and Spanish

- Extensive multi-media technical resources to help you
- We investigate all quality concerns to ensure our products perform to the highest standards

If the product does not perform as described on this datasheet, we will offer a refund or replacement. For full details of the Abpromise, please visit <https://www.abcam.com/abpromise> or contact our technical team.

### **Terms and conditions**

---

- Guarantee only valid for products bought direct from Abcam or one of our authorized distributors