




Product datasheet

Anti-RPL32 antibody ab229758

1 References 4 Images

Overview

<b>Product name</b>	Anti-RPL32 antibody
<b>Description</b>	Rabbit polyclonal to RPL32
<b>Host species</b>	Rabbit
<b>Tested applications</b>	<b>Suitable for:</b> WB, ICC/IF, IHC-P
<b>Species reactivity</b>	<b>Reacts with:</b> Human <b>Predicted to work with:</b> Mouse, Rat, Rabbit, Chicken, Cow, Dog, Pig, Xenopus laevis, Zebrafish, Rhesus monkey 
<b>Immunogen</b>	Recombinant full length protein corresponding to Human RPL32 aa 1-135. Sequence:  MAALRPLVKPKIVKKRTKKFIRHQSDRYVKIKRNWRKPRGI DNRVRRRFK GQILMPNIGYGSNKKTKHMLPSGFRKFLVHNVKELEVLLM CNKSYCAEIA HNVSSKNRKAIVERAAQLAIRVTNPARNLRSEENE  Database link: <a href="#">P62910</a>   <a href="#">Run BLAST with</a>  <a href="#">Run BLAST with</a>
<b>Positive control</b>	WB: HEK-293T, A431, HeLa and HepG2 whole cell extracts. IHC-P: Human lung cancer and colon cancer tissue. ICC/IF: MCF7 cells.
<b>General notes</b>	<p>Reproducibility is key to advancing scientific discovery and accelerating scientists' next breakthrough.</p> <p>Abcam is leading the way with our range of recombinant antibodies, knockout-validated antibodies and knockout cell lines, all of which support improved reproducibility.</p> <p>We are also planning to innovate the way in which we present recommended applications and species on our product datasheets, so that only applications &amp; species that have been tested in our own labs, our suppliers or by selected trusted collaborators are covered by our Abpromise™ guarantee.</p> <p>In preparation for this, we have started to update the applications &amp; species that this product is Abpromise guaranteed for.</p> <p>We are also updating the applications &amp; species that this product has been “predicted to work with,” however this information is not covered by our Abpromise guarantee.</p> <p>Applications &amp; species from publications and Abreviews that have not been tested in our own</p>

labs or in those of our suppliers are not covered by the Abpromise guarantee.

Please check that this product meets your needs before purchasing. If you have any questions, special requirements or concerns, please send us an inquiry and/or contact our Support team ahead of purchase. Recommended alternatives for this product can be found below, as well as customer reviews and Q&As.

## Properties

---

<b>Form</b>	Liquid
<b>Storage instructions</b>	Shipped at 4°C. Store at +4°C short term (1-2 weeks). Upon delivery aliquot. Store at -20°C long term. Avoid freeze / thaw cycle.
<b>Storage buffer</b>	pH: 7.00 Preservative: 0.025% Proclin 300 Constituents: 79% PBS, 20% Glycerol (glycerin, glycerine)
<b>Purity</b>	Immunogen affinity purified
<b>Clonality</b>	Polyclonal
<b>Isotype</b>	IgG

## Applications

---

Our [Abpromise guarantee](#) covers the use of **ab229758** in the following tested applications.

The application notes include recommended starting dilutions; optimal dilutions/concentrations should be determined by the end user.

Application	Abreviews	Notes
WB		1/500 - 1/3000. Predicted molecular weight: 16 kDa.
ICC/IF		1/100 - 1/1000.
IHC-P		1/100 - 1/1000.

## Target

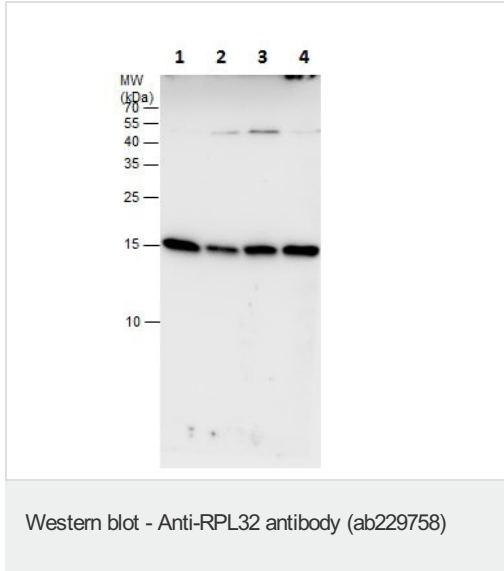
---

**Sequence similarities** Belongs to the ribosomal protein L32e family.

---

## Images

---



**All lanes :** Anti-RPL32 antibody (ab229758) at 1/1000 dilution

**Lane 1 :** HEK-293T (human epithelial cell line from embryonic kidney transformed with large T antigen) whole cell extract

**Lane 2 :** A431 (human epidermoid carcinoma cell line) whole cell extract

**Lane 3 :** HeLa (human epithelial cell line from cervix adenocarcinoma) whole cell extract

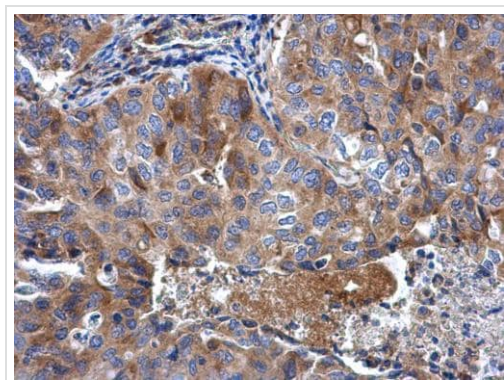
**Lane 4 :** HepG2 (human liver hepatocellular carcinoma cell line) whole cell extract

Lysates/proteins at 30 µg per lane.

Developed using the ECL technique.

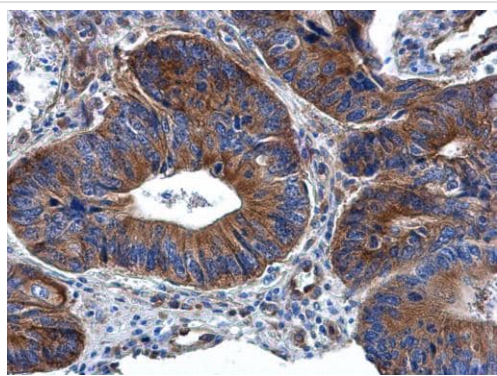
**Predicted band size:** 16 kDa

15% SDS-PAGE gel.



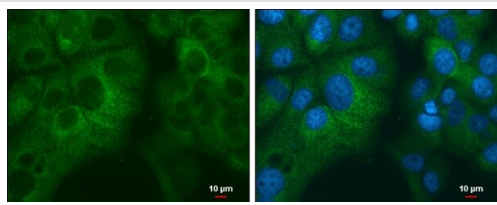
Paraffin-embedded human lung cancer tissue stained for RPL32 with ab229758 at 1/500 dilution in immunohistochemical analysis.

Immunohistochemistry (Formalin/PFA-fixed paraffin-embedded sections) - Anti-RPL32 antibody (ab229758)



Immunohistochemistry (Formalin/PFA-fixed paraffin-embedded sections) - Anti-RPL32 antibody (ab229758)

Paraffin-embedded human colon cancer tissue stained for RPL32 with ab229758 at 1/500 dilution in immunohistochemical analysis.



Immunocytochemistry/ Immunofluorescence - Anti-RPL32 antibody (ab229758)

4% paraformaldehyde-fixed MCF7 (human breast adenocarcinoma cell line) cells stained for RPL32 (green) using ab229758 at 1/1000 dilution in ICC/IF.

Nuclear counterstain: Hoechst 33342 (blue).

**Please note:** All products are "FOR RESEARCH USE ONLY. NOT FOR USE IN DIAGNOSTIC PROCEDURES"

### Our Abpromise to you: Quality guaranteed and expert technical support

---

- Replacement or refund for products not performing as stated on the datasheet
- Valid for 12 months from date of delivery
- Response to your inquiry within 24 hours
- We provide support in Chinese, English, French, German, Japanese and Spanish
- Extensive multi-media technical resources to help you
- We investigate all quality concerns to ensure our products perform to the highest standards

If the product does not perform as described on this datasheet, we will offer a refund or replacement. For full details of the Abpromise, please visit <https://www.abcam.com/abpromise> or contact our technical team.

### Terms and conditions

---

- Guarantee only valid for products bought direct from Abcam or one of our authorized distributors