


Product datasheet

Anti-RPL37 antibody ab128668

1 Image

Overview

Product name	Anti-RPL37 antibody
Description	Rabbit polyclonal to RPL37
Host species	Rabbit
Tested applications	Suitable for: WB
Species reactivity	Reacts with: Mouse Predicted to work with: Rat, Rabbit, Horse, Chicken, Cow, Cat, Dog, Human, Pig, Zebrafish 
Immunogen	Synthetic peptide corresponding to a region within internal sequence amino acids 47-96 (YNWSAKAKRR NTTGTGRMRH LKIVYRRFRH GFREGTTPKP KRAAVAASSS) of Mouse RPL37 (NP_080345). Run BLAST with ExPASy Run BLAST with NCBI
Positive control	Mouse pancreas lysate

Properties

Form	Liquid
Storage instructions	Shipped at 4°C. Upon delivery aliquot and store at -20°C. Avoid repeated freeze / thaw cycles.
Storage buffer	Preservative: 0.09% Sodium azide Constituents: 2% Sucrose, PBS
Purity	Immunogen affinity purified
Clonality	Polyclonal
Isotype	IgG

Applications

Our [Abpromise guarantee](#) covers the use of **ab128668** in the following tested applications.

The application notes include recommended starting dilutions; optimal dilutions/concentrations should be determined by the end user.

Application	Abreviews	Notes

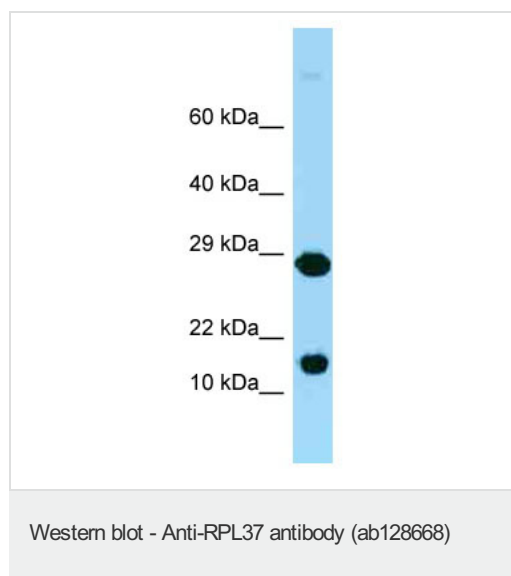
Application	Abreviews	Notes
WB		Use a concentration of 1 µg/ml. Predicted molecular weight: 11 kDa. Good results were obtained when blocked with 5% non-fat dry milk in 0.05% PBS-T.

Target

Relevance Ribosomes, the organelles that catalyze protein synthesis, consist of a small 40S subunit and a large 60S subunit. Together these subunits are composed of four RNA species and approximately 80 structurally distinct proteins. RPL37 is a ribosomal protein that is a component of the 60S subunit. The protein belongs to the L37E family of ribosomal proteins, is located in the cytoplasm, and contains a C2C2 type zinc finger like motif.

Cellular localization Cytoplasmic (ribosome)

Images



Anti-RPL37 antibody (ab128668) at 1 µg/ml + Mouse pancreas lysate at 10 µg

Predicted band size: 11 kDa

Gel concentration: 10-20%.

Please note: All products are "FOR RESEARCH USE ONLY. NOT FOR USE IN DIAGNOSTIC PROCEDURES"

Our Abpromise to you: Quality guaranteed and expert technical support

- Replacement or refund for products not performing as stated on the datasheet
- Valid for 12 months from date of delivery
- Response to your inquiry within 24 hours
- We provide support in Chinese, English, French, German, Japanese and Spanish
- Extensive multi-media technical resources to help you
- We investigate all quality concerns to ensure our products perform to the highest standards

If the product does not perform as described on this datasheet, we will offer a refund or replacement. For full details of the Abpromise, please visit <https://www.abcam.com/abpromise> or contact our technical team.

Terms and conditions

- Guarantee only valid for products bought direct from Abcam or one of our authorized distributors