


Product datasheet

Anti-RPL39 antibody ab74740

1 References 2 Images

Overview

Product name	Anti-RPL39 antibody
Description	Rabbit polyclonal to RPL39
Host species	Rabbit
Specificity	ab74740 detects endogenous levels of total RPL39 protein.
Tested applications	Suitable for: WB, ELISA, ICC/IF
Species reactivity	Reacts with: Human Predicted to work with: Mouse, Rat 
Immunogen	Synthetic peptide derived from an internal sequence of human RPL39.
Positive control	WB: HepG2 and COLO cell extracts ICC/IF: A549 cells

Properties

Form	Liquid
Storage instructions	Shipped at 4°C. Upon delivery aliquot and store at -20°C. Avoid freeze / thaw cycles.
Storage buffer	pH: 7.40 Preservative: 0.02% Sodium azide Constituents: 50% Glycerol, 0.87% Sodium chloride, PBS
	Without Mg ²⁺ and Ca ²⁺
Purity	Immunogen affinity purified
Purification notes	ab74740 was affinity purified from rabbit antiserum by affinity chromatography using epitope specific immunogen.
Clonality	Polyclonal
Isotype	IgG

Applications

Our [Abpromise guarantee](#) covers the use of **ab74740** in the following tested applications.

The application notes include recommended starting dilutions; optimal dilutions/concentrations should be determined by the end user.

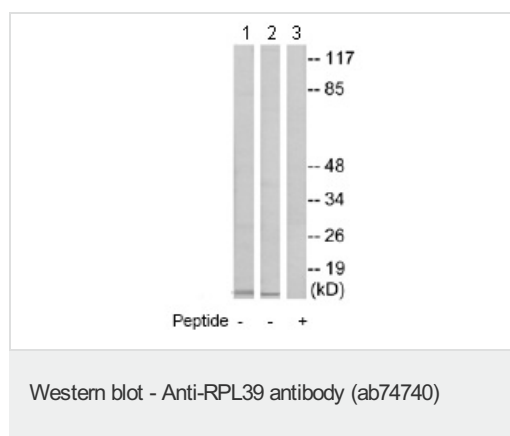
Application	Abreviews	Notes
WB		1/500 - 1/1000. Predicted molecular weight: 7 kDa.
ELISA		1/60000.
ICC/IF		1/500 - 1/1000.

Target

Relevance

RPL39 is a ribosomal protein that is a component of the 60S subunit. The protein belongs to the S39E family of ribosomal proteins. It is located in the cytoplasm. In rat, the protein is the smallest, and one of the most basic, proteins of the ribosome. This gene is cotranscribed with the U69 small nucleolar RNA gene, which is located in its second intron. As is typical for genes encoding ribosomal proteins, there are multiple processed pseudogenes of this gene dispersed through the genome.

Images



All lanes : Anti-RPL39 antibody (ab74740) at 1/500 dilution

Lane 1 : HepG2 cell extracts

Lane 2 : COLO cell extracts

Lane 3 : COLO cell extracts with immunising peptide at 10 µg

Lysates/proteins at 30 µg per lane.

Predicted band size: 7 kDa

Observed band size: 7 kDa



ab74740 at 1/500 dilution staining RPL39 in A549 cells by Immunofluorescence, in the absence or presence of the immunising peptide.

Please note: All products are "FOR RESEARCH USE ONLY. NOT FOR USE IN DIAGNOSTIC PROCEDURES"

Our Abpromise to you: Quality guaranteed and expert technical support

- Replacement or refund for products not performing as stated on the datasheet
- Valid for 12 months from date of delivery
- Response to your inquiry within 24 hours

- We provide support in Chinese, English, French, German, Japanese and Spanish
- Extensive multi-media technical resources to help you
- We investigate all quality concerns to ensure our products perform to the highest standards

If the product does not perform as described on this datasheet, we will offer a refund or replacement. For full details of the Abpromise, please visit <https://www.abcam.com/abpromise> or contact our technical team.

Terms and conditions

- Guarantee only valid for products bought direct from Abcam or one of our authorized distributors