

Product datasheet

Anti-RPL3L antibody ab129753

[2 Images](#)

Overview

Product name	Anti-RPL3L antibody
Description	Rabbit polyclonal to RPL3L
Host species	Rabbit

Tested Applications & Species

Application	Species
ICC/IF	Human
IHC-P	Human

[See all applications and species data](#) ↓

Immunogen	Synthetic peptide derived from internal sequence of Human RPL3L (UniProt Q92901).
Positive control	Human heart tissue; MCF-7 cells.

Properties

Form	Liquid
Storage instructions	Shipped at 4°C. Store at -20°C. Stable for 12 months at -20°C.
Storage buffer	pH: 7 Preservative: 0.02% Sodium azide Constituents: 49% PBS, 50% Glycerol (glycerin, glycerine), 0.88% Sodium chloride
Purity	Immunogen affinity purified
Clonality	Polyclonal
Isotype	IgG

Applications

The Abpromise guarantee Our [Abpromise guarantee](#) covers the use of **ab129753** in the following tested applications. The application notes include recommended starting dilutions; optimal dilutions/concentrations should be determined by the end user.

Guaranteed

Tested applications are guaranteed to work and covered by our Abpromise guarantee.

Predicted

Predicted to work for this combination of applications and species but not guaranteed.

Incompatible

Does not work for this combination of applications and species.

Application	Species
ICC/IF	✔ Human
IHC-P	✔ Human

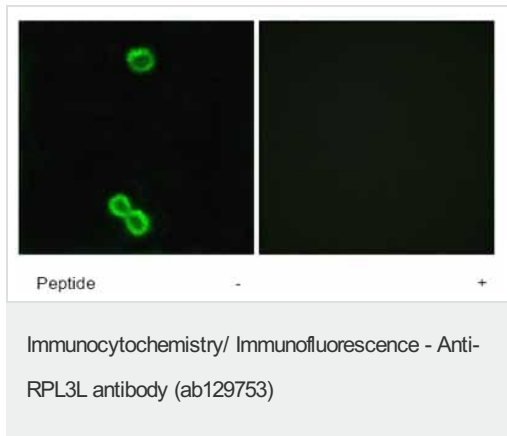
Application	Abreviews	Notes
IHC-P		1/50 - 1/100.
ICC/IF		1/100 - 1/500.

Target

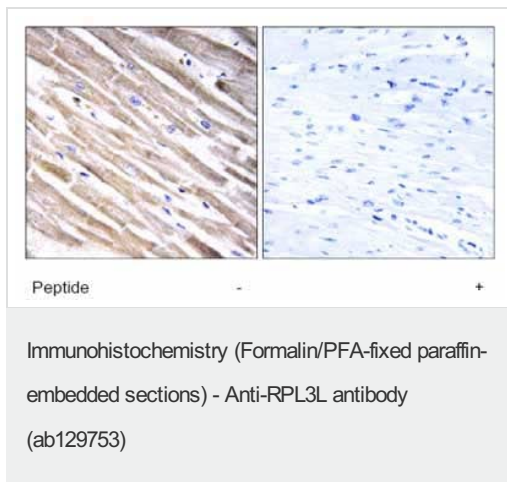
Sequence similarities

Belongs to the ribosomal protein L3P family.

Images



ab129753, at 1/100 dilution, staining RPL3L in MCF-7 cells by Immunofluorescence, in the presence (right panel) or absence (left panel) of immunizing peptide.



ab129753, at 1/50 dilution, staining RPL3L in paraffin-embedded Human Heart tissue by Immunohistochemistry, in the presence (right panel) or absence (left panel) of immunizing peptide.

Please note: All products are "FOR RESEARCH USE ONLY. NOT FOR USE IN DIAGNOSTIC PROCEDURES"

Our Abpromise to you: Quality guaranteed and expert technical support

- Replacement or refund for products not performing as stated on the datasheet
- Valid for 12 months from date of delivery
- Response to your inquiry within 24 hours
- We provide support in Chinese, English, French, German, Japanese and Spanish
- Extensive multi-media technical resources to help you
- We investigate all quality concerns to ensure our products perform to the highest standards

If the product does not perform as described on this datasheet, we will offer a refund or replacement. For full details of the Abpromise, please visit <https://www.abcam.com/abpromise> or contact our technical team.

Terms and conditions

- Guarantee only valid for products bought direct from Abcam or one of our authorized distributors