


Product datasheet

Anti-RPL7 antibody ab72550

★★★★★ 1 Abreviews 15 References 5 Images

Overview

Product name	Anti-RPL7 antibody
Description	Rabbit polyclonal to RPL7
Host species	Rabbit
Tested applications	Suitable for: WB, IP, IHC-P
Species reactivity	Reacts with: Mouse, Human Predicted to work with: Rat, Rabbit, Horse, Chicken, Guinea pig, Cow, Dog, Turkey, Pig, Rhesus monkey, Gorilla, Catfish, Orangutan, Xenopus tropicalis 
Immunogen	Synthetic peptide corresponding to a region between residue 200 and the C-terminus (residue 248) of human RPL7 (NP_000962.2)
General notes	<p>Reproducibility is key to advancing scientific discovery and accelerating scientists' next breakthrough.</p> <p>Abcam is leading the way with our range of recombinant antibodies, knockout-validated antibodies and knockout cell lines, all of which support improved reproducibility.</p> <p>We are also planning to innovate the way in which we present recommended applications and species on our product datasheets, so that only applications & species that have been tested in our own labs, our suppliers or by selected trusted collaborators are covered by our Abpromise™ guarantee.</p> <p>In preparation for this, we have started to update the applications & species that this product is Abpromise guaranteed for.</p> <p>We are also updating the applications & species that this product has been “predicted to work with,” however this information is not covered by our Abpromise guarantee.</p> <p>Applications & species from publications and Abreviews that have not been tested in our own labs or in those of our suppliers are not covered by the Abpromise guarantee.</p> <p>Please check that this product meets your needs before purchasing. If you have any questions, special requirements or concerns, please send us an inquiry and/or contact our Support team ahead of purchase. Recommended alternatives for this product can be found below, as well as customer reviews and Q&As.</p>

Properties

Form	Liquid
-------------	--------

Storage instructions	Shipped at 4°C. Upon delivery aliquot and store at -20°C. Avoid freeze / thaw cycles.
Storage buffer	pH: 6.8 Preservative: 0.09% Sodium azide Constituents: 0.1% BSA, Tris buffered saline
Purity	Immunogen affinity purified
Clonality	Polyclonal
Isotype	IgG

Applications

Our [Abpromise guarantee](#) covers the use of **ab72550** in the following tested applications.

The application notes include recommended starting dilutions; optimal dilutions/concentrations should be determined by the end user.

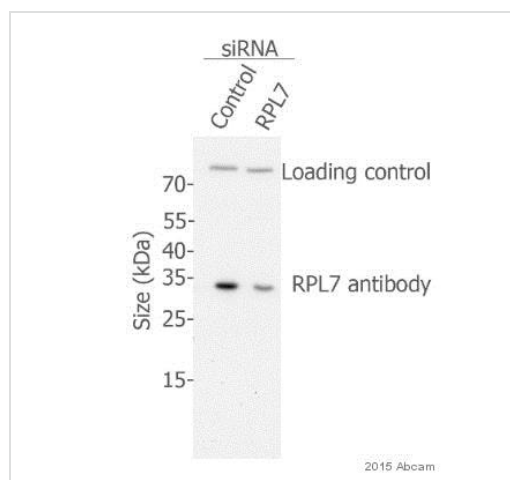
Application	Abreviews	Notes
WB	★★★★★	1/2000 - 1/10000. Detects a band of approximately 29 kDa (predicted molecular weight: 29 kDa).
IP		Use at 2-5 µg/mg of lysate.
IHC-P		Use a concentration of 1 mg/ml. Perform heat mediated antigen retrieval before commencing with IHC staining protocol.

Target

Function Binds to G-rich structures in 28S rRNA and in mRNAs. Plays a regulatory role in the translation apparatus; inhibits cell-free translation of mRNAs.

Sequence similarities Belongs to the ribosomal protein L30P family.

Images



Western blot - Anti-RPL7 antibody (ab72550)

This image is courtesy of an Abreview submitted by Loren Gibson

All lanes : Anti-RPL7 antibody (ab72550)

Lane 1 : U2OS whole cell lysate treated with control siRNA

Lane 2 : U2OS whole cell lysate treated with RPL7 siRNA

Lysates/proteins at 10 µg per lane.

Secondary

All lanes : HRP-conjugated donkey anti-rabbit IgG polyclonal at 1/1 dilution

Developed using the ECL technique.

Performed under reducing conditions.

Predicted band size: 29 kDa

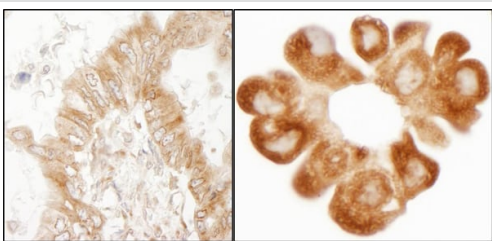
Observed band size: 30 kDa

[why is the actual band size different from the predicted?](#)

Exposure time: 10 seconds

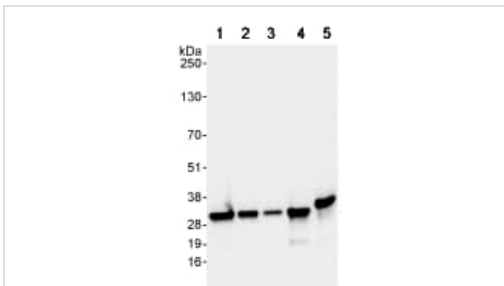
Blocked with 2% milk for 1 hour at 18°C.

Incubated with the primary antibody in 2% milk for 18 hours at 4°C.



Immunohistochemistry (Formalin/PFA-fixed paraffin-embedded sections) - Anti-RPL7 antibody (ab72550)

Immunohistochemistry (Formalin/PFA-fixed paraffin-embedded sections) analysis of human lung carcinoma and bronchioalveolar carcinoma pleural effusion tissue labelling RPL7 with ab72550 at 1/1000 (0.2µg/ml) and 1/200 (1µg/ml). Detection: DAB.



Western blot - Anti-RPL7 antibody (ab72550)

All lanes : Anti-RPL7 antibody (ab72550) at 0.04 µg/ml

Lane 1 : HeLa whole cell lysate at 50 µg

Lane 2 : HeLa whole cell lysate at 15 µg

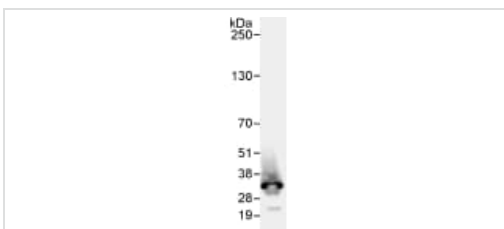
Lane 3 : HeLa whole cell lysate at 5 µg

Lane 4 : 293T whole cell lysate at 50 µg

Lane 5 : NIH3T3 whole cell lysate at 50 µg

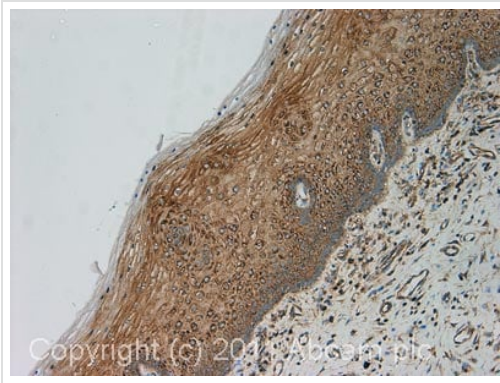
Predicted band size: 29 kDa

Observed band size: 29 kDa



Immunoprecipitation - Anti-RPL7 antibody (ab72550)

Detection of Human RPL7 by Immunoprecipitation from Whole cell lysate from HeLa cells (1 mg for IP, 20% of IP loaded), using ab72550 at 3 µg/mg lysate for IP and at 1 µg/ml for subsequent Western blot detection.



Immunohistochemistry (Formalin/PFA-fixed paraffin-embedded sections) - Anti-RPL7 antibody (ab72550)

IHC image of ab72550 staining in human normal cervix formalin fixed paraffin embedded tissue section, performed on a Leica Bond™ system using the standard protocol F. The section was pre-treated using heat mediated antigen retrieval with sodium citrate buffer (pH6, epitope retrieval solution 1) for 20 mins. The section was then incubated with ab72550, 1µg/ml, for 15 mins at room temperature and detected using an HRP conjugated compact polymer system. DAB was used as the chromogen. The section was then counterstained with haematoxylin and mounted with DPX.

For other IHC staining systems (automated and non-automated) customers should optimize variable parameters such as antigen retrieval conditions, primary antibody concentration and antibody incubation times.

Please note: All products are "FOR RESEARCH USE ONLY. NOT FOR USE IN DIAGNOSTIC PROCEDURES"

Our Abpromise to you: Quality guaranteed and expert technical support

- Replacement or refund for products not performing as stated on the datasheet
- Valid for 12 months from date of delivery
- Response to your inquiry within 24 hours
- We provide support in Chinese, English, French, German, Japanese and Spanish
- Extensive multi-media technical resources to help you
- We investigate all quality concerns to ensure our products perform to the highest standards

If the product does not perform as described on this datasheet, we will offer a refund or replacement. For full details of the Abpromise, please visit <https://www.abcam.com/abpromise> or contact our technical team.

Terms and conditions

- Guarantee only valid for products bought direct from Abcam or one of our authorized distributors