


## Product datasheet

# Anti-RPL7A antibody ab155147

★★★★★ 1 Abreviews 1 References 4 Images

### Overview

---

<b>Product name</b>	Anti-RPL7A antibody
<b>Description</b>	Rabbit polyclonal to RPL7A
<b>Host species</b>	Rabbit
<b>Tested applications</b>	<b>Suitable for:</b> WB, IHC-P, ICC/IF
<b>Species reactivity</b>	<b>Reacts with:</b> Mouse, Human <b>Predicted to work with:</b> Rat, Chicken, Cow, Xenopus laevis, Monkey, Zebrafish, Xenopus tropicalis 
<b>Immunogen</b>	Recombinant fragment, corresponding to a region within amino acids 15-296 of Human RPL7A (UniProt P62424).
<b>Positive control</b>	A431, Jurkat, Raji, Neuro2A, GL261 and C8D30 whole cell lysates; A431 cells; Human lung adenocarcinoma tissue.
<b>General notes</b>	<p>The Life Science industry has been in the grips of a reproducibility crisis for a number of years. Abcam is leading the way in addressing this with our range of recombinant monoclonal antibodies and knockout edited cell lines for gold-standard validation. Please check that this product meets your needs before purchasing.</p> <p>If you have any questions, special requirements or concerns, please send us an inquiry and/or contact our Support team ahead of purchase. Recommended alternatives for this product can be found below, along with publications, customer reviews and Q&amp;As</p>

### Properties

---

<b>Form</b>	Liquid
<b>Storage instructions</b>	Shipped at 4°C. Upon delivery aliquot. Store at -20°C or -80°C. Avoid freeze / thaw cycle.
<b>Storage buffer</b>	pH: 7.00 Preservative: 0.01% Thimerosal (merthiolate) Constituents: 1.21% Tris, 0.75% Glycine, 20% Glycerol (glycerin, glycerine)
<b>Purity</b>	Immunogen affinity purified
<b>Clonality</b>	Polyclonal
<b>Isotype</b>	IgG

## Applications

### The Abpromise guarantee

Our [Abpromise guarantee](#) covers the use of ab155147 in the following tested applications.

The application notes include recommended starting dilutions; optimal dilutions/concentrations should be determined by the end user.

Application	Abreviews	Notes
WB	★★★★★ (1)	1/500 - 1/3000. Predicted molecular weight: 30 kDa.
IHC-P		1/100 - 1/1000. Perform heat mediated antigen retrieval before commencing with IHC staining protocol using 10mM Citrate buffer (pH6.0) or Tris-EDTA buffer (pH8.0).
ICC/IF		1/100 - 1/1000.

## Target

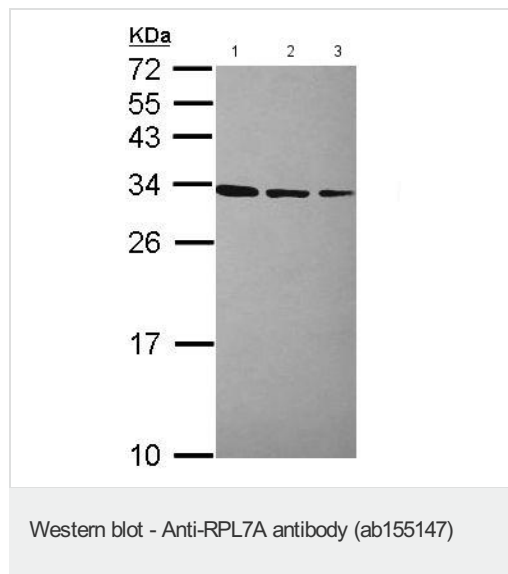
### Involvement in disease

Note=Chromosomal recombination involving RPL7A activates the receptor kinase domain of the TRK oncogene.

### Sequence similarities

Belongs to the ribosomal protein L7Ae family.

## Images



**All lanes :** Anti-RPL7A antibody (ab155147) at 1/1000 dilution

**Lane 1 :** A431 whole cell lysate

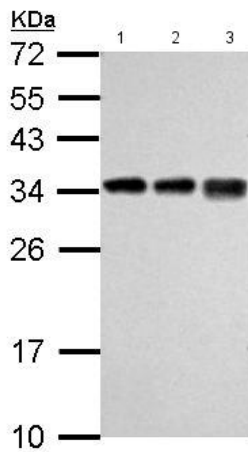
**Lane 2 :** Jurkat whole cell lysate

**Lane 3 :** Raji whole cell lysate

Lysates/proteins at 30 µg per lane.

**Predicted band size:** 30 kDa

12% SDS PAGE



Western blot - Anti-RPL7A antibody (ab155147)

**All lanes :** Anti-RPL7A antibody (ab155147) at 1/3000 dilution

**Lane 1 :** Neuro2A whole cell lysate

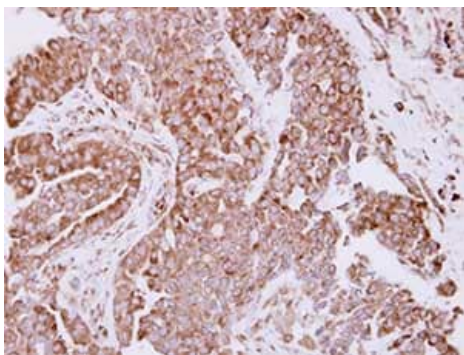
**Lane 2 :** GL261 whole cell lysate

**Lane 3 :** C8D30 whole cell lysate

Lysates/proteins at 30 µg per lane.

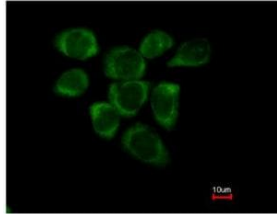
**Predicted band size:** 30 kDa

12% SDS PAGE



Immunohistochemistry (Formalin/PFA-fixed paraffin-embedded sections) - Anti-RPL7A antibody (ab155147)

Immunohistochemical analysis of paraffin-embedded Human lung adenocarcinoma tissue labeling RPL7A with ab155147 at 1/500 dilution.



Immunofluorescent analysis of methanol-fixed A431 cells labeling RPL7A with ab155147 at 1/200 dilution. Lower panel co-stained with Hoechst 33342.

Immunocytochemistry/ Immunofluorescence - Anti-RPL7A antibody (ab155147)

**Please note:** All products are "FOR RESEARCH USE ONLY. NOT FOR USE IN DIAGNOSTIC PROCEDURES"

### Our Abpromise to you: Quality guaranteed and expert technical support

---

- Replacement or refund for products not performing as stated on the datasheet
- Valid for 12 months from date of delivery
- Response to your inquiry within 24 hours
- We provide support in Chinese, English, French, German, Japanese and Spanish
- Extensive multi-media technical resources to help you
- We investigate all quality concerns to ensure our products perform to the highest standards

If the product does not perform as described on this datasheet, we will offer a refund or replacement. For full details of the Abpromise, please visit <https://www.abcam.com/abpromise> or contact our technical team.

### Terms and conditions

---

- Guarantee only valid for products bought direct from Abcam or one of our authorized distributors