


Product datasheet

Anti-RPRD2 antibody ab10363

1 References 1 Image

Overview

Product name	Anti-RPRD2 antibody
Description	Goat polyclonal to RPRD2
Host species	Goat
Tested applications	Suitable for: WB
Species reactivity	Reacts with: Human Predicted to work with: Mouse, Dog, Pig, Chimpanzee, Rhesus monkey, Gorilla, Orangutan 
Immunogen	Synthetic peptide corresponding to Human RPRD2. (LocusLink ID 23248)
Positive control	Whole cell lysate from HeLa cells.
General notes	This product was previously labelled as KIAA0460

The Life Science industry has been in the grips of a reproducibility crisis for a number of years. Abcam is leading the way in addressing this with our range of recombinant monoclonal antibodies and knockout edited cell lines for gold-standard validation. Please check that this product meets your needs before purchasing.

If you have any questions, special requirements or concerns, please send us an inquiry and/or contact our Support team ahead of purchase. Recommended alternatives for this product can be found below, along with publications, customer reviews and Q&As

Properties

Form	Liquid
Storage instructions	Shipped at 4°C. Upon delivery aliquot and store at -20°C. Avoid freeze / thaw cycles.
Storage buffer	pH: 7 Preservative: 0.1% Sodium azide Constituents: 0.021% PBS, 1.764% Sodium citrate, 1.815% Tris
Purity	Immunogen affinity purified
Clonality	Polyclonal
Isotype	IgG

Applications

The Abpromise guarantee

Our [Abpromise guarantee](#) covers the use of ab10363 in the following tested applications.

The application notes include recommended starting dilutions; optimal dilutions/concentrations should be determined by the end user.

Application	Abreviews	Notes
WB		1/1000 - 1/5000. Detects a band of approximately 220 kDa (predicted molecular weight: 160 kDa).

Target

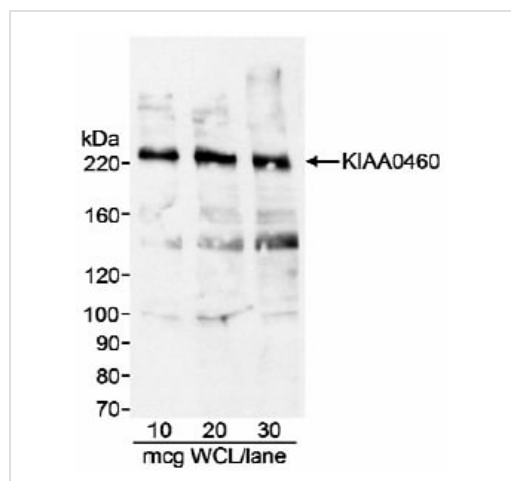
Relevance

This is a hypothetical protein fragment believed to be involved in DNA repair. KIAA0460 contains 1 CID domain.

Cellular localization

Nuclear

Images



Western blot - Anti-RPRD2 antibody (ab10363)

ab10363 detection of human RPRD2 by Western blot. Samples:

Whole cell lysate (WCL; amounts indicated) from HeLa cells.

Antibody: ab10363 used at 1 mg/ml. Detection:

Chemiluminescence with 3 minute exposure.

Please note: All products are "FOR RESEARCH USE ONLY. NOT FOR USE IN DIAGNOSTIC PROCEDURES"

Our Abpromise to you: Quality guaranteed and expert technical support

- Replacement or refund for products not performing as stated on the datasheet
- Valid for 12 months from date of delivery
- Response to your inquiry within 24 hours
- We provide support in Chinese, English, French, German, Japanese and Spanish
- Extensive multi-media technical resources to help you
- We investigate all quality concerns to ensure our products perform to the highest standards

If the product does not perform as described on this datasheet, we will offer a refund or replacement. For full details of the Abpromise, please visit <https://www.abcam.com/abpromise> or contact our technical team.

Terms and conditions

- Guarantee only valid for products bought direct from Abcam or one of our authorized distributors