


Product datasheet

Anti-RPS3A antibody ab264368

3 Images

Overview

Product name	Anti-RPS3A antibody
Description	Rabbit polyclonal to RPS3A
Host species	Rabbit
Tested applications	Suitable for: IP, IHC-P, WB
Species reactivity	Reacts with: Mouse, Human Predicted to work with: Cow, Cat 
Immunogen	Synthetic peptide within Human RPS3A aa 214-264. The exact sequence is proprietary. Database link: P61247
Positive control	IHC-P: Human ovarian carcinoma tissue. IP: HEK-293T whole cell lysate. WB: HeLa, HEK-293T, Jurkat, TCMK and NIH/3T3 whole cell lysate.
General notes	<p>The Life Science industry has been in the grips of a reproducibility crisis for a number of years. Abcam is leading the way in addressing this with our range of recombinant monoclonal antibodies and knockout edited cell lines for gold-standard validation. Please check that this product meets your needs before purchasing.</p> <p>If you have any questions, special requirements or concerns, please send us an inquiry and/or contact our Support team ahead of purchase. Recommended alternatives for this product can be found below, along with publications, customer reviews and Q&As</p>

Properties

Form	Liquid
Storage instructions	Shipped at 4°C. Store at +4°C short term (1-2 weeks). Upon delivery aliquot. Store at -20°C. Avoid freeze / thaw cycle.
Storage buffer	pH: 7 Preservative: 0.09% Sodium azide Constituent: Tris citrate/phosphate
Purity	pH 7 to 8 Immunogen affinity purified
Clonality	Polyclonal
Isotype	IgG

Applications

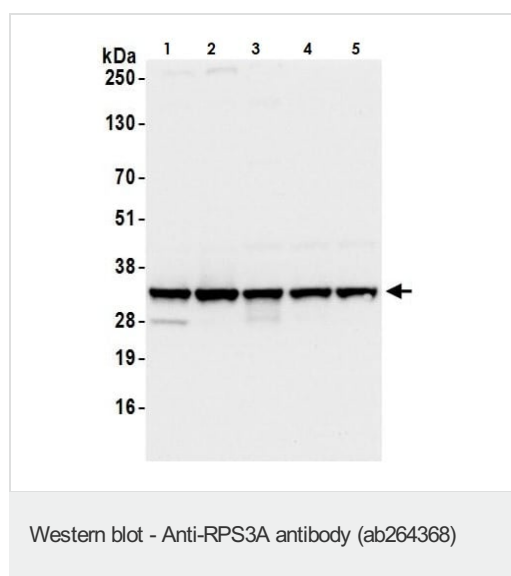
The Abpromise guarantee Our [Abpromise guarantee](#) covers the use of ab264368 in the following tested applications. The application notes include recommended starting dilutions; optimal dilutions/concentrations should be determined by the end user.

Application	Abreviews	Notes
IP		Use at 2-10 µg/mg of lysate.
IHC-P		1/500 - 1/2000. Perform heat mediated antigen retrieval with citrate buffer pH 6 before commencing with IHC staining protocol.
WB		1/2000 - 1/10000.

Target

Function May play a role during erythropoiesis through regulation of transcription factor DDIT3.
Sequence similarities Belongs to the ribosomal protein S3Ae family.
Cellular localization Cytoplasm. Nucleus. Localized in cytoplasmic mRNP granules containing untranslated mRNAs.

Images



All lanes : Anti-RPS3A antibody (ab264368) at 0.1 µg/ml

Lane 1 : HeLa (Human epithelial cell line from cervix adenocarcinoma) whole cell lysate

Lane 2 : HEK-293T (Human epithelial cell line from embryonic kidney transformed with large T antigen) whole cell lysate

Lane 3 : Jurkat (Human T cell leukemia cell line from peripheral blood) whole cell lysate

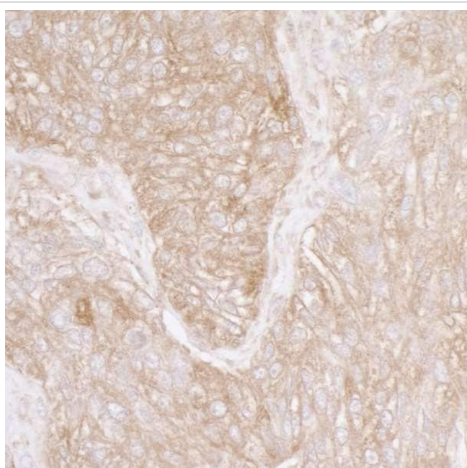
Lane 4 : TCMK (Mouse kidney epithelial cell line) whole cell lysate

Lane 5 : NIH/3T3 (Mouse embryo fibroblast cell line) whole cell lysate

Lysates/proteins at 50 µg per lane.

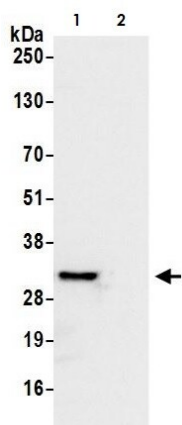
Exposure time: 3 seconds

Cells prepared using NETN lysis buffer.



Immunohistochemistry (Formalin/PFA-fixed paraffin-embedded sections) - Anti-RPS3A antibody (ab264368)

Immunohistochemical analysis of formalin-fixed, paraffin-embedded human ovarian carcinoma tissue labeling RPS3A with ab264368 at 1/5000 dilution. Detection: DAB.



Immunoprecipitation - Anti-RPS3A antibody (ab264368)

RPS3A was immunoprecipitated from 1mg of HEK-293T (Human epithelial cell line from embryonic kidney transformed with large T antigen) whole cell lysate with ab264368 at 6 μ g per reaction. Western blot was performed from the immunoprecipitate using ab264368 at 1 μ g/ml.

Lane 1: ab264368 IP in HEK-293T whole cell lysate.

Lane 2: Control IgG.

Exposure time: 3 secs.

Please note: All products are "FOR RESEARCH USE ONLY. NOT FOR USE IN DIAGNOSTIC PROCEDURES"

Our Abpromise to you: Quality guaranteed and expert technical support

- Replacement or refund for products not performing as stated on the datasheet
- Valid for 12 months from date of delivery
- Response to your inquiry within 24 hours
- We provide support in Chinese, English, French, German, Japanese and Spanish
- Extensive multi-media technical resources to help you
- We investigate all quality concerns to ensure our products perform to the highest standards

If the product does not perform as described on this datasheet, we will offer a refund or replacement. For full details of the Abpromise,

please visit <https://www.abcam.com/abpromise> or contact our technical team.

Terms and conditions

- Guarantee only valid for products bought direct from Abcam or one of our authorized distributors