


Product datasheet

Anti-RRAGC antibody ab187705

2 Images

Overview

Product name	Anti-RRAGC antibody
Description	Rabbit polyclonal to RRAGC
Host species	Rabbit
Tested applications	Suitable for: IP, WB
Species reactivity	Reacts with: Mouse, Human Predicted to work with: Rat, Sheep, Guinea pig, Cow, Dog, Pig, Orangutan 
Immunogen	Synthetic peptide within Human RRAGC aa 1-50 (N terminal). The exact sequence is proprietary. Database link: NP_071440.1
Positive control	HeLa, 293T, Jurkat, mouse TCMK-1 and mouse NIH3T3 cell lysates. 293T cells.
General notes	<p>Reproducibility is key to advancing scientific discovery and accelerating scientists' next breakthrough.</p> <p>Abcam is leading the way with our range of recombinant antibodies, knockout-validated antibodies and knockout cell lines, all of which support improved reproducibility.</p> <p>We are also planning to innovate the way in which we present recommended applications and species on our product datasheets, so that only applications & species that have been tested in our own labs, our suppliers or by selected trusted collaborators are covered by our Abpromise™ guarantee.</p> <p>In preparation for this, we have started to update the applications & species that this product is Abpromise guaranteed for.</p> <p>We are also updating the applications & species that this product has been “predicted to work with,” however this information is not covered by our Abpromise guarantee.</p> <p>Applications & species from publications and Abreviews that have not been tested in our own labs or in those of our suppliers are not covered by the Abpromise guarantee.</p> <p>Please check that this product meets your needs before purchasing. If you have any questions, special requirements or concerns, please send us an inquiry and/or contact our Support team ahead of purchase. Recommended alternatives for this product can be found below, as well as customer reviews and Q&As.</p>

Properties

Form	Liquid
Storage instructions	Shipped at 4°C. Store at +4°C short term (1-2 weeks). Upon delivery aliquot. Store at -20°C long term. Avoid freeze / thaw cycle.
Storage buffer	pH: 7 Preservative: 0.09% Sodium azide Constituent: 99% Tris citrate/phosphate
	pH 7 to 8
Purity	Immunogen affinity purified
Clonality	Polyclonal
Isotype	IgG

Applications

Our [Abpromise guarantee](#) covers the use of **ab187705** in the following tested applications.

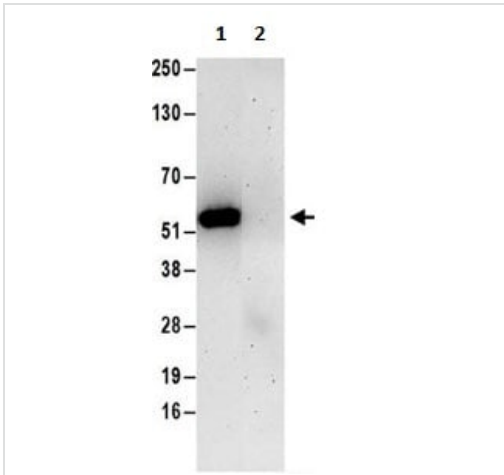
The application notes include recommended starting dilutions; optimal dilutions/concentrations should be determined by the end user.

Application	Abreviews	Notes
IP		Use at 2-10 µg/mg of lysate.
WB		1/1000 - 1/5000. Predicted molecular weight: 44 kDa.

Target

Function	Has guanine nucleotide-binding activity but weak intrinsic GTPase activity. Probably required for the amino acid-induced relocalization of mTORC1 to the lysosomes and its subsequent activation by the GTPase RHEB. This is a crucial step in the activation of the TOR signaling cascade by amino acids.
Sequence similarities	Belongs to the GTR/RAG GTP-binding protein family.
Cellular localization	Cytoplasm. Nucleus. Lysosome. Predominantly cytoplasmic. May shuttle between the cytoplasm and nucleus, depending on the bound nucleotide state of associated RRAGA.

Images

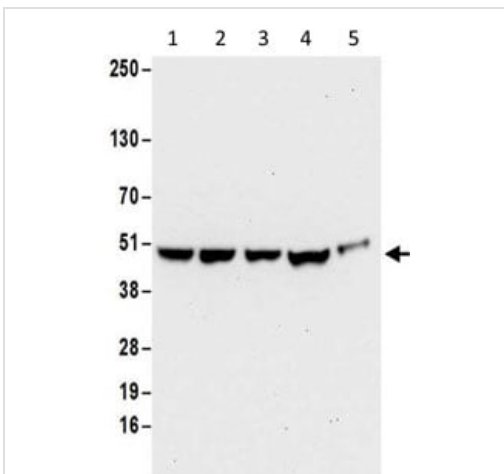


Immunoprecipitation - Anti-RRAGC antibody (ab187705)

Lane 1: Immunoprecipitation from 293T whole cell lysate (0.5 - 1 mg for IP, 20% of IP loaded), using ab187705 at 6 µg per reaction.

Lane 2: Immunoprecipitation from 293T whole cell lysate (0.5 - 1 mg for IP, 20% of IP loaded), using Control IgG.

Subsequent Western blot detection used ab187705 at 1 µg/ml.



Western blot - Anti-RRAGC antibody (ab187705)

All lanes : Anti-RRAGC antibody (ab187705) at 0.4 µg/ml

Lane 1 : HeLa cell lysate

Lane 2 : 293T cell lysate

Lane 3 : Jurkat cell lysate

Lane 4 : Mouse TCMK-1 cell lysate

Lane 5 : Mouse NIH3T3 cell lysate

Lysates/proteins at 50 µg per lane.

Developed using the ECL technique.

Predicted band size: 44 kDa

Exposure time: 30 seconds

Please note: All products are "FOR RESEARCH USE ONLY. NOT FOR USE IN DIAGNOSTIC PROCEDURES"

Our Abpromise to you: Quality guaranteed and expert technical support

- Replacement or refund for products not performing as stated on the datasheet
- Valid for 12 months from date of delivery
- Response to your inquiry within 24 hours

- We provide support in Chinese, English, French, German, Japanese and Spanish
- Extensive multi-media technical resources to help you
- We investigate all quality concerns to ensure our products perform to the highest standards

If the product does not perform as described on this datasheet, we will offer a refund or replacement. For full details of the Abpromise, please visit <https://www.abcam.com/abpromise> or contact our technical team.

Terms and conditions

- Guarantee only valid for products bought direct from Abcam or one of our authorized distributors