


Product datasheet

Anti-RRAGC antibody ab226199

1 Image

Overview

Product name	Anti-RRAGC antibody
Description	Rabbit polyclonal to RRAGC
Host species	Rabbit
Tested applications	Suitable for: IP
Species reactivity	Reacts with: Human Predicted to work with: Mouse, Rat, Sheep, Horse, Cow, Cat, Dog, Pig, Chimpanzee, Rhesus monkey, Gorilla, Orangutan, Giant Panda 
Immunogen	Synthetic peptide within Human RRAGC aa 349-399. The exact sequence is proprietary. (NP_071440.1). Database link: Q9HB90
Positive control	IP: HEK-293T whole cell lysate.
General notes	<p>Reproducibility is key to advancing scientific discovery and accelerating scientists' next breakthrough.</p> <p>Abcam is leading the way with our range of recombinant antibodies, knockout-validated antibodies and knockout cell lines, all of which support improved reproducibility.</p> <p>We are also planning to innovate the way in which we present recommended applications and species on our product datasheets, so that only applications & species that have been tested in our own labs, our suppliers or by selected trusted collaborators are covered by our Abpromise™ guarantee.</p> <p>In preparation for this, we have started to update the applications & species that this product is Abpromise guaranteed for.</p> <p>We are also updating the applications & species that this product has been “predicted to work with,” however this information is not covered by our Abpromise guarantee.</p> <p>Applications & species from publications and Abreviews that have not been tested in our own labs or in those of our suppliers are not covered by the Abpromise guarantee.</p> <p>Please check that this product meets your needs before purchasing. If you have any questions, special requirements or concerns, please send us an inquiry and/or contact our Support team ahead of purchase. Recommended alternatives for this product can be found below, as well as customer reviews and Q&As.</p>

Properties

Form	Liquid
Storage instructions	Shipped at 4°C. Store at +4°C short term (1-2 weeks). Upon delivery aliquot. Store at -20°C long term. Avoid freeze / thaw cycle.
Storage buffer	pH: 7 Preservative: 0.09% Sodium azide Constituent: Tris citrate/phosphate
Purity	pH 7 to 8 Immunogen affinity purified
Purification notes	ab226199 was affinity purified using an epitope specific to RRAGC immobilized on solid support.
Clonality	Polyclonal
Isotype	IgG

Applications

Our [Abpromise guarantee](#) covers the use of **ab226199** in the following tested applications.

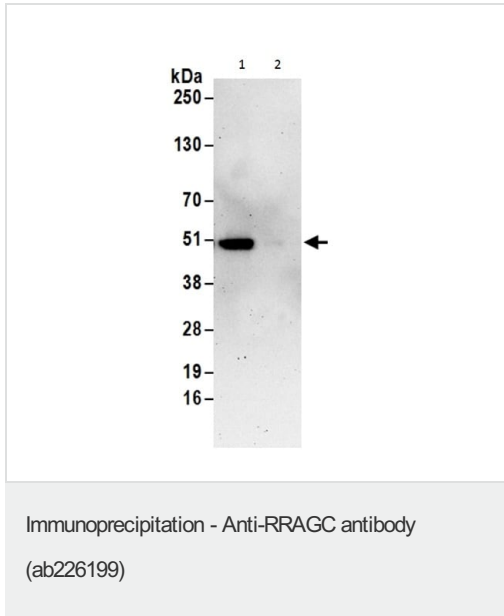
The application notes include recommended starting dilutions; optimal dilutions/concentrations should be determined by the end user.

Application	Abreviews	Notes
IP		Use at 2-10 µg/mg of lysate.

Target

Function	Has guanine nucleotide-binding activity but weak intrinsic GTPase activity. Probably required for the amino acid-induced relocalization of mTORC1 to the lysosomes and its subsequent activation by the GTPase RHEB. This is a crucial step in the activation of the TOR signaling cascade by amino acids.
Sequence similarities	Belongs to the GTR/RAG GTP-binding protein family.
Cellular localization	Cytoplasm. Nucleus. Lysosome. Predominantly cytoplasmic. May shuttle between the cytoplasm and nucleus, depending on the bound nucleotide state of associated RRAGA.

Images



RRAGC was immunoprecipitated from HEK-293T (human epithelial cell line from embryonic kidney transformed with large T antigen) whole cell lysate (20% of IP loaded) with ab226199 at 6 µg per reaction. Western blot was performed from the immunoprecipitate using ab226199 at 1 µg/ml.

Lane 1: ab226199 IP in HEK-293T whole cell lysate.

Lane 2: Control IgG IP in HEK-293T whole cell lysate.

Detection: Chemiluminescence with exposure time of 3 minutes.

Please note: All products are "FOR RESEARCH USE ONLY. NOT FOR USE IN DIAGNOSTIC PROCEDURES"

Our Abpromise to you: Quality guaranteed and expert technical support

- Replacement or refund for products not performing as stated on the datasheet
- Valid for 12 months from date of delivery
- Response to your inquiry within 24 hours
- We provide support in Chinese, English, French, German, Japanese and Spanish
- Extensive multi-media technical resources to help you
- We investigate all quality concerns to ensure our products perform to the highest standards

If the product does not perform as described on this datasheet, we will offer a refund or replacement. For full details of the Abpromise, please visit <https://www.abcam.com/abpromise> or contact our technical team.

Terms and conditions

- Guarantee only valid for products bought direct from Abcam or one of our authorized distributors