

Product datasheet

Anti-RRAS antibody ab191791

3 Images

Overview

Product name	Anti-RRAS antibody
Description	Rabbit polyclonal to RRAS
Host species	Rabbit
Tested applications	Suitable for: IP, WB
Species reactivity	Reacts with: Mouse, Rat, Human
Immunogen	Synthetic peptide (the amino acid sequence is considered to be commercially sensitive) within Human RRAS aa 1-100. The exact sequence is proprietary. Database link: P10301
Positive control	WB: Human fetal kidney, rat heart and mouse spleen lysates. IP: Human fetal kidney lysate.
General notes	<p>Reproducibility is key to advancing scientific discovery and accelerating scientists' next breakthrough.</p> <p>Abcam is leading the way with our range of recombinant antibodies, knockout-validated antibodies and knockout cell lines, all of which support improved reproducibility.</p> <p>We are also planning to innovate the way in which we present recommended applications and species on our product datasheets, so that only applications & species that have been tested in our own labs, our suppliers or by selected trusted collaborators are covered by our Abpromise™ guarantee.</p> <p>In preparation for this, we have started to update the applications & species that this product is Abpromise guaranteed for.</p> <p>We are also updating the applications & species that this product has been "predicted to work with," however this information is not covered by our Abpromise guarantee.</p> <p>Applications & species from publications and Abreviews that have not been tested in our own labs or in those of our suppliers are not covered by the Abpromise guarantee.</p> <p>Please check that this product meets your needs before purchasing. If you have any questions, special requirements or concerns, please send us an inquiry and/or contact our Support team ahead of purchase. Recommended alternatives for this product can be found below, as well as customer reviews and Q&As.</p>

Properties

Form	Liquid
-------------	--------

Storage instructions	Shipped at 4°C. Store at +4°C short term (1-2 weeks). Upon delivery aliquot. Store at -20°C long term. Avoid freeze / thaw cycle.
Storage buffer	pH: 7.40 Preservative: 0.02% Sodium azide Constituent: 99% PBS
Purity	Affinity purified
Clonality	Polyclonal
Isotype	IgG

Applications

Our [Abpromise guarantee](#) covers the use of **ab191791** in the following tested applications.

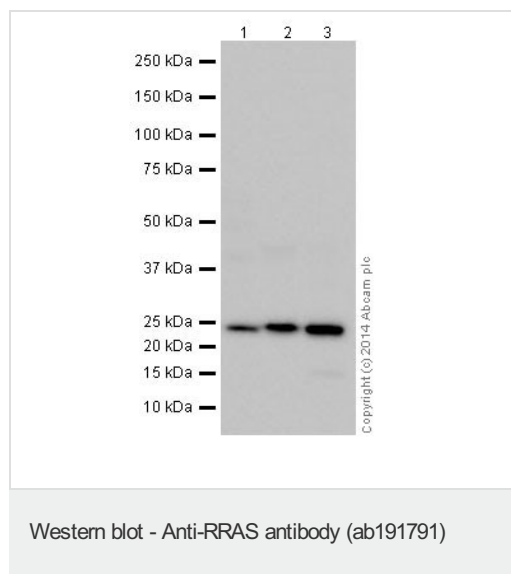
The application notes include recommended starting dilutions; optimal dilutions/concentrations should be determined by the end user.

Application	Abreviews	Notes
IP		1/60.
WB		1/500. Detects a band of approximately 23 kDa (predicted molecular weight: 23 kDa).

Target

Function	Regulates the organization of the actin cytoskeleton.
Sequence similarities	Belongs to the small GTPase superfamily. Ras family.
Cellular localization	Cell membrane. Inner surface of plasma membrane possibly with attachment requiring acylation of the C-terminal cysteine.

Images



All lanes : Anti-RRAS antibody (ab191791) at 1/500 dilution

Lane 1 : Human fetal kidney lysate

Lane 2 : Rat heart lysate

Lane 3 : Mouse spleen lysate

Lysates/proteins at 10 µg per lane.

Secondary

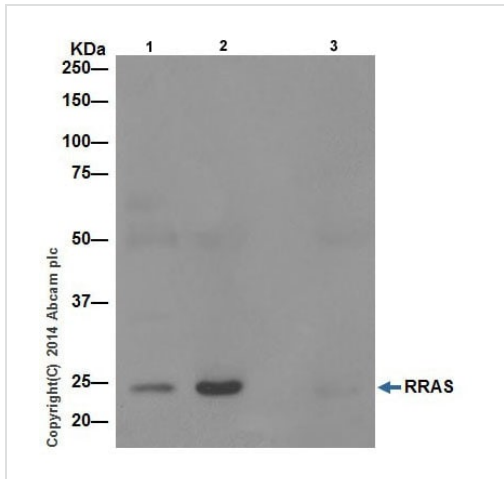
All lanes : Goat Anti-Rabbit IgG, (H+L), Peroxidase conjugated at 1/1000 dilution

Predicted band size: 23 kDa

Observed band size: 23 kDa

Exposure time: 1 minute

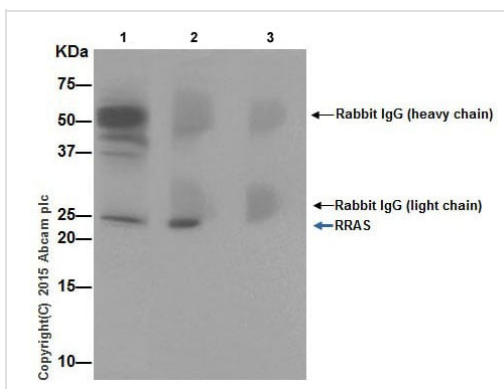
Blocking/Dilution buffer: 5% NFDm/TBST.



Immunoprecipitation - Anti-RRAS antibody
(ab191791)

RRAS was immunoprecipitated from Human fetal kidney lysate with ab191791 at 1/60 dilution. Western blot was performed from the immunoprecipitate using ab191791 at 1/500 dilution. Anti-Rabbit IgG (HRP), specific to the non-reduced form of IgG, was used as secondary antibody at 1/1500 dilution.

Lane 1: Human fetal kidney lysate 10 µg (Input). Lane 2: ab191791 IP in Human fetal kidney lysate. Lane 3: Rabbit monoclonal IgG (ab172730) instead of ab191791 in Human fetal kidney lysate. Blocking and dilution buffer and concentration: 5% NFDm/TBST.



Immunoprecipitation - Anti-RRAS antibody
(ab191791)

RRAS was immunoprecipitated from Human fetal kidney lysate with ab191791 at 1/60 dilution. Western blot was performed from the immunoprecipitate using ab191399 at 1/500 dilution. Anti-Rabbit IgG (HRP), specific to the non-reduced form of IgG, was used as secondary antibody at 1/1500 dilution.

Lane 1: Human fetal kidney lysate 10 µg (Input). Lane 2: ab191791 IP in Human fetal kidney lysate. Lane 3: Rabbit monoclonal IgG (ab172730) instead of ab191791 in Human fetal kidney lysate. Blocking and dilution buffer and concentration: 5% NFDm/TBST.

ab191791 was used to Immunoprecipitate RRAS. These precipitates were resolved with ab191399.

Please note: All products are "FOR RESEARCH USE ONLY. NOT FOR USE IN DIAGNOSTIC PROCEDURES"

Our Abpromise to you: Quality guaranteed and expert technical support

- Replacement or refund for products not performing as stated on the datasheet
- Valid for 12 months from date of delivery
- Response to your inquiry within 24 hours
- We provide support in Chinese, English, French, German, Japanese and Spanish

- Extensive multi-media technical resources to help you
- We investigate all quality concerns to ensure our products perform to the highest standards

If the product does not perform as described on this datasheet, we will offer a refund or replacement. For full details of the Abpromise, please visit <https://www.abcam.com/abpromise> or contact our technical team.

Terms and conditions

- Guarantee only valid for products bought direct from Abcam or one of our authorized distributors