


Product datasheet

Anti-RRM2 antibody ab154964

1 References 3 Images

Overview

Product name	Anti-RRM2 antibody
Description	Rabbit polyclonal to RRM2
Host species	Rabbit
Tested applications	Suitable for: WB, IHC-P, ICC/IF
Species reactivity	Reacts with: Human Predicted to work with: Cow, Zebrafish 
Immunogen	Recombinant fragment corresponding to a region within amino acids 1-259 of RRM2 (P31350).
Positive control	293T, A431, H1299, HeLa, Molt4 whole cell lysates; A549 cells; Human Cal27 xenograft tissue.

Properties

Form	Liquid
Storage instructions	Shipped at 4°C. Upon delivery aliquot. Store at -20°C or -80°C. Avoid freeze / thaw cycle.
Storage buffer	pH: 7.00 Preservative: 0.01% Thimerosal (merthiolate) Constituents: 0.75% Glycine, 1.21% Tris, 10% Glycerol
Purity	Immunogen affinity purified
Clonality	Polyclonal
Isotype	IgG

Applications

Our [Abpromise guarantee](#) covers the use of **ab154964** in the following tested applications.

The application notes include recommended starting dilutions; optimal dilutions/concentrations should be determined by the end user.

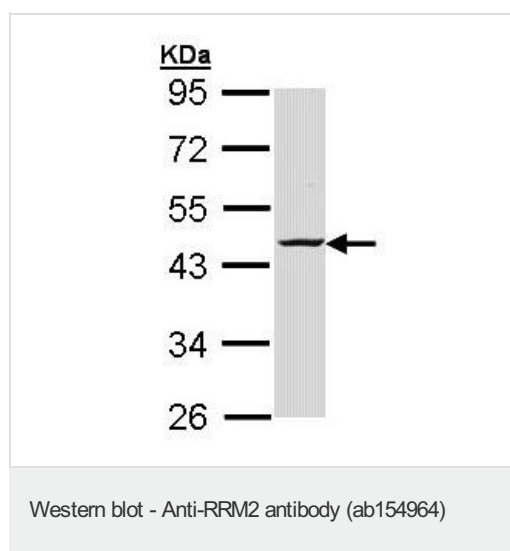
Application	Abreviews	Notes
WB		1/500 - 1/3000. Predicted molecular weight: 45 kDa.
IHC-P		1/100 - 1/1000. Perform heat mediated antigen retrieval before commencing with IHC staining protocol using 10mM Citrate buffer (pH6.0) or Tris-EDTA buffer (pH8.0).

Application	Abreviews	Notes
ICC/IF		1/100 - 1/1000.

Target

Function	Provides the precursors necessary for DNA synthesis. Catalyzes the biosynthesis of deoxyribonucleotides from the corresponding ribonucleotides. Inhibits Wnt signaling.
Pathway	Genetic information processing; DNA replication.
Sequence similarities	Belongs to the ribonucleoside diphosphate reductase small chain family.
Post-translational modifications	Phosphorylation on Ser-20 relieves the inhibitory effect on Wnt signaling.
Cellular localization	Cytoplasm.

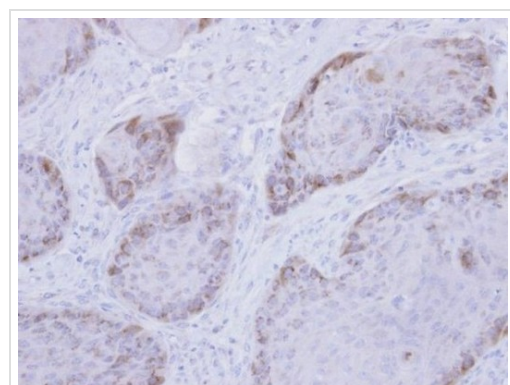
Images



Anti-RRM2 antibody (ab154964) at 1/1000 dilution + H1299 whole cell lysate at 30 µg

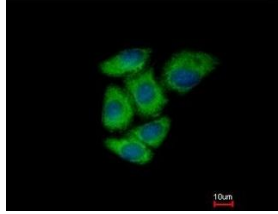
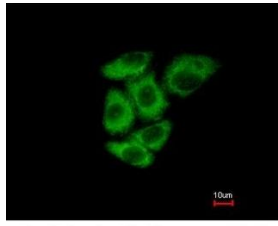
Predicted band size: 45 kDa

10% SDS PAGE



Immunohistochemical analysis of paraffin embedded Human Cal27 xenograft tissue labeling RRM2 with ab154964 at 1/500.

Immunohistochemistry (Formalin/PFA-fixed paraffin-embedded sections) - Anti-RRM2 antibody (ab154964)



Immunofluorescence analysis of methanol fixed A549 cells labeling RRM2 with ab154964 at 1/500. Lower panel shows costaining with Hoechst 33342.

Immunocytochemistry/ Immunofluorescence - Anti-RRM2 antibody (ab154964)

Please note: All products are "FOR RESEARCH USE ONLY AND ARE NOT INTENDED FOR DIAGNOSTIC OR THERAPEUTIC USE"

Our Abpromise to you: Quality guaranteed and expert technical support

- Replacement or refund for products not performing as stated on the datasheet
- Valid for 12 months from date of delivery
- Response to your inquiry within 24 hours
- We provide support in Chinese, English, French, German, Japanese and Spanish
- Extensive multi-media technical resources to help you
- We investigate all quality concerns to ensure our products perform to the highest standards

If the product does not perform as described on this datasheet, we will offer a refund or replacement. For full details of the Abpromise, please visit <https://www.abcam.com/abpromise> or contact our technical team.

Terms and conditions

- Guarantee only valid for products bought direct from Abcam or one of our authorized distributors