

Product datasheet

Anti-RRS1 antibody - C-terminal ab174350

2 Images

Overview

Product name	Anti-RRS1 antibody - C-terminal
Description	Rabbit polyclonal to RRS1 - C-terminal
Host species	Rabbit
Tested applications	Suitable for: Flow Cyt, WB
Species reactivity	Reacts with: Human
Immunogen	Synthetic peptide within Human RRS1 aa 336-365 (C terminal) conjugated to Keyhole Limpet Haemocyanin (KLH). The exact sequence is proprietary. Database link: Q15050
Positive control	293 cell lysate; 293 cells.

Properties

Form	Liquid
Storage instructions	Shipped at 4°C. Store at +4°C short term (1-2 weeks). Upon delivery aliquot. Store at -20°C long term. Avoid freeze / thaw cycle.
Storage buffer	Preservative: 0.09% Sodium azide Constituent: 99% PBS
Purity	Immunogen affinity purified
Purification notes	ab174350 is purified through a protein A column, followed by peptide affinity purification.
Clonality	Polyclonal
Isotype	IgG

Applications

Our [Abpromise guarantee](#) covers the use of **ab174350** in the following tested applications.

The application notes include recommended starting dilutions; optimal dilutions/concentrations should be determined by the end user.

Application	Abreviews	Notes
-------------	-----------	-------

Application	Abreviews	Notes
Flow Cyt		1/10 - 1/50. ab171870 - Rabbit polyclonal IgG, is suitable for use as an isotype control with this antibody.
WB		1/100 - 1/500. Predicted molecular weight: 41 kDa.

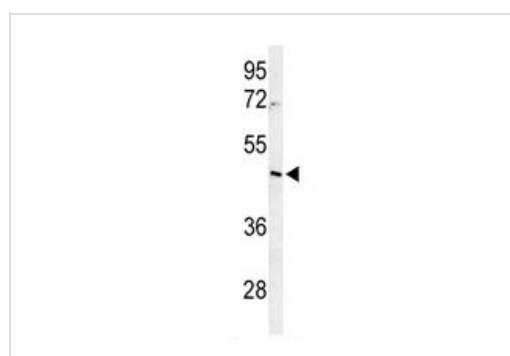
Target

Function Involved in ribosome biogenesis.

Sequence similarities Belongs to the RRS1 family.

Cellular localization Nucleus > nucleolus.

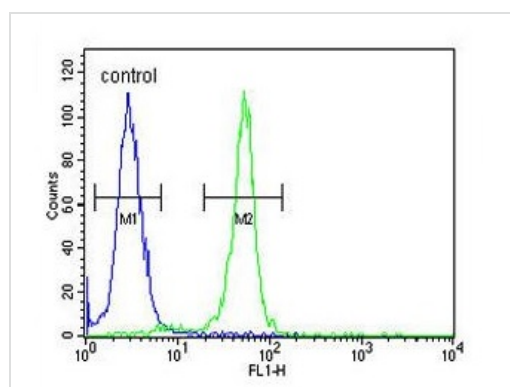
Images



Western blot - Anti-RRS1 antibody - C-terminal (ab174350)

Anti-RRS1 antibody - C-terminal (ab174350) at 1/100 dilution + 293 cell line lysates at 35 µg

Predicted band size: 41 kDa



Flow Cytometry - Anti-RRS1 antibody - C-terminal (ab174350)

Flow cytometric analysis of 293 cells labeling RRS1 with ab174350 at 1/10 dilution (right histogram) compared to a negative control cell (left histogram). FITC-conjugated goat-anti-rabbit secondary antibodies were used for the analysis.

Please note: All products are "FOR RESEARCH USE ONLY AND ARE NOT INTENDED FOR DIAGNOSTIC OR THERAPEUTIC USE"

Our Abpromise to you: Quality guaranteed and expert technical support

- Replacement or refund for products not performing as stated on the datasheet
- Valid for 12 months from date of delivery
- Response to your inquiry within 24 hours

- We provide support in Chinese, English, French, German, Japanese and Spanish
- Extensive multi-media technical resources to help you
- We investigate all quality concerns to ensure our products perform to the highest standards

If the product does not perform as described on this datasheet, we will offer a refund or replacement. For full details of the Abpromise, please visit <https://www.abcam.com/abpromise> or contact our technical team.

Terms and conditions

- Guarantee only valid for products bought direct from Abcam or one of our authorized distributors