

Product datasheet

Anti-RS1 antibody ab233428

[2 Images](#)

Overview

Product name	Anti-RS1 antibody
Description	Rabbit polyclonal to RS1
Host species	Rabbit
Tested applications	Suitable for: WB
Species reactivity	Reacts with: Pig Predicted to work with: Mouse, Human
Immunogen	<p>Recombinant full length protein corresponding to Human RS1 aa 24-224. Mature chain. Two N-terminal tags, His-tag and GST-tag. Expressed in E.coli.</p> <p>Sequence:</p> <pre> STEDEGEDPWYQKACKCDCQGGPNALWSAGATSLDCIP ECPYHKPLGFES GEVTPDQITCSNPEQYVWYSSWTANKARLNSQGFGCA WLSKFQDSSQWL QIDLKEIKVISGILTQGRCDIDEWMTKYSVQYRTDERLNWIYY KDQTGNN RVFYGNSDRTSTVQNLLRPPIISRFIRLIPLGWHVRIARMEL LECVSKC A </pre> <p>Database link: O15537</p> <p style="text-align: right;"> Run BLAST with Run BLAST with </p>
Positive control	WB: Recombinant human RS1 protein; Pig eye tissue lysate.
General notes	<p>Reproducibility is key to advancing scientific discovery and accelerating scientists' next breakthrough.</p> <p>Abcam is leading the way with our range of recombinant antibodies, knockout-validated antibodies and knockout cell lines, all of which support improved reproducibility.</p> <p>We are also planning to innovate the way in which we present recommended applications and species on our product datasheets, so that only applications & species that have been tested in our own labs, our suppliers or by selected trusted collaborators are covered by our Abpromise™ guarantee.</p> <p>In preparation for this, we have started to update the applications & species that this product is Abpromise guaranteed for.</p> <p>We are also updating the applications & species that this product has been "predicted to work</p>

with," however this information is not covered by our Abpromise guarantee.

Applications & species from publications and Abreviews that have not been tested in our own labs or in those of our suppliers are not covered by the Abpromise guarantee.

Please check that this product meets your needs before purchasing. If you have any questions, special requirements or concerns, please send us an inquiry and/or contact our Support team ahead of purchase. Recommended alternatives for this product can be found below, as well as customer reviews and Q&As.

Properties

Form	Liquid
Storage instructions	Shipped at 4°C. Store at +4°C short term (1-2 weeks). Upon delivery aliquot. Store at -20°C long term. Avoid freeze / thaw cycle.
Storage buffer	pH: 7.40 Preservative: 0.02% Sodium azide Constituents: PBS, 50% Glycerol
Purity	Immunogen affinity purified
Purification notes	Antigen-specific affinity chromatography followed by Protein A affinity chromatography.
Clonality	Polyclonal
Isotype	IgG

Applications

Our [Abpromise guarantee](#) covers the use of **ab233428** in the following tested applications.

The application notes include recommended starting dilutions; optimal dilutions/concentrations should be determined by the end user.

Application	Abreviews	Notes
WB		Use a concentration of 0.2 - 2 µg/ml. Predicted molecular weight: 26 kDa.

Target

Function	May be active in cell adhesion processes during retinal development.
Tissue specificity	Restricted to the retina (at protein level). At the mRNA level, detected only within the photoreceptor cell layer, most prominently within the inner segments of the photoreceptors. Undetectable in the inner plexiform layers and the inner nuclear layer. At the protein level, found in the inner segment of the photoreceptors, the inner nuclear layer, the inner plexiform layer and the ganglion cell layer. At the macula, expressed in both the outer and inner nuclear layers and in the inner plexiform layer (at protein level).
Involvement in disease	Defects in RS1 are the cause of retinoschisis juvenile X-linked type 1 (XLRS1) [MIM:312700]. A vitreo-retinal dystrophy characterized by macular pathology and by splitting of the superficial layer of the retina. Macular changes are present in almost all cases. In the fundi, radially oriented intraretinal foveomacular cysts are seen in a spoke-wheel configuration, with the absence of foveal reflex in most cases. In addition, approximately half of cases have bilateral peripheral

retinoschisis in the inferotemporal part of the retina. Aside from the typical fundus appearance, strabismus, nystagmus, axial hyperopia, defective color vision and foveal ectopy can be present. The most important complications are vitreous hemorrhage, retinal detachment, and neovascular glaucoma.

Sequence similarities

Contains 1 F5/8 type C domain.

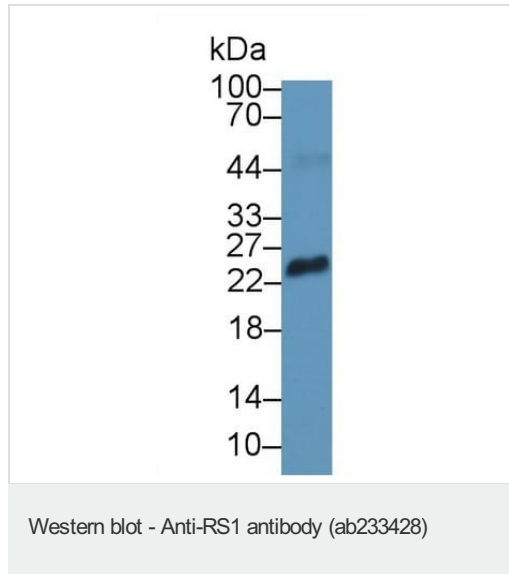
Developmental stage

Up-regulated during the differentiation of a retinoblastoma cell line.

Cellular localization

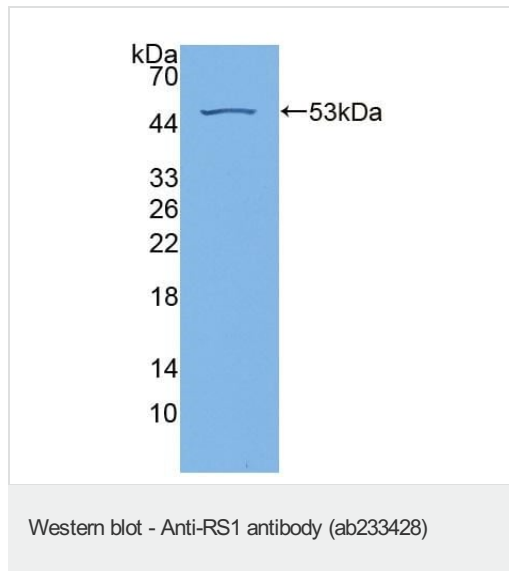
Secreted.

Images



Anti-RS1 antibody (ab233428) at 2 µg/ml + Pig eye tissue lysate.

Predicted band size: 26 kDa



Anti-RS1 antibody (ab233428) at 2 µg/ml + Recombinant human RS1 protein.

Predicted band size: 26 kDa

Please note: All products are "FOR RESEARCH USE ONLY. NOT FOR USE IN DIAGNOSTIC PROCEDURES"

Our Abpromise to you: Quality guaranteed and expert technical support

- Replacement or refund for products not performing as stated on the datasheet

- Valid for 12 months from date of delivery
- Response to your inquiry within 24 hours

- We provide support in Chinese, English, French, German, Japanese and Spanish
- Extensive multi-media technical resources to help you
- We investigate all quality concerns to ensure our products perform to the highest standards

If the product does not perform as described on this datasheet, we will offer a refund or replacement. For full details of the Abpromise, please visit <https://www.abcam.com/abpromise> or contact our technical team.

Terms and conditions

- Guarantee only valid for products bought direct from Abcam or one of our authorized distributors