


## Product datasheet

# Anti-Rsk 2 / MAPKAP Kinase 1b antibody ab226920

3 Images

### Overview

---

<b>Product name</b>	Anti-Rsk 2 / MAPKAP Kinase 1b antibody
<b>Description</b>	Rabbit polyclonal to Rsk 2 / MAPKAP Kinase 1b
<b>Host species</b>	Rabbit
<b>Tested applications</b>	<b>Suitable for:</b> WB, IHC-P
<b>Species reactivity</b>	<b>Reacts with:</b> Mouse, Rat, Human <b>Predicted to work with:</b> Cow, Xenopus laevis 
<b>Immunogen</b>	Recombinant fragment within Human Rsk 2/ MAPKAP Kinase 1b (internal sequence). The exact sequence is proprietary. Database link: <a href="#">P51812</a>
<b>Positive control</b>	WB: HepG2 whole cell extract. IHC-P: Rat middle brain tissue; Mouse muscle tissue.
<b>General notes</b>	<p>Reproducibility is key to advancing scientific discovery and accelerating scientists' next breakthrough.</p> <p>Abcam is leading the way with our range of recombinant antibodies, knockout-validated antibodies and knockout cell lines, all of which support improved reproducibility.</p> <p>We are also planning to innovate the way in which we present recommended applications and species on our product datasheets, so that only applications &amp; species that have been tested in our own labs, our suppliers or by selected trusted collaborators are covered by our Abpromise™ guarantee.</p> <p>In preparation for this, we have started to update the applications &amp; species that this product is Abpromise guaranteed for.</p> <p>We are also updating the applications &amp; species that this product has been “predicted to work with,” however this information is not covered by our Abpromise guarantee.</p> <p>Applications &amp; species from publications and Abreviews that have not been tested in our own labs or in those of our suppliers are not covered by the Abpromise guarantee.</p> <p>Please check that this product meets your needs before purchasing. If you have any questions, special requirements or concerns, please send us an inquiry and/or contact our Support team ahead of purchase. Recommended alternatives for this product can be found below, as well as customer reviews and Q&amp;As.</p>

### Properties

---

<b>Form</b>	Liquid
<b>Storage instructions</b>	Shipped at 4°C. Store at +4°C short term (1-2 weeks). Upon delivery aliquot. Store at -20°C long term. Avoid freeze / thaw cycle.
<b>Storage buffer</b>	pH: 7.00 Preservative: 0.01% Thimerosal (merthiolate) Constituents: 79.99% PBS, 20% Glycerol (glycerin, glycerine)
<b>Purity</b>	Immunogen affinity purified
<b>Clonality</b>	Polyclonal
<b>Isotype</b>	IgG

## Applications

Our [Abpromise guarantee](#) covers the use of **ab226920** in the following tested applications.

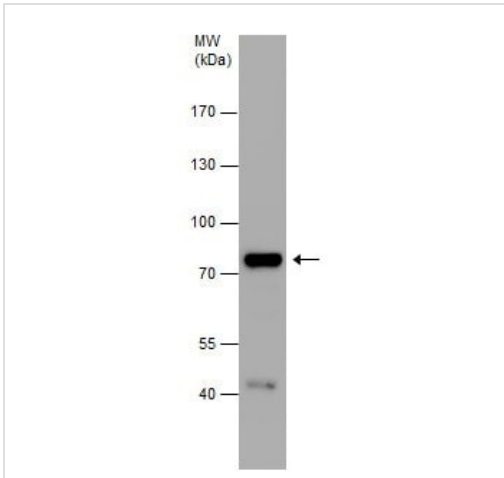
The application notes include recommended starting dilutions; optimal dilutions/concentrations should be determined by the end user.

Application	Abreviews	Notes
WB		1/500 - 1/10000. Predicted molecular weight: 84 kDa.
IHC-P		1/100 - 1/1000.

## Target

<b>Function</b>	Serine/threonine kinase that may play a role in mediating the growth-factor and stress induced activation of the transcription factor CREB.
<b>Tissue specificity</b>	Expressed in many tissues, highest levels in skeletal muscle.
<b>Involvement in disease</b>	Defects in RPS6KA3 are the cause of Coffin-Lowry syndrome (CLS) [MIM:303600]; an X-linked dominant disorder characterized by severe mental retardation with facial and digital dysmorphisms, and progressive skeletal deformations.
<b>Sequence similarities</b>	Belongs to the protein kinase superfamily. AGC Ser/Thr protein kinase family. S6 kinase subfamily. Contains 1 AGC-kinase C-terminal domain. Contains 2 protein kinase domains.
<b>Post-translational modifications</b>	Autophosphorylated on Ser-386, as part of the activation process. Ser-227 phosphorylation promotes Ser-386 phosphorylation and leads to basal activation. Full activation by growth factors requires additional phosphorylation on Ser-369.

## Images

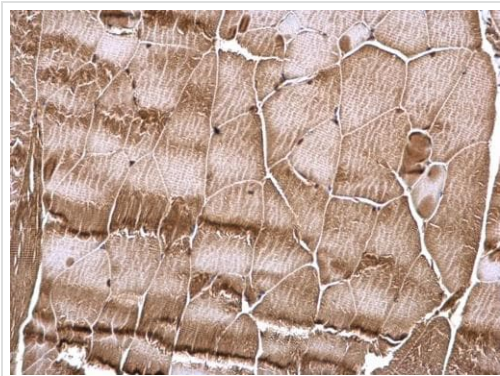


Western blot - Anti-Rsk 2 / MAPKAP Kinase 1b antibody (ab226920)

Anti-Rsk 2 / MAPKAP Kinase 1b antibody (ab226920) at 1/1000 dilution + HepG2 (human liver hepatocellular carcinoma cell line) whole cell extract at 30  $\mu$ g

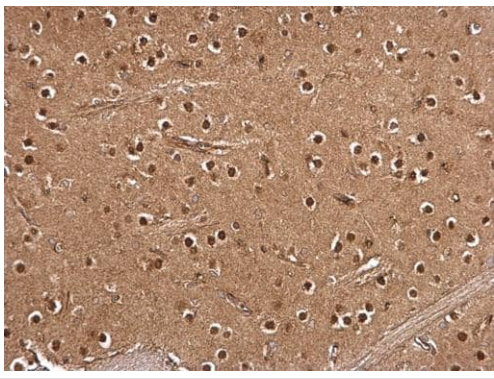
**Predicted band size:** 84 kDa

7.5% SDS-PAGE gel.



Immunohistochemistry (Formalin/PFA-fixed paraffin-embedded sections) - Anti-Rsk 2 / MAPKAP Kinase 1b antibody (ab226920)

Paraffin-embedded mouse muscle tissue stained for Rsk 2 / MAPKAP Kinase 1b using ab226920 at 1/500 dilution in immunohistochemical analysis.



Immunohistochemistry (Formalin/PFA-fixed paraffin-embedded sections) - Anti-Rsk 2 / MAPKAP Kinase 1b antibody (ab226920)

Paraffin-embedded rat middle brain tissue stained for Rsk 2 / MAPKAP Kinase 1b using ab226920 at 1/500 dilution in immunohistochemical analysis.

**Please note:** All products are "FOR RESEARCH USE ONLY. NOT FOR USE IN DIAGNOSTIC PROCEDURES"

### **Our Abpromise to you: Quality guaranteed and expert technical support**

---

- Replacement or refund for products not performing as stated on the datasheet
- Valid for 12 months from date of delivery
- Response to your inquiry within 24 hours
- We provide support in Chinese, English, French, German, Japanese and Spanish
- Extensive multi-media technical resources to help you
- We investigate all quality concerns to ensure our products perform to the highest standards

If the product does not perform as described on this datasheet, we will offer a refund or replacement. For full details of the Abpromise, please visit <https://www.abcam.com/abpromise> or contact our technical team.

### **Terms and conditions**

---

- Guarantee only valid for products bought direct from Abcam or one of our authorized distributors