

Product datasheet

Anti-RSPO1 antibody ab106556

1 References 6 Images

Overview

Product name	Anti-RSPO1 antibody
Description	Rabbit polyclonal to RSPO1
Host species	Rabbit
Specificity	At least three isoforms of RSPO1 are known to exist; ab106556 will detect the largest and smallest isoforms. ab106556 will not cross-react with other RSPO family members.
Tested applications	Suitable for: WB, IHC-P
Species reactivity	Reacts with: Mouse, Human
Immunogen	Synthetic peptide corresponding to Human RSPO1 (N terminal). Database link: Q2MKA7
Positive control	IHC-P: Human spleen and heart tissue. WB: Human spleen tissue, heart and Daudi cell lysate. Mouse 3T3/NIH cell lysate.
General notes	<p>Antibodies should not be exposed to prolonged high temperatures.</p> <p>The Life Science industry has been in the grips of a reproducibility crisis for a number of years. Abcam is leading the way in addressing this with our range of recombinant monoclonal antibodies and knockout edited cell lines for gold-standard validation. Please check that this product meets your needs before purchasing.</p> <p>If you have any questions, special requirements or concerns, please send us an inquiry and/or contact our Support team ahead of purchase. Recommended alternatives for this product can be found below, along with publications, customer reviews and Q&As</p>

Properties

Form	Liquid
Storage instructions	Shipped at 4°C. Store at +4°C short term (1-2 weeks). Upon delivery aliquot. Store at -20°C long term. Avoid freeze / thaw cycle. Please see notes section.
Storage buffer	pH: 7.2 Preservative: 0.02% Sodium azide Constituent: PBS
Purity	Immunogen affinity purified
Clonality	Polyclonal

Isotype

IgG

Applications

The Abpromise guarantee

Our [Abpromise guarantee](#) covers the use of ab106556 in the following tested applications.

The application notes include recommended starting dilutions; optimal dilutions/concentrations should be determined by the end user.

Application	Abreviews	Notes
WB		Use a concentration of 1 - 2 µg/ml. Predicted molecular weight: 29 kDa.
IHC-P		Use a concentration of 2.5 - 20 µg/ml.

Target

Function

Activator of the beta-catenin signaling cascade, leading to TCF-dependent gene activation. Acts both in the canonical Wnt/beta-catenin-dependent pathway, possibly via a direct interaction with Wnt proteins, and in a Wnt-independent beta catenin pathway through a receptor signaling pathway that may not use frizzled/LRP receptors. Acts as a ligand for frizzled FZD8 and LRP6. May negatively regulate the TGF-beta pathway. Has a essential roles in ovary determination.

Tissue specificity

Abundantly expressed in adrenal glands, ovary, testis, thyroid and trachea but not in bone marrow, spinal cord, stomach, leukocytes colon, small intestine, prostate, thymus and spleen.

Involvement in disease

Defects in RSPO1 are the cause of palmoplantar keratoderma with squamous cell carcinoma of skin and sex reversal (PKKSCC) [MIM:610644]. This recessive syndrome is characterized by XX (female to male) SRY-independent sex reversal, palmoplantar hyperkeratosis and predisposition to squamous cell carcinoma of the skin.

Sequence similarities

Belongs to the R-spondin family.
Contains 2 FU (furin-like) repeats.
Contains 1 TSP type-1 domain.

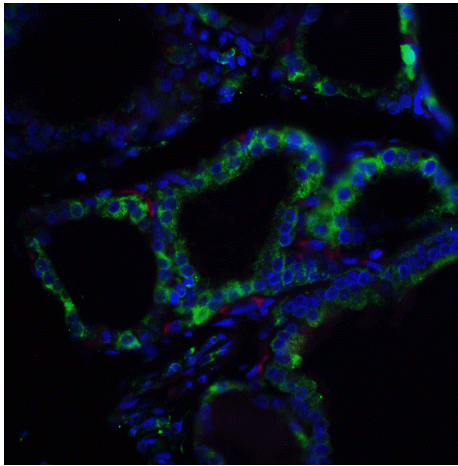
Domain

The FU repeats are required for activation and stabilization of beta-catenin.

Cellular localization

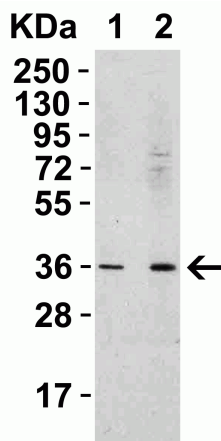
Secreted.

Images



Immunohistochemistry of 4% paraformaldehyde-fixed human spleen labeling RSPO1 with 5171 at 5 $\mu\text{g}/\text{mL}$, followed by goat anti-rabbit IgG secondary antibody at 1/500 dilution (green) with Phalloidin staining (red) and DAPI staining (blue).

Immunohistochemistry (Formalin/PFA-fixed paraffin-embedded sections) - Anti-RSPO1 antibody (ab106556)



Lane 1 : Anti-RSPO1 antibody (ab106556) at 0.5 μg

Lane 2 : Anti-RSPO1 antibody (ab106556) at 1 μg

All lanes : Human spleen lysate

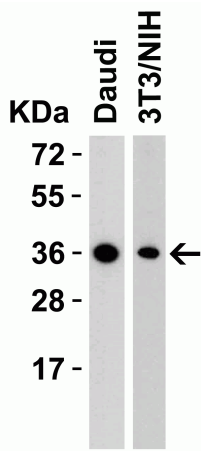
Lysates/proteins at 15 μg per lane.

Secondary

All lanes : Goat anti-rabbit IgG HRP conjugate at 1/10000 dilution

Predicted band size: 29 kDa

Western blot - Anti-RSPO1 antibody (ab106556)



Western blot - Anti-RSPO1 antibody (ab106556)

All lanes : Anti-RSPO1 antibody (ab106556) at 2 µg

Lane 1 : Daudi cell lysate

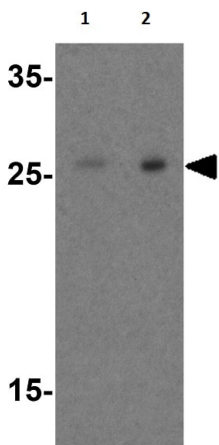
Lane 2 : 3T3/NIH cell lysate

Lysates/proteins at 15 µg per lane.

Secondary

All lanes : Goat anti-rabbit IgG HRP conjugate at 1/10000 dilution

Predicted band size: 29 kDa



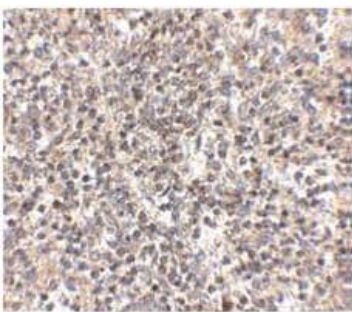
Western blot - Anti-RSPO1 antibody (ab106556)

Lane 1 : Anti-RSPO1 antibody (ab106556) at 1 µg/ml

Lane 2 : Anti-RSPO1 antibody (ab106556) at 2 µg/ml

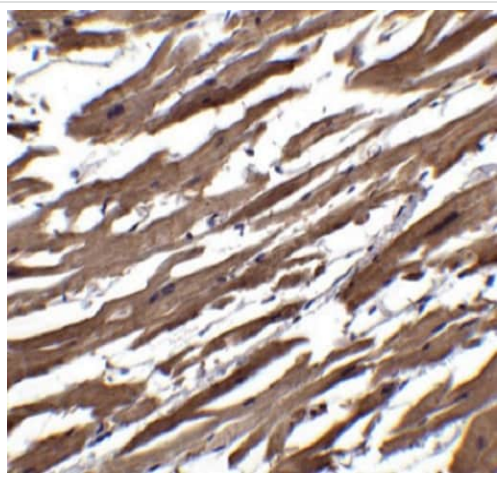
All lanes : Human heart tissue lysate

Predicted band size: 29 kDa



Immunohistochemistry (Formalin/PFA-fixed paraffin-embedded sections) - Anti-RSPO1 antibody (ab106556)

Immunohistochemical analysis of PFA fixed paraffin embedded Human spleen tissue sections labelling RSPO1 with ab106556, at 2.5 µg/mL.



Immunohistochemical analysis of PFA fixed paraffin embedded Human heart tissue sections labelling RSPO1 with ab106556, at 2.5 µg/mL.

Immunohistochemistry (Formalin/PFA-fixed paraffin-embedded sections) - Anti-RSPO1 antibody (ab106556)

Please note: All products are "FOR RESEARCH USE ONLY. NOT FOR USE IN DIAGNOSTIC PROCEDURES"

Our Abpromise to you: Quality guaranteed and expert technical support

- Replacement or refund for products not performing as stated on the datasheet
- Valid for 12 months from date of delivery
- Response to your inquiry within 24 hours

- We provide support in Chinese, English, French, German, Japanese and Spanish
- Extensive multi-media technical resources to help you
- We investigate all quality concerns to ensure our products perform to the highest standards

If the product does not perform as described on this datasheet, we will offer a refund or replacement. For full details of the Abpromise, please visit <https://www.abcam.com/abpromise> or contact our technical team.

Terms and conditions

- Guarantee only valid for products bought direct from Abcam or one of our authorized distributors