




Product datasheet

Anti-RSUME antibody ab128285

1 Image

Overview

Product name	Anti-RSUME antibody
Description	Rabbit polyclonal to RSUME
Host species	Rabbit
Tested applications	Suitable for: WB
Species reactivity	Reacts with: Human Predicted to work with: Rat, Guinea pig, Cat, Dog 
Immunogen	Synthetic peptide corresponding to Human RSUME aa 92-141 (internal sequence). Sequence: ESLLSEPMVHELVLWQQNLRHILSQPETGSGSEKCTF STSTTMDDGLWI Database link: NP_056300  Run BLAST with  Run BLAST with
Positive control	293T cell lysate.
General notes	Previously labelled as RWDD3.

Properties

Form	Liquid
Storage instructions	Shipped at 4°C. Upon delivery aliquot and store at -20°C. Avoid repeated freeze / thaw cycles.
Storage buffer	Preservative: 0.09% Sodium azide Constituents: 2% Sucrose, PBS
Purity	Immunogen affinity purified
Clonality	Polyclonal
Isotype	IgG

Applications

Our [Abpromise guarantee](#) covers the use of **ab128285** in the following tested applications.

The application notes include recommended starting dilutions; optimal dilutions/concentrations should be determined by the end user.

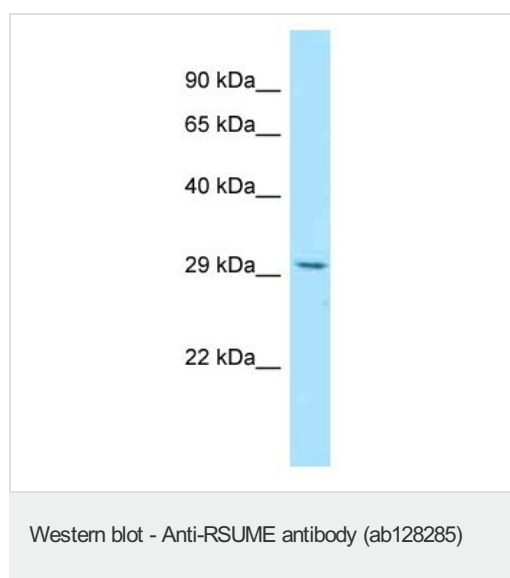
Application	Abreviews	Notes
-------------	-----------	-------

WB Use a concentration of 1 µg/ml. Predicted molecular weight: 31 kDa. Good results were obtained when blocked with 5% non-fat dry milk in 0.05% PBS-T.

Target

Function	Enhances the sumoylation of a number of proteins including HIF1A, PIAS and I-kappa-B, through direct interaction with UBC9. Has no effect on ubiquitination.
Tissue specificity	Expressed in a wide number of tissues with highest expression in cerebellum, pituitary, heart, kidney, liver, stomach, pancreas, prostate and spleen. Low levels in thalamus, spinal cord, esophagus, thymus, lung and peripheral blood leukocytes.
Sequence similarities	Contains 1 RWD domain.
Domain	The RWD domain is required for the sumoylation enhancement activity.
Cellular localization	Nucleus. Cytoplasm. Colocalizes with UBC9/UBE2I in nuclear spots.

Images



Anti-RSUME antibody (ab128285) at 1 µg/ml + 293T cell lysate at 10 µg

Developed using the ECL technique.

Predicted band size: 31 kDa

Gel concentration: 12%.

Please note: All products are "FOR RESEARCH USE ONLY. NOT FOR USE IN DIAGNOSTIC PROCEDURES"

Our Abpromise to you: Quality guaranteed and expert technical support

- Replacement or refund for products not performing as stated on the datasheet
- Valid for 12 months from date of delivery
- Response to your inquiry within 24 hours
- We provide support in Chinese, English, French, German, Japanese and Spanish
- Extensive multi-media technical resources to help you

- We investigate all quality concerns to ensure our products perform to the highest standards

If the product does not perform as described on this datasheet, we will offer a refund or replacement. For full details of the Abpromise, please visit <https://www.abcam.com/abpromise> or contact our technical team.

Terms and conditions

- Guarantee only valid for products bought direct from Abcam or one of our authorized distributors