

Product datasheet

RuBi-Glutamate, caged-glutamate compound
ab120408

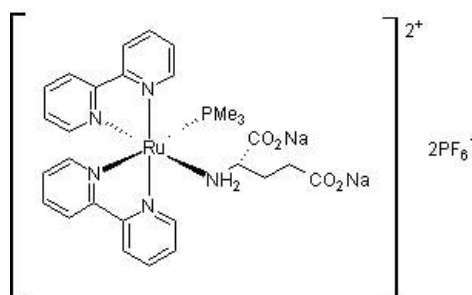
Overview

Product name	RuBi-Glutamate, caged-glutamate compound
Description	Novel caged-glutamate compound, uncaged by visible light
Biological description	Novel caged-glutamate compound based on ruthenium photochemistry. Excited with visible wavelengths and releases glutamate after one- or two-photon excitation. It has high quantum efficiency and can be used at low concentrations. Enables the photoactivation of neuronal dendrites and circuits with visible or two-photon light sources, achieving single cell, or even single spine, precision. Also available in simple stock solutions (ab146718) - add 1 ml of water to get an exact, ready-to-use concentration.

General notes	RuBi-Glutamate is light sensitive and it is recommended that the compound is protected from light. Sold under license from Columbia University; Patent Pending.
----------------------	--

CAS Number 2417096-44-5

Chemical structure



Properties

Chemical name	(Bis(2,2'-bipyridine- <i>N,N'</i>)trimethylphosphine)-(S)-1-aminopropane-1,3-dicarboxylic acid ruthenium(2+) complex sodium hexafluorophosphate salt
Molecular weight	948.56
Molecular formula	C ₂₈ H ₃₃ N ₅ O ₄ PRu.Na(PF ₆) ₂
PubChem identifier	90488860
Storage instructions	Store at -20°C. It is important to note that this product is reported to be light sensitive. Store In the

Dark. Store under desiccating conditions.

Solubility overview

Soluble in water to 20 mM

Handling

Wherever possible, you should prepare and use solutions on the same day. However, if you need to make up stock solutions in advance, we recommend that you store the solution as aliquots in tightly sealed vials at -20°C. Generally, these will be useable for up to one month. Before use, and prior to opening the vial we recommend that you allow your product to equilibrate to room temperature for at least 1 hour.

Need more advice on solubility, usage and handling? Please visit our [frequently asked questions \(FAQ\) page](#) for more details.

SMILES

CP(C)C.C1=CC=NC(=C1)C2=CC=CC=N2.C1=CC=NC(=C1)C2=CC=CC=N2.C(CC(=O)[O-])C(C(=O)[O-])N.F[P-](F)(F)(F)F.F[P-](F)(F)(F)F.[Na+].[Na+].[Ru+2]

Source

Synthetic

Please note: All products are "FOR RESEARCH USE ONLY. NOT FOR USE IN DIAGNOSTIC PROCEDURES, NOT FOR USE IN HUMANS"

Our Abpromise to you: Quality guaranteed and expert technical support

- Replacement or refund for products not performing as stated on the datasheet
- Valid for 12 months from date of delivery
- Response to your inquiry within 24 hours
- We provide support in Chinese, English, French, German, Japanese and Spanish
- Extensive multi-media technical resources to help you
- We investigate all quality concerns to ensure our products perform to the highest standards

If the product does not perform as described on this datasheet, we will offer a refund or replacement. For full details of the Abpromise, please visit <https://www.abcam.com/abpromise> or contact our technical team.

Terms and conditions

- Guarantee only valid for products bought direct from Abcam or one of our authorized distributors
- Abcam biochemicals are novel compounds and we have not tested their biological activity in house. Please use the literature to identify how to use these products effectively. If you require further assistance please contact the scientific support team