


Product datasheet

Anti-Rubicon/Baron antibody ab92388

★★★★☆ 6 Abreviews 6 References 2 Images

Overview

| | |
|----------------------------|------------------------------------------------------------------------------------------------------------------------------------------------------------------------------------|
| Product name | Anti-Rubicon/Baron antibody |
| Description | Rabbit polyclonal to Rubicon/Baron |
| Host species | Rabbit |
| Tested applications | Suitable for: WB, IP |
| Species reactivity | Reacts with: Human Predicted to work with: Chimpanzee, Rhesus monkey, Gorilla  |
| Immunogen | Synthetic peptide corresponding to Human Rubicon/Baron aa 922-972. Database link: NP_055502.1 |
| General notes | This product was previously labelled as Rubicon |

Reproducibility is key to advancing scientific discovery and accelerating scientists' next breakthrough.

Abcam is leading the way with our range of recombinant antibodies, knockout-validated antibodies and knockout cell lines, all of which support improved reproducibility.

We are also planning to innovate the way in which we present recommended applications and species on our product datasheets, so that only applications & species that have been tested in our own labs, our suppliers or by selected trusted collaborators are covered by our Abpromise™ guarantee.

In preparation for this, we have started to update the applications & species that this product is Abpromise guaranteed for.

We are also updating the applications & species that this product has been “predicted to work with,” however this information is not covered by our Abpromise guarantee.

Applications & species from publications and Abreviews that have not been tested in our own labs or in those of our suppliers are not covered by the Abpromise guarantee.

Please check that this product meets your needs before purchasing. If you have any questions, special requirements or concerns, please send us an inquiry and/or contact our Support team ahead of purchase. Recommended alternatives for this product can be found below, as well as customer reviews and Q&As.

Properties

| | |
|-----------------------------|---------------------------------------------------------------------------------------|
| Form | Liquid |
| Storage instructions | Shipped at 4°C. Upon delivery aliquot and store at -20°C. Avoid freeze / thaw cycles. |
| Storage buffer | pH: 7 Preservative: 0.09% Sodium azide Constituent: Tris citrate/phosphate |
| Purity | Immunogen affinity purified |
| Clonality | Polyclonal |
| Isotype | IgG |

Applications

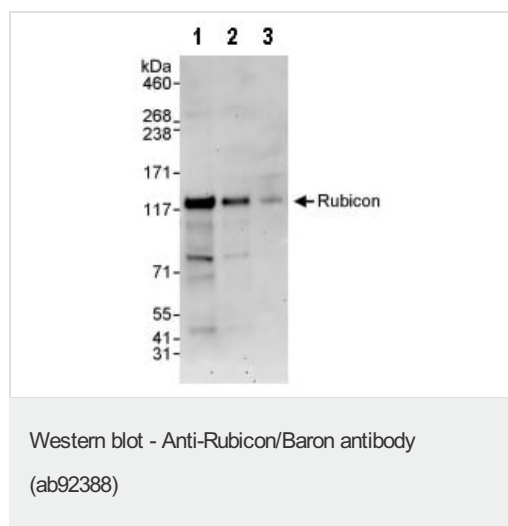
Our [Abpromise guarantee](#) covers the use of **ab92388** in the following tested applications.

The application notes include recommended starting dilutions; optimal dilutions/concentrations should be determined by the end user.

| Application | Abreviews | Notes |
|-------------|-----------|--------------------------------------------------------|
| WB | ★★★★☆ | 1/2000 - 1/10000. Predicted molecular weight: 109 kDa. |
| IP | | Use at 2-5 µg/mg of lysate. |

Target

Images



All lanes : Anti-Rubicon/Baron antibody (ab92388) at 0.4 µg/ml

Lane 1 : HeLa whole cell lysate at 50 µg

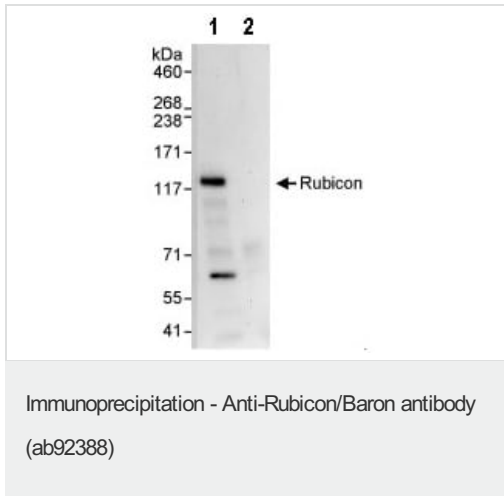
Lane 2 : HeLa whole cell lysate at 15 µg

Lane 3 : HeLa whole cell lysate at 5 µg

Developed using the ECL technique.

Predicted band size: 109 kDa

Exposure time: 3 minutes



Sample: HeLa whole cell lysate (1 mg for IP, 20% of IP loaded).
Antibodies: ab92388 used for WB 1 µg/ml (lane 1) and used for IP at 3 µg/mg lysate. Lane 2: control IgG.
Detection: chemiluminescence with exposure time of 30 seconds.

Please note: All products are "FOR RESEARCH USE ONLY. NOT FOR USE IN DIAGNOSTIC PROCEDURES"

Our Abpromise to you: Quality guaranteed and expert technical support

- Replacement or refund for products not performing as stated on the datasheet
- Valid for 12 months from date of delivery
- Response to your inquiry within 24 hours
- We provide support in Chinese, English, French, German, Japanese and Spanish
- Extensive multi-media technical resources to help you
- We investigate all quality concerns to ensure our products perform to the highest standards

If the product does not perform as described on this datasheet, we will offer a refund or replacement. For full details of the Abpromise, please visit <https://www.abcam.com/abpromise> or contact our technical team.

Terms and conditions

- Guarantee only valid for products bought direct from Abcam or one of our authorized distributors