

## Product datasheet

# Anti-RUFY1 antibody ab241080

[2 Images](#)

### Overview

---

<b>Product name</b>	Anti-RUFY1 antibody
<b>Description</b>	Rabbit polyclonal to RUFY1
<b>Host species</b>	Rabbit
<b>Tested applications</b>	<b>Suitable for:</b> WB, IP
<b>Species reactivity</b>	<b>Reacts with:</b> Mouse, Human
<b>Immunogen</b>	Synthetic peptide within Human RUFY1 aa 658-708. The exact sequence is proprietary. Database link: <a href="#">Q96T51</a>
<b>Positive control</b>	WB: HeLa, HEK-293T, Jurkat, TCMK-1 and NIH/3T3 whole cell lysate. IP: RUFY1 IP in HeLa whole cell lysate.
<b>General notes</b>	<p>Reproducibility is key to advancing scientific discovery and accelerating scientists' next breakthrough.</p> <p>Abcam is leading the way with our range of recombinant antibodies, knockout-validated antibodies and knockout cell lines, all of which support improved reproducibility.</p> <p>We are also planning to innovate the way in which we present recommended applications and species on our product datasheets, so that only applications &amp; species that have been tested in our own labs, our suppliers or by selected trusted collaborators are covered by our Abpromise™ guarantee.</p> <p>In preparation for this, we have started to update the applications &amp; species that this product is Abpromise guaranteed for.</p> <p>We are also updating the applications &amp; species that this product has been "predicted to work with," however this information is not covered by our Abpromise guarantee.</p> <p>Applications &amp; species from publications and Abreviews that have not been tested in our own labs or in those of our suppliers are not covered by the Abpromise guarantee.</p> <p>Please check that this product meets your needs before purchasing. If you have any questions, special requirements or concerns, please send us an inquiry and/or contact our Support team ahead of purchase. Recommended alternatives for this product can be found below, as well as customer reviews and Q&amp;As.</p>

### Properties

---

<b>Form</b>	Liquid
-------------	--------

<b>Storage instructions</b>	Shipped at 4°C. Store at +4°C short term (1-2 weeks). Upon delivery aliquot. Store at -20°C long term. Avoid freeze / thaw cycle.
<b>Storage buffer</b>	pH: 7 Preservative: 0.09% Sodium azide Constituent: Tris citrate/phosphate
	pH 7 to 8
<b>Purity</b>	Immunogen affinity purified
<b>Clonality</b>	Polyclonal
<b>Isotype</b>	IgG

## Applications

Our [Abpromise guarantee](#) covers the use of **ab241080** in the following tested applications.

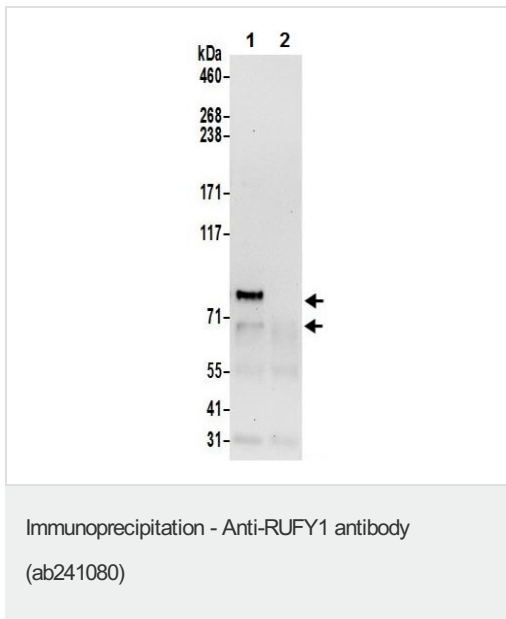
The application notes include recommended starting dilutions; optimal dilutions/concentrations should be determined by the end user.

Application	Abreviews	Notes
WB		1/2000 - 1/10000.
IP		Use at 2-10 µg/mg of lysate.

## Target

<b>Function</b>	Binds phospholipid vesicles containing phosphatidylinositol 3-phosphate and participates in early endosomal trafficking.
<b>Tissue specificity</b>	Broadly expressed, with highest levels in lung, testis, kidney and brain.
<b>Sequence similarities</b>	Contains 1 FYVE-type zinc finger. Contains 1 RUN domain.
<b>Domain</b>	The FYVE-type zinc finger domain mediates interactions with phosphatidylinositol 3-phosphate in membranes of early endosomes and penetrates bilayers. The FYVE domain insertion into PtdIns(3)P-enriched membranes is substantially increased in acidic conditions.
<b>Post-translational modifications</b>	Phosphorylation on Tyr-389 and/or Tyr-400 is required for interaction with BMX and endosomal targeting. Phosphorylated upon DNA damage, probably by ATM or ATR.
<b>Cellular localization</b>	Cytoplasm. Early endosome membrane.

## Images

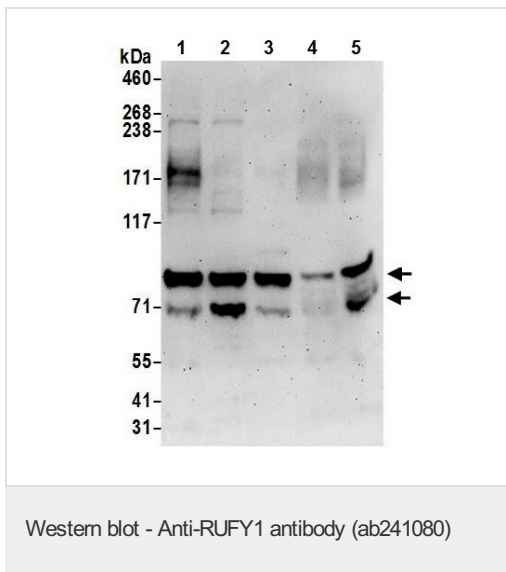


RUFY1 was immunoprecipitated from HeLa (human epithelial cell line from cervix adenocarcinoma) whole cell lysate (1.0 mg per IP reaction; 20% of IP loaded, prepared using NETN lysis buffer) using ab241080 at 6 µg/mL per reaction. Western blot was performed on the immunoprecipitate using ab241080 at 0.4 µg/mL.

**Lane 1:** ab241080 IP in HeLa whole cell lysate.

**Lane 2:** Control IgG.

Detection: Chemiluminescence with an exposure time of 30 seconds.



**All lanes :** Anti-RUFY1 antibody (ab241080) at 0.1 µg/ml

**Lane 1 :** HeLa (human epithelial cell line from cervix adenocarcinoma) whole cell lysate

**Lane 2 :** HEK-293T (human epithelial cell line from embryonic kidney transformed with large T antigen) whole cell lysate

**Lane 3 :** Jurkat (human T cell leukemia cell line from peripheral blood) whole cell lysate

**Lane 4 :** TCMK-1 (Mouse kidney epithelial cell line) whole cell lysate

**Lane 5 :** NIH/3T3 (mouse embryo fibroblast cell line) whole cell lysate

Lysates/proteins at 50 µg per lane.

Developed using the ECL technique.

**Exposure time:** 3 minutes

Lysates prepared using NETN lysis buffer.

**Please note:** All products are "FOR RESEARCH USE ONLY. NOT FOR USE IN DIAGNOSTIC PROCEDURES"

## **Our Abpromise to you: Quality guaranteed and expert technical support**

---

- Replacement or refund for products not performing as stated on the datasheet
- Valid for 12 months from date of delivery
- Response to your inquiry within 24 hours
  
- We provide support in Chinese, English, French, German, Japanese and Spanish
- Extensive multi-media technical resources to help you
- We investigate all quality concerns to ensure our products perform to the highest standards

If the product does not perform as described on this datasheet, we will offer a refund or replacement. For full details of the Abpromise, please visit <https://www.abcam.com/abpromise> or contact our technical team.

## **Terms and conditions**

---

- Guarantee only valid for products bought direct from Abcam or one of our authorized distributors