

Product datasheet

Anti-RUNX1 / AML1 + RUNX3 + RUNX2 antibody [EPR3098] ab133261

Recombinant RabMAb

[1 Abreviews](#) [1 References](#) [9 Images](#)

Overview

Product name	Anti-RUNX1 / AML1 + RUNX3 + RUNX2 antibody [EPR3098]
Description	Rabbit monoclonal [EPR3098] to RUNX1 / AML1 + RUNX3 + RUNX2
Host species	Rabbit
Specificity	The immunogen of this antibody is 100% homologous to mouse RUNX2 sequence.
Tested applications	Suitable for: WB, IHC-P Unsuitable for: Flow Cyt, ICC/IF or IP
Species reactivity	Reacts with: Mouse, Human
Immunogen	Synthetic peptide within Human RUNX1/ AML1 aa 150-250. The exact sequence is proprietary. Database link: Q01196
Positive control	Molt 4 cell lysate, Human fetal thymus tissue lysate, Mouse thymus tissue lysate, Human tonsil tissue.
General notes	Rat: We have preliminary internal testing data to indicate this antibody may not react with this species. Please contact us for more information.

This product is a recombinant monoclonal antibody, which offers several advantages including:

- High batch-to-batch consistency and reproducibility
- Improved sensitivity and specificity
- Long-term security of supply
- Animal-free production

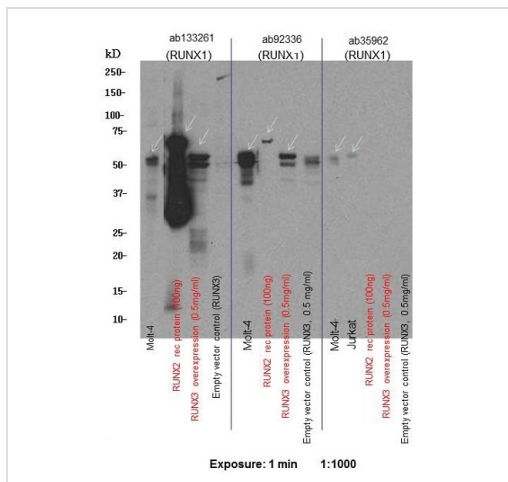
For more information [see here](#).

Our RabMAb[®] technology is a patented hybridoma-based technology for making rabbit monoclonal antibodies. For details on our patents, please refer to [RabMAb[®] patents](#).

Reproducibility is key to advancing scientific discovery and accelerating scientists' next breakthrough.

Abcam is leading the way with our range of recombinant antibodies, knockout-validated antibodies and knockout cell lines, all of which support improved reproducibility.

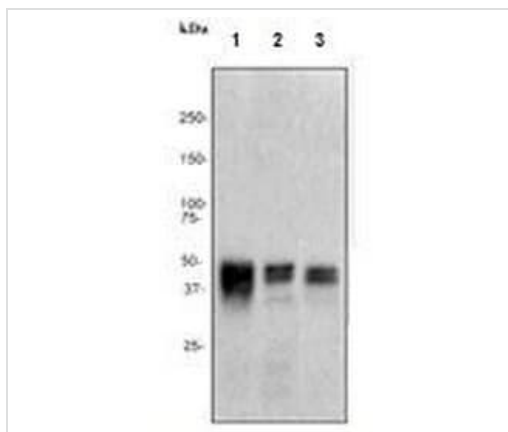
We are also planning to innovate the way in which we present recommended applications and species on our product datasheets, so that only applications & species that have been tested in



Western blot - Anti-RUNX1 / AML1 + RUNX3 + RUNX2 antibody [EPR3098] (ab133261)

RUNX2 recombinant protein full length, with N-terminal HIS tag, expressed in E.Coli.

RUNX3 overexpression and empty vector control lysates created in HEK293T cells. The protein contains a C-terminal DDK tag.



Western blot - Anti-RUNX1 / AML1 + RUNX3 + RUNX2 antibody [EPR3098] (ab133261)

All lanes : Anti-RUNX1 / AML1 + RUNX3 + RUNX2 antibody [EPR3098] (ab133261) at 1/1000 dilution

Lane 1 : Molt 4 cell lysate

Lane 2 : Human fetal thymus lysate

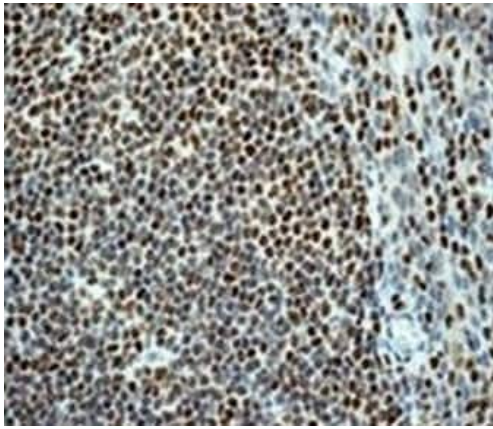
Lane 3 : Mouse thymus lysate

Lysates/proteins at 10 µg per lane.

Secondary

All lanes : Goat anti-rabbit HRP conjugated antibody at 1/2000 dilution

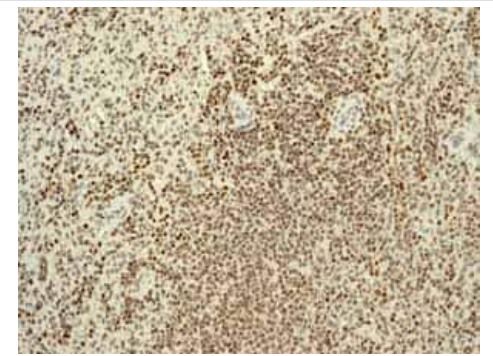
Predicted band size: 48 kDa



Immunohistochemistry (Formalin/PFA-fixed paraffin-embedded sections) - Anti-RUNX1 / AML1 + RUNX3 + RUNX2 antibody [EPR3098] (ab133261)

Immunohistochemical analysis of paraffin embedded Human tonsil tissue labelling RUNX1 / AML1 with ab133261 at 1/100.

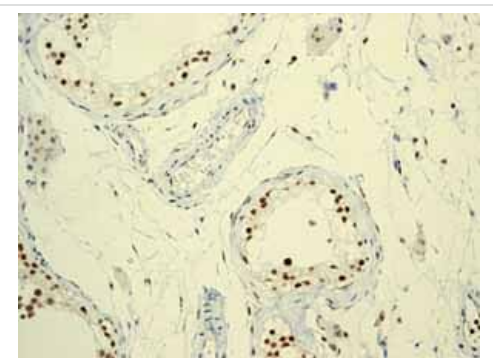
Perform heat mediated antigen retrieval with citrate buffer pH 6 before commencing with IHC staining protocol.



Immunohistochemistry (Formalin/PFA-fixed paraffin-embedded sections) - Anti-RUNX1 / AML1 + RUNX3 + RUNX2 antibody [EPR3098] (ab133261)

Immunohistochemical analysis of paraffin embedded normal Human spleen tissue using ab133261 showing +ve staining.

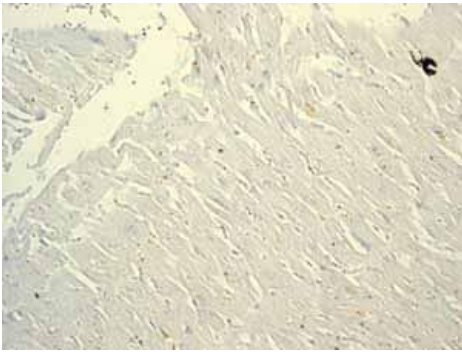
Perform heat mediated antigen retrieval with citrate buffer pH 6 before commencing with IHC staining protocol.



Immunohistochemistry (Formalin/PFA-fixed paraffin-embedded sections) - Anti-RUNX1 / AML1 + RUNX3 + RUNX2 antibody [EPR3098] (ab133261)

Immunohistochemical analysis of paraffin embedded normal Human testis tissue using ab133261 showing +ve staining.

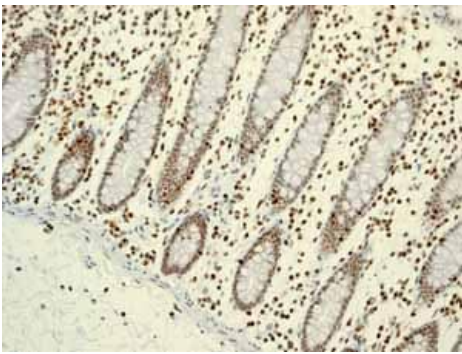
Perform heat mediated antigen retrieval with citrate buffer pH 6 before commencing with IHC staining protocol.



Immunohistochemistry (Formalin/PFA-fixed paraffin-embedded sections) - Anti-RUNX1 / AML1 + RUNX3 + RUNX2 antibody [EPR3098] (ab133261)

Immunohistochemical analysis of paraffin embedded normal Human heart tissue using ab133261 showing -ve staining.

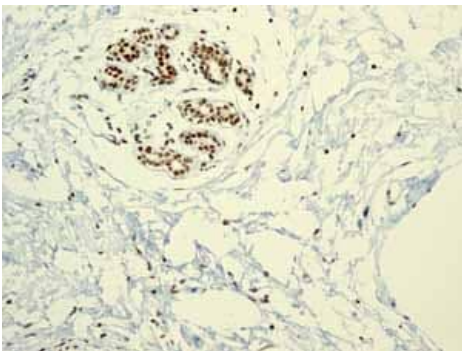
Perform heat mediated antigen retrieval with citrate buffer pH 6 before commencing with IHC staining protocol.



Immunohistochemistry (Formalin/PFA-fixed paraffin-embedded sections) - Anti-RUNX1 / AML1 + RUNX3 + RUNX2 antibody [EPR3098] (ab133261)

Immunohistochemical analysis of paraffin embedded normal Human colon tissue using ab133261 showing +ve staining.

Perform heat mediated antigen retrieval with citrate buffer pH 6 before commencing with IHC staining protocol.



Immunohistochemistry (Formalin/PFA-fixed paraffin-embedded sections) - Anti-RUNX1 / AML1 + RUNX3 + RUNX2 antibody [EPR3098] (ab133261)

Immunohistochemical analysis of paraffin embedded normal Human breast tissue using ab133261 showing +ve staining.

Perform heat mediated antigen retrieval with citrate buffer pH 6 before commencing with IHC staining protocol.

Why choose a recombinant antibody?



Research with confidence
Consistent and reproducible results



Long-term and scalable supply
Recombinant technology



Success from the first experiment
Confirmed specificity



Ethical standards compliant
Animal-free production

Anti-RUNX1 / AML1 + RUNX3 + RUNX2 antibody
[EPR3098] (ab133261)

Please note: All products are "FOR RESEARCH USE ONLY. NOT FOR USE IN DIAGNOSTIC PROCEDURES"

Our Abpromise to you: Quality guaranteed and expert technical support

- Replacement or refund for products not performing as stated on the datasheet
- Valid for 12 months from date of delivery
- Response to your inquiry within 24 hours
- We provide support in Chinese, English, French, German, Japanese and Spanish
- Extensive multi-media technical resources to help you
- We investigate all quality concerns to ensure our products perform to the highest standards

If the product does not perform as described on this datasheet, we will offer a refund or replacement. For full details of the Abpromise, please visit <https://www.abcam.com/abpromise> or contact our technical team.

Terms and conditions

- Guarantee only valid for products bought direct from Abcam or one of our authorized distributors