

Product datasheet

Anti-RUTBC1 antibody ab139811

2 Images

Overview

<b>Product name</b>	Anti-RUTBC1 antibody
<b>Description</b>	Rabbit polyclonal to RUTBC1
<b>Host species</b>	Rabbit
<b>Specificity</b>	Multiple isoforms of RUTBC1 are known to exist. ab139811 is predicted to not cross react with other SGSM family proteins.
<b>Tested applications</b>	<b>Suitable for:</b> ICC/IF, WB
<b>Species reactivity</b>	<b>Reacts with:</b> Human
<b>Immunogen</b>	Synthetic peptide corresponding to Human RUTBC1 (internal sequence). Database link: <a href="#">NP_055668</a>
<b>Positive control</b>	Human cerebellum tissue lysate.
<b>General notes</b>	This product was previously labelled as SGSM2

The Life Science industry has been in the grips of a reproducibility crisis for a number of years. Abcam is leading the way in addressing this with our range of recombinant monoclonal antibodies and knockout edited cell lines for gold-standard validation. Please check that this product meets your needs before purchasing.

If you have any questions, special requirements or concerns, please send us an inquiry and/or contact our Support team ahead of purchase. Recommended alternatives for this product can be found below, along with publications, customer reviews and Q&As

Properties

<b>Form</b>	Liquid
<b>Storage instructions</b>	Shipped at 4°C. Upon delivery aliquot and store at -20°C. Avoid repeated freeze / thaw cycles.
<b>Storage buffer</b>	pH: 7.2 Preservative: 0.02% Sodium azide Constituent: 99% PBS
<b>Purity</b>	Immunogen affinity purified
<b>Clonality</b>	Polyclonal
<b>Isotype</b>	IgG

## Applications

**The Abpromise guarantee** Our [Abpromise guarantee](#) covers the use of ab139811 in the following tested applications.

The application notes include recommended starting dilutions; optimal dilutions/concentrations should be determined by the end user.

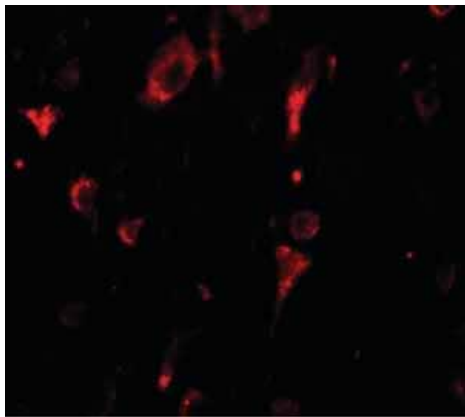
Application	Abreviews	Notes
ICC/IF		Use a concentration of 20 µg/ml.
WB		Use a concentration of 1 µg/ml. Predicted molecular weight: 118 kDa.

## Target

**Tissue specificity** Widely expressed.

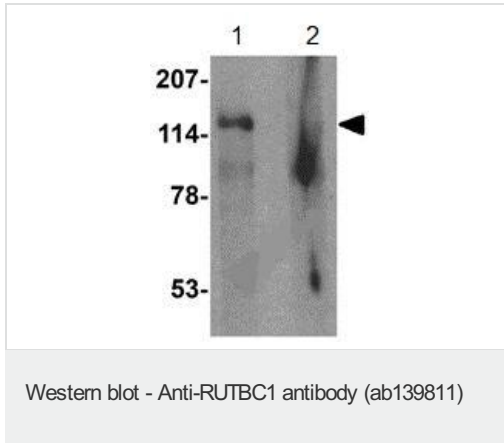
**Sequence similarities** Belongs to the RUTBC family.  
Contains 1 Rab-GAP TBC domain.  
Contains 1 RUN domain.

## Images



Immunofluorescence of RUTBC1 in Human brain tissue with ab139811 at 20 ug/mL.

Immunocytochemistry/ Immunofluorescence - Anti-RUTBC1 antibody (ab139811)



**All lanes :** Anti-RUTBC1 antibody (ab139811) at 1 µg/ml

**Lane 1 :** Human cerebellum tissue lysate

**Lane 2 :** Human cerebellum tissue lysate with blocking peptide

Lysates/proteins at 15 µg per lane.

**Predicted band size:** 118 kDa

**Please note:** All products are "FOR RESEARCH USE ONLY. NOT FOR USE IN DIAGNOSTIC PROCEDURES"

### Our Abpromise to you: Quality guaranteed and expert technical support

---

- Replacement or refund for products not performing as stated on the datasheet
- Valid for 12 months from date of delivery
- Response to your inquiry within 24 hours
- We provide support in Chinese, English, French, German, Japanese and Spanish
- Extensive multi-media technical resources to help you
- We investigate all quality concerns to ensure our products perform to the highest standards

If the product does not perform as described on this datasheet, we will offer a refund or replacement. For full details of the Abpromise, please visit <https://www.abcam.com/abpromise> or contact our technical team.

### Terms and conditions

---

- Guarantee only valid for products bought direct from Abcam or one of our authorized distributors