


Product datasheet

Anti-RYBP antibody ab107896

2 Images

Overview

<b>Product name</b>	Anti-RYBP antibody
<b>Description</b>	Rabbit polyclonal to RYBP
<b>Host species</b>	Rabbit
<b>Tested applications</b>	<b>Suitable for:</b> WB, ICC/IF
<b>Species reactivity</b>	<b>Reacts with:</b> Human <b>Predicted to work with:</b> Mouse, Rat, Rabbit, Horse, Cow, Dog, Pig, Monkey, Macaque monkey, Gorilla, Chinese hamster 
<b>Immunogen</b>	Synthetic peptide corresponding to Human RYBP aa 50-150 conjugated to keyhole limpet haemocyanin. (Peptide available as <a href="#">ab126636</a> )
<b>Positive control</b>	This antibody gave a positive signal in the following whole cell lysates: HepG2; K562; A549; JEG3. This antibody gave a positive signal in the following cell lines: HeLa, HepG2, MCF-7 (Methanol fixed), and in HepG2 (Formaldehyde fixed).
<b>General notes</b>	<p>Reproducibility is key to advancing scientific discovery and accelerating scientists' next breakthrough.</p> <p>Abcam is leading the way with our range of recombinant antibodies, knockout-validated antibodies and knockout cell lines, all of which support improved reproducibility.</p> <p>We are also planning to innovate the way in which we present recommended applications and species on our product datasheets, so that only applications &amp; species that have been tested in our own labs, our suppliers or by selected trusted collaborators are covered by our Abpromise™ guarantee.</p> <p>In preparation for this, we have started to update the applications &amp; species that this product is Abpromise guaranteed for.</p> <p>We are also updating the applications &amp; species that this product has been “predicted to work with,” however this information is not covered by our Abpromise guarantee.</p> <p>Applications &amp; species from publications and Abreviews that have not been tested in our own labs or in those of our suppliers are not covered by the Abpromise guarantee.</p> <p>Please check that this product meets your needs before purchasing. If you have any questions, special requirements or concerns, please send us an inquiry and/or contact our Support team ahead of purchase. Recommended alternatives for this product can be found below, as well as customer reviews and Q&amp;As.</p>

## Properties

---

<b>Form</b>	Liquid
<b>Storage instructions</b>	Shipped at 4°C. Store at +4°C short term (1-2 weeks). Upon delivery aliquot. Store at -20°C or -80°C. Avoid freeze / thaw cycle.
<b>Storage buffer</b>	pH: 7.40 Preservative: 0.02% Sodium azide Constituent: PBS  Batches of this product that have a concentration < 1mg/ml may have BSA added as a stabilising agent. If you would like information about the formulation of a specific lot, please contact our scientific support team who will be happy to help.
<b>Purity</b>	Immunogen affinity purified
<b>Clonality</b>	Polyclonal
<b>Isotype</b>	IgG

## Applications

---

Our [Abpromise guarantee](#) covers the use of **ab107896** in the following tested applications.

The application notes include recommended starting dilutions; optimal dilutions/concentrations should be determined by the end user.

Application	Abreviews	Notes
WB		Use a concentration of 1 µg/ml. Detects a band of approximately 28 kDa (predicted molecular weight: 25 kDa).
ICC/IF		Use a concentration of 1 µg/ml.

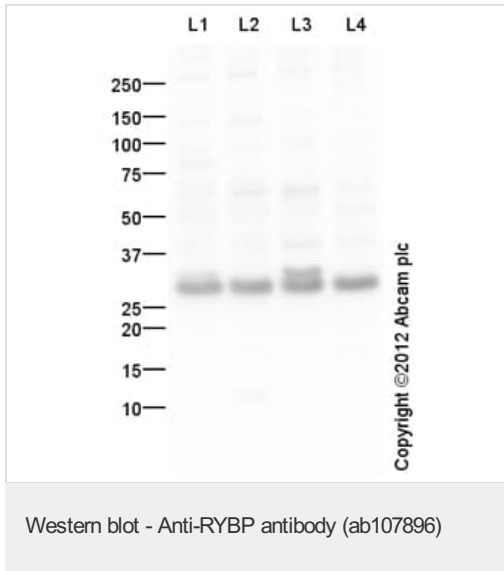
## Target

---

<b>Function</b>	May be implicated in the regulation of the transcription as a repressor of the transcriptional activity of E4TF1. In tumor cell lines, may induce apoptosis.
<b>Tissue specificity</b>	Widely expressed with highest levels in lymphoid tissues and placenta.
<b>Sequence similarities</b>	Contains 1 RanBP2-type zinc finger.
<b>Cellular localization</b>	Nucleus. Cytoplasm. Primarily found in the nucleus.

## Images

---



**All lanes** : Anti-RYBP antibody (ab107896) at 1 µg/ml

**Lane 1** : HepG2 (Human hepatocellular liver carcinoma cell line)  
Whole Cell Lysate

**Lane 2** : K562 (Human erythromyeloblastoid leukemia cell line)  
Whole Cell Lysate

**Lane 3** : A549 (Human lung adenocarcinoma epithelial cell line)  
Whole Cell Lysate

**Lane 4** : JEG-3 (Human placental choriocarcinoma cell line) Whole  
Cell Lysate

Lysates/proteins at 10 µg per lane.

#### Secondary

**All lanes** : Goat Anti-Rabbit IgG H&L (HRP) preadsorbed  
(ab97080) at 1/5000 dilution

Developed using the ECL technique.

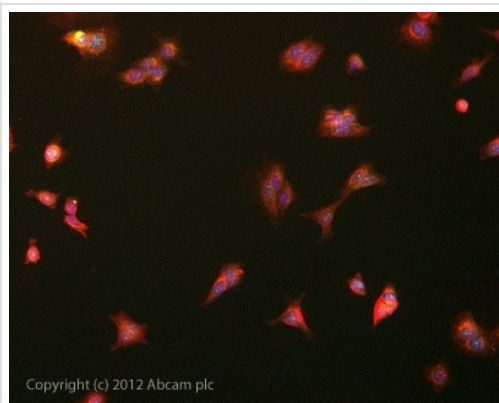
Performed under reducing conditions.

**Predicted band size:** 25 kDa

**Observed band size:** 28 kDa

[why is the actual band size different from the predicted?](#)

**Exposure time:** 30 seconds



Immunocytochemistry/ Immunofluorescence - Anti-RYBP antibody (ab107896)

ICC/IF image of ab107896 stained MCF-7 cells. The cells were 100% methanol fixed (5 min) and then incubated in 1%BSA / 10% normal goat serum / 0.3M glycine in 0.1% PBS-Tween for 1h to permeabilise the cells and block non-specific protein-protein interactions. The cells were then incubated with the antibody ab107896 at 1µg/ml overnight at +4°C. The secondary antibody (green) was DyLight® 488 goat anti- rabbit (ab96899) IgG (H+L) used at a 1/1000 dilution for 1h. Alexa Fluor® 594 WGA was used to label plasma membranes (red) at a 1/200 dilution for 1h. DAPI was used to stain the cell nuclei (blue) at a concentration of 1.43µM. This antibody also gave a positive result in 100% Methanol fixed (5 min) HeLa and HepG2 cells, and in 4% Formaldehyde fixed (10min) HepG2 cells at 1ug/ml.

**Please note:** All products are "FOR RESEARCH USE ONLY. NOT FOR USE IN DIAGNOSTIC PROCEDURES"

### Our Abpromise to you: Quality guaranteed and expert technical support

---

- Replacement or refund for products not performing as stated on the datasheet
- Valid for 12 months from date of delivery
- Response to your inquiry within 24 hours
  
- We provide support in Chinese, English, French, German, Japanese and Spanish
- Extensive multi-media technical resources to help you
- We investigate all quality concerns to ensure our products perform to the highest standards

If the product does not perform as described on this datasheet, we will offer a refund or replacement. For full details of the Abpromise, please visit <https://www.abcam.com/abpromise> or contact our technical team.

### Terms and conditions

---

- Guarantee only valid for products bought direct from Abcam or one of our authorized distributors