

Product datasheet

# Alexa Fluor® 555 Anti-S100 beta antibody [EP1576Y] - Astrocyte Marker ab274881

Recombinant RabMAb

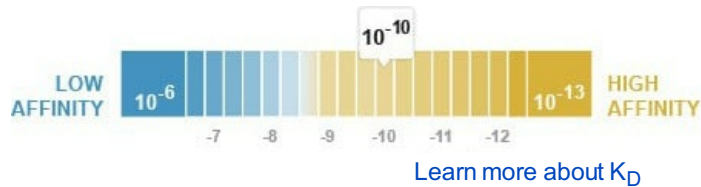
1 Image

Overview

<b>Product name</b>	Alexa Fluor® 555 Anti-S100 beta antibody [EP1576Y] - Astrocyte Marker
<b>Description</b>	Alexa Fluor® 555 Rabbit monoclonal [EP1576Y] to S100 beta - Astrocyte Marker
<b>Host species</b>	Rabbit
<b>Conjugation</b>	Alexa Fluor® 555. Ex: 555nm, Em: 565nm
<b>Tested applications</b>	<b>Suitable for:</b> ICC
<b>Species reactivity</b>	<b>Reacts with:</b> Human
<b>Immunogen</b>	Synthetic peptide within Human S100 beta aa 50 to the C-terminus (C terminal). The exact sequence is proprietary. Database link: <a href="#">P04271</a>
<b>Positive control</b>	ICC: A375 cells.
<b>General notes</b>	<p>This product is a recombinant monoclonal antibody, which offers several advantages including:</p> <ul style="list-style-type: none"> <li>- High batch-to-batch consistency and reproducibility</li> <li>- Improved sensitivity and specificity</li> <li>- Long-term security of supply</li> <li>- Animal-free production</li> </ul> <p>For more information <a href="#">see here</a>.</p> <p>Our RabMAb® technology is a patented hybridoma-based technology for making rabbit monoclonal antibodies. For details on our patents, please refer to <a href="#">RabMAb® patents</a>.</p> <p>Alexa Fluor® is a registered trademark of Molecular Probes, Inc, a Thermo Fisher Scientific Company. The Alexa Fluor® dye included in this product is provided under an intellectual property license from Life Technologies Corporation. As this product contains the Alexa Fluor® dye, the purchase of this product conveys to the buyer the non-transferable right to use the purchased product and components of the product only in research conducted by the buyer (whether the buyer is an academic or for-profit entity). As this product contains the Alexa Fluor® dye the sale of this product is expressly conditioned on the buyer not using the product or its components, or any materials made using the product or its components, in any activity to generate revenue, which may include, but is not limited to use of the product or its components: (i) in manufacturing; (ii) to provide a service, information, or data in return for payment (iii) for therapeutic, diagnostic or prophylactic purposes; or (iv) for resale, regardless of whether they are sold for use in research. For information on purchasing a license to this product for purposes other than research, contact</p>

## Properties

<b>Form</b>	Liquid
<b>Storage instructions</b>	Shipped at 4°C. Store at +4°C short term (1-2 weeks). Upon delivery aliquot. Store at -20°C long term. Avoid freeze / thaw cycle. Store In the Dark.
<b>Dissociation constant (K<sub>D</sub>)</b>	K <sub>D</sub> = 5.50 x 10 <sup>-10</sup> M



<b>Storage buffer</b>	pH: 7.40 Preservative: 0.02% Sodium azide Constituents: 68.98% PBS, 30% Glycerol (glycerin, glycerine), 1% BSA
<b>Purity</b>	Protein A purified
<b>Clonality</b>	Monoclonal
<b>Clone number</b>	EP1576Y
<b>Isotype</b>	IgG

## Applications

Our [Abpromise guarantee](#) covers the use of **ab274881** in the following tested applications.

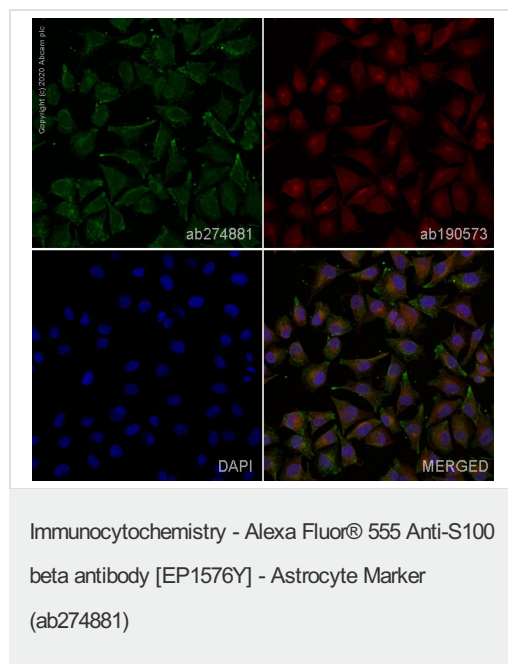
The application notes include recommended starting dilutions; optimal dilutions/concentrations should be determined by the end user.

Application	Abreviews	Notes
ICC		1/50. This product gave a positive signal in A375 fixed with 4% formaldehyde (10 min).

## Target

<b>Function</b>	Weakly binds calcium but binds zinc very tightly-distinct binding sites with different affinities exist for both ions on each monomer. Physiological concentrations of potassium ion antagonize the binding of both divalent cations, especially affecting high-affinity calcium-binding sites. Binds to and initiates the activation of STK38 by releasing autoinhibitory intramolecular interactions within the kinase. Interaction with AGER after myocardial infarction may play a role in myocyte apoptosis by activating ERK1/2 and p53/TP53 signaling.
<b>Tissue specificity</b>	Although predominant among the water-soluble brain proteins, S100 is also found in a variety of other tissues.
<b>Sequence similarities</b>	Belongs to the S-101 family. Contains 2 EF-hand domains.

## Images



Immunofluorescence analysis of A-375 (Human malignant melanoma cell line) cells labeling S100 beta with ab274881. The cells were fixed with 4% formaldehyde (10 min), permeabilized with 0.1% Triton X-100 for 5 minutes and then blocked with 1% BSA/10% normal goat serum/0.3M glycine in 0.1% PBS-Tween for 1h. The cells were then incubated overnight at +4°C with ab274881 at 1/50 dilution (pseudocolored in green) and ab190573, Rabbit monoclonal to alphaTubulin (Alexa Fluor® 647), at 1/250 dilution (shown in red). Nuclear DNA was labelled with DAPI (shown in blue). Image was taken with a confocal microscope (Leica-Microsystems, TCS SP8).

**Please note:** All products are "FOR RESEARCH USE ONLY. NOT FOR USE IN DIAGNOSTIC PROCEDURES"

## Our Abpromise to you: Quality guaranteed and expert technical support

- Replacement or refund for products not performing as stated on the datasheet
- Valid for 12 months from date of delivery
- Response to your inquiry within 24 hours
- We provide support in Chinese, English, French, German, Japanese and Spanish
- Extensive multi-media technical resources to help you
- We investigate all quality concerns to ensure our products perform to the highest standards

If the product does not perform as described on this datasheet, we will offer a refund or replacement. For full details of the Abpromise, please visit <https://www.abcam.com/abpromise> or contact our technical team.

## Terms and conditions

- Guarantee only valid for products bought direct from Abcam or one of our authorized distributors