


Product datasheet

Anti-S100A10 antibody ab137658

KO VALIDATED

3 Images

Overview

Product name	Anti-S100A10 antibody
Description	Rabbit polyclonal to S100A10
Host species	Rabbit
Tested applications	Suitable for: WB, IHC-P
Species reactivity	Reacts with: Human Predicted to work with: Rabbit, Cow, Monkey 
Immunogen	Synthetic peptide, corresponding to a region within amino acids 1-26 of Human S100A10.
Positive control	A431 whole cell lysate, H1299 and HeLa whole cell lysate. Gastric carcinoma tissue

Properties

Form	Liquid
Storage instructions	Shipped at 4°C. Upon delivery aliquot. Store at -20°C or -80°C. Avoid freeze / thaw cycle.
Storage buffer	pH: 7.00 Preservative: 0.01% Thimerosal (merthiolate) Constituents: 1.21% Tris, 0.75% Glycine, 20% Glycerol
Purity	Immunogen affinity purified
Clonality	Polyclonal
Isotype	IgG

Applications

Our [Abpromise guarantee](#) covers the use of **ab137658** in the following tested applications.

The application notes include recommended starting dilutions; optimal dilutions/concentrations should be determined by the end user.

Application	Abreviews	Notes
WB		1/500 - 1/3000. Predicted molecular weight: 11 kDa.

Application	Abreviews	Notes
-------------	-----------	-------

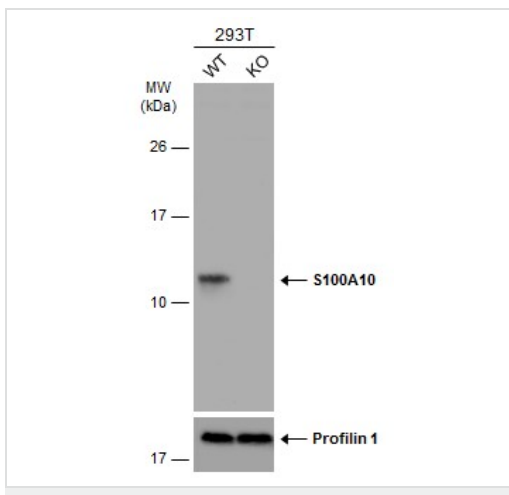
IHC-P 1/100 - 1/1000. Perform heat mediated antigen retrieval with citrate buffer pH 6 before commencing with IHC staining protocol. Antigen retrieval using heat mediated Tris/EDTA buffer (pH 8.0) is also possible.

Target

Function Because S100A10 induces the dimerization of ANXA2/p36, it may function as a regulator of protein phosphorylation in that the ANXA2 monomer is the preferred target (in vitro) of tyrosine-specific kinase.

Sequence similarities Belongs to the S-100 family.

Images



Western blot - Anti-S100A10 antibody (ab137658)

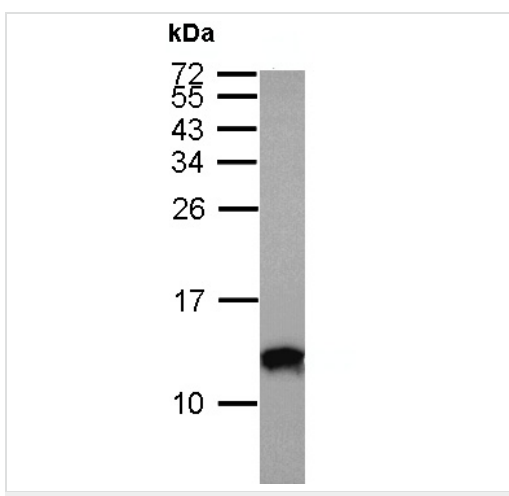
All lanes : Anti-S100A10 antibody (ab137658) at 1/1000 dilution

- Lane 1** : WT 293T cell extracts
- Lane 2** : S100A10 Knockout 293T cell extracts

Lysates/proteins at 30 µg per lane.

Secondary
All lanes : HRP-conjugated anti-rabbit IgG

Predicted band size: 11 kDa

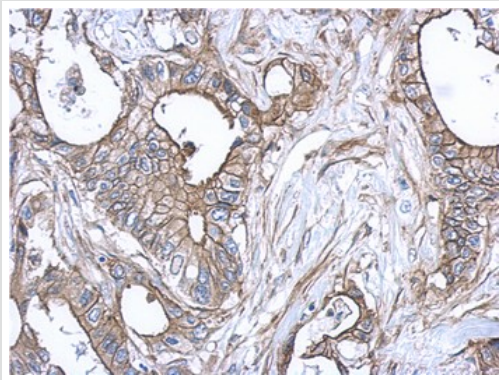


Western blot - Anti-S100A10 antibody (ab137658)

Anti-S100A10 antibody (ab137658) at 1/1000 dilution + A431 whole cell lysate at 30 µg

Predicted band size: 11 kDa

15% SDS PAGE



Immunohistochemical analysis of paraffin-embedded gastric carcinoma labelling S100A10 with ab137658 at 1/500 dilution.

Immunohistochemistry (Formalin/PFA-fixed paraffin-embedded sections) - Anti-S100A10 antibody (ab137658)

Please note: All products are "FOR RESEARCH USE ONLY. NOT FOR USE IN DIAGNOSTIC PROCEDURES"

Our Abpromise to you: Quality guaranteed and expert technical support

- Replacement or refund for products not performing as stated on the datasheet
- Valid for 12 months from date of delivery
- Response to your inquiry within 24 hours
- We provide support in Chinese, English, French, German, Japanese and Spanish
- Extensive multi-media technical resources to help you
- We investigate all quality concerns to ensure our products perform to the highest standards

If the product does not perform as described on this datasheet, we will offer a refund or replacement. For full details of the Abpromise, please visit <https://www.abcam.com/abpromise> or contact our technical team.

Terms and conditions

- Guarantee only valid for products bought direct from Abcam or one of our authorized distributors