

## Product datasheet

# Anti-S100A12/CGRP antibody ab196740

[2 Images](#)

### Overview

---

<b>Product name</b>	Anti-S100A12/CGRP antibody
<b>Description</b>	Rabbit polyclonal to S100A12/CGRP
<b>Host species</b>	Rabbit
<b>Tested applications</b>	<b>Suitable for:</b> IHC-P, ICC/IF
<b>Species reactivity</b>	<b>Reacts with:</b> Human
<b>Immunogen</b>	Recombinant full length protein corresponding to Human S100A12/CGRP. Database link: <a href="#">P80511</a>
<b>Positive control</b>	Human thyroid cancer tissue; HeLa cells.
<b>General notes</b>	This product was previously labelled as S100A12

### Properties

---

<b>Form</b>	Liquid
<b>Storage instructions</b>	Shipped at 4°C. Store at +4°C short term (1-2 weeks). Upon delivery aliquot. Store at -20°C long term. Avoid freeze / thaw cycle.
<b>Storage buffer</b>	pH: 7.40 Preservative: 0.02% Sodium azide Constituents: 50% Glycerol, 49% PBS, 0.87% Sodium chloride  PBS without Mg <sup>2+</sup> and Ca <sup>2+</sup> .
<b>Purity</b>	Immunogen affinity purified
<b>Clonality</b>	Polyclonal
<b>Isotype</b>	IgG

### Applications

---

Our [Abpromise guarantee](#) covers the use of **ab196740** in the following tested applications.

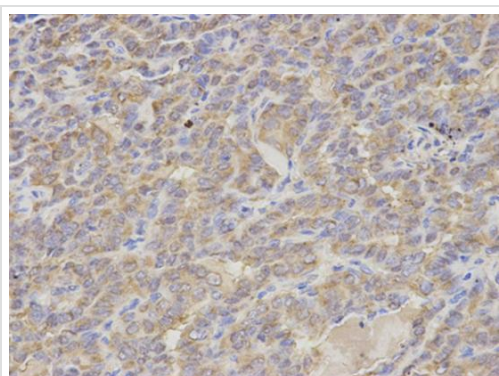
The application notes include recommended starting dilutions; optimal dilutions/concentrations should be determined by the end user.

Application	Abreviews	Notes
IHC-P		1/50 - 1/200.
ICC/IF		1/50 - 1/200.

## Target

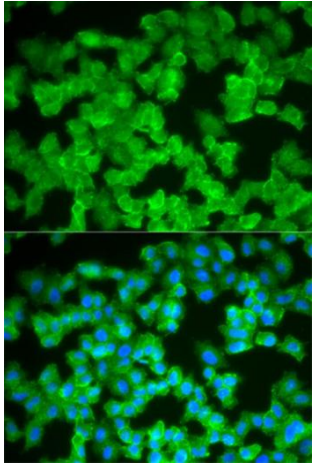
<b>Function</b>	Calcitermin possesses antifungal activity against <i>C.albicans</i> and is also active against <i>E.coli</i> and <i>P.aeruginosa</i> but not <i>L.monocytogenes</i> and <i>S.aureus</i> . Binds calcium, zinc and copper. Presence of zinc increases the affinity for calcium. Plays an important role in the inflammatory response. Interaction with AGER on endothelium, mononuclear phagocytes, and lymphocytes triggers cellular activation, with generation of key proinflammatory mediators.
<b>Tissue specificity</b>	Monocytes and lymphocytes.
<b>Sequence similarities</b>	Belongs to the S-101 family. Contains 2 EF-hand domains.

## Images



Immunohistochemical analysis of paraffin-embedded Human thyroid cancer tissue labeling S100A12/CGRP with ab196740 at 1/200 dilution.

Immunohistochemistry (Formalin/PFA-fixed paraffin-embedded sections) - Anti-S100A12/CGRP antibody (ab196740)



Immunofluorescent analysis of HeLa cells labeling S100A12/CGRP with ab196740 at 1/50 dilution. Blue: DAPI for nuclear staining.

Immunocytochemistry/ Immunofluorescence - Anti-S100A12/CGRP antibody (ab196740)

**Please note:** All products are "FOR RESEARCH USE ONLY. NOT FOR USE IN DIAGNOSTIC PROCEDURES"

### Our Abpromise to you: Quality guaranteed and expert technical support

---

- Replacement or refund for products not performing as stated on the datasheet
- Valid for 12 months from date of delivery
- Response to your inquiry within 24 hours
- We provide support in Chinese, English, French, German, Japanese and Spanish
- Extensive multi-media technical resources to help you
- We investigate all quality concerns to ensure our products perform to the highest standards

If the product does not perform as described on this datasheet, we will offer a refund or replacement. For full details of the Abpromise, please visit <https://www.abcam.com/abpromise> or contact our technical team.

### Terms and conditions

---

- Guarantee only valid for products bought direct from Abcam or one of our authorized distributors