

## Product datasheet

# S100B ELISA Kit ab234573

Recombinant SimpleStep ELISA

[1 References](#) [4 Images](#)

### Overview

**Product name** S100B ELISA Kit

**Detection method** Colorimetric

**Precision**

Intra-assay

Sample	n	Mean	SD	CV%
Protein	6			2.5%

**Sample type**

Tissue Extracts

**Assay type**

Sandwich (quantitative)

**Sensitivity**

139 pg/ml

**Range**

0.31 ng/ml - 20 ng/ml

**Recovery**

Sample specific recovery

Sample type	Average %	Range
Tissue Extracts	97	92% - 100%

**Assay time**

1h 30m

**Assay duration**

One step assay

**Species reactivity**

**Reacts with:** Mouse, Rat, Human

**Product overview**

S100B ELISA Kit (ab234573) is a single-wash 90 min sandwich ELISA designed for the quantitative measurement of S100B protein in tissue extracts. It uses our proprietary SimpleStep ELISA® technology. Quantitate S100B with 139 pg/ml sensitivity.

SimpleStep ELISA® technology employs capture antibodies conjugated to an affinity tag that is recognized by the monoclonal antibody used to coat our SimpleStep ELISA® plates. This approach to sandwich ELISA allows the formation of the antibody-analyte sandwich complex in a single step, significantly reducing assay time. See the SimpleStep ELISA® protocol summary in the image section for further details. Our SimpleStep ELISA® technology provides several benefits:

- Single-wash protocol reduces assay time to 90 minutes or less
- High sensitivity, specificity and reproducibility from superior antibodies
- Fully validated in biological samples
- 96-wells plate breakable into 12 x 8 wells strips

A 384-well SimpleStep ELISA® microplate ([ab203359](#)) is available to use as an alternative to the 96-well microplate provided with SimpleStep ELISA® kits.

**Notes** Abcam has not and does not intend to apply for the REACH Authorisation of customers' uses of products that contain European Authorisation list (Annex XIV) substances. It is the responsibility of our customers to check the necessity of application of REACH Authorisation, and any other relevant authorisations, for their intended uses.

**Platform** Pre-coated microplate (12 x 8 well strips)

## Properties

**Storage instructions** Store at +4°C. Please refer to protocols.

Components	1 x 96 tests
10X Wash Buffer PT (ab206977)	1 x 20ml
50X Cell Extraction Enhancer Solution (ab193971)	1 x 1ml
5X Cell Extraction Buffer PTR (ab193970)	1 x 10ml
Antibody Diluent 4BI	1 x 6ml
10X Human S100B Capture Antibody	1 x 600µl
10X Human S100B Detector Antibody	1 x 600µl
Human S100B Lyophilized Recombinant Protein	2 vials
Plate Seals	1 unit
Sample Diluent NS (ab193972)	1 x 12ml
SimpleStep Pre-Coated 96-Well Microplate (ab206978)	1 unit
Stop Solution	1 x 12ml
TMB Development Solution	1 x 12ml

**Function** Weakly binds calcium but binds zinc very tightly-distinct binding sites with different affinities exist for both ions on each monomer. Physiological concentrations of potassium ion antagonize the binding of both divalent cations, especially affecting high-affinity calcium-binding sites. Binds to and initiates the activation of STK38 by releasing autoinhibitory intramolecular interactions within the kinase. Interaction with AGER after myocardial infarction may play a role in myocyte apoptosis by activating ERK1/2 and p53/TP53 signaling.

**Tissue specificity** Although predominant among the water-soluble brain proteins, S100 is also found in a variety of

other tissues.

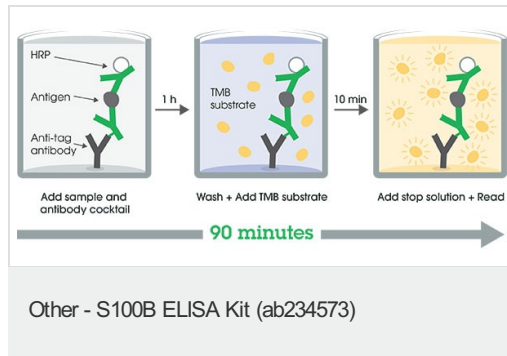
### Sequence similarities

Belongs to the S-101 family.  
Contains 2 EF-hand domains.

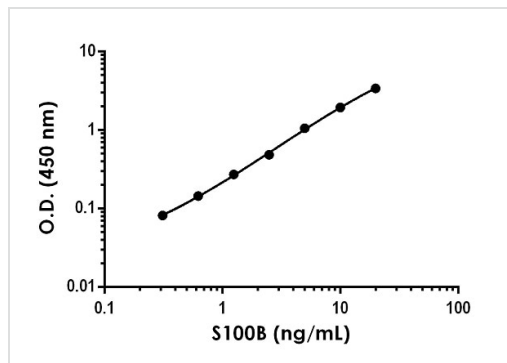
### Cellular localization

Cytoplasm. Nucleus.

### Images

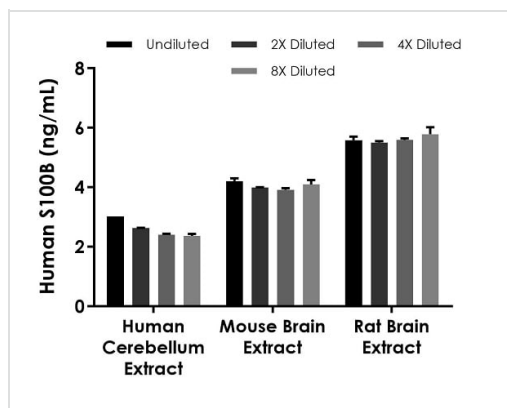


SimpleStep ELISA technology allows the formation of the antibody-antigen complex in one single step, reducing assay time to 90 minutes. Add samples or standards and antibody mix to wells all at once, incubate, wash, and add your final substrate. See protocol for a detailed step-by-step guide.



Background-subtracted data values (mean +/- SD) are graphed.

Example of S100B standard curve in 1X Cell Extraction Buffer PTR.



The concentrations of S100B were measured in duplicates, interpolated from the S100B standard curves and corrected for sample dilution. The interpolated dilution factor corrected values are plotted (mean +/- SD, n=2).

Interpolated concentrations of native S100B protein in human, mouse, and rat brain extracts based on 2 µg/mL, 60 µg/mL, and 1 µg/mL loads, respectively.

Powered by  
recombinant antibodies



**Research with confidence**  
Consistent and reproducible results



**Long-term and scalable supply**  
Recombinant technology



**Success from the first experiment**  
Confirmed specificity



**Ethical standards compliant**  
Animal-free production

Sandwich ELISA - S100B ELISA Kit (ab234573)

To learn more about the advantages of recombinant antibodies see [here](#).

**Please note:** All products are "FOR RESEARCH USE ONLY. NOT FOR USE IN DIAGNOSTIC PROCEDURES"

### Our Abpromise to you: Quality guaranteed and expert technical support

---

- Replacement or refund for products not performing as stated on the datasheet
- Valid for 12 months from date of delivery
- Response to your inquiry within 24 hours
- We provide support in Chinese, English, French, German, Japanese and Spanish
- Extensive multi-media technical resources to help you
- We investigate all quality concerns to ensure our products perform to the highest standards

If the product does not perform as described on this datasheet, we will offer a refund or replacement. For full details of the Abpromise, please visit <https://www.abcam.com/abpromise> or contact our technical team.

### Terms and conditions

---

- Guarantee only valid for products bought direct from Abcam or one of our authorized distributors