




Product datasheet

Anti-S1PR2 antibody ab220173

1 Image

Overview

<b>Product name</b>	Anti-S1PR2 antibody
<b>Description</b>	Rabbit polyclonal to S1PR2
<b>Host species</b>	Rabbit
<b>Tested applications</b>	<b>Suitable for:</b> WB
<b>Species reactivity</b>	<b>Reacts with:</b> Human <b>Predicted to work with:</b> Mouse, Rat 
<b>Immunogen</b>	Recombinant fragment corresponding to Human S1PR2 aa 1-200. Sequence:  MGSLYSEYLN PNKVQEHYNY TKETLETQET TSRQVASAFI VILCCAMVE NLLVLIAVAR NSKFHSAMYL FLGNLAASDL LAGVAFVANT LLSGSVTLRL TPVQWFAREG SAFITLSASV FSLLAIAIER HVAIAKVKLY GSDKSCRMLL LIGASWLISL VLGGLPILGW NCLGHLEACS TVLPLYAKHY VLCVVTIFS  Database link: <a href="#">O95136</a> <div style="float: right; margin-top: 10px;">  <a href="#">Run BLAST with</a>  <a href="#">Run BLAST with</a> </div>
<b>Positive control</b>	HeLa and human intestine lysates.
<b>General notes</b>	This product was previously labelled as EDG5

Properties

<b>Form</b>	Liquid
<b>Storage instructions</b>	Shipped at 4°C. Store at +4°C short term (1-2 weeks). Upon delivery aliquot. Store at -20°C long term. Avoid freeze / thaw cycle.
<b>Storage buffer</b>	Preservative: 0.05% Sodium azide Constituents: 99% PBS, 0.05% BSA
<b>Purity</b>	Protein A purified
<b>Clonality</b>	Polyclonal

Isotype

IgG

## Applications

Our [Abpromise guarantee](#) covers the use of **ab220173** in the following tested applications.

The application notes include recommended starting dilutions; optimal dilutions/concentrations should be determined by the end user.

Application	Abreviews	Notes
WB		Use a concentration of 1 - 2 µg/ml. Predicted molecular weight: 38 kDa.

## Target

### Function

Receptor for the lysosphingolipid sphingosine 1-phosphate (S1P). S1P is a bioactive lysophospholipid that elicits diverse physiological effect on most types of cells and tissues. When expressed in rat HTC4 hepatoma cells, is capable of mediating S1P-induced cell proliferation and suppression of apoptosis.

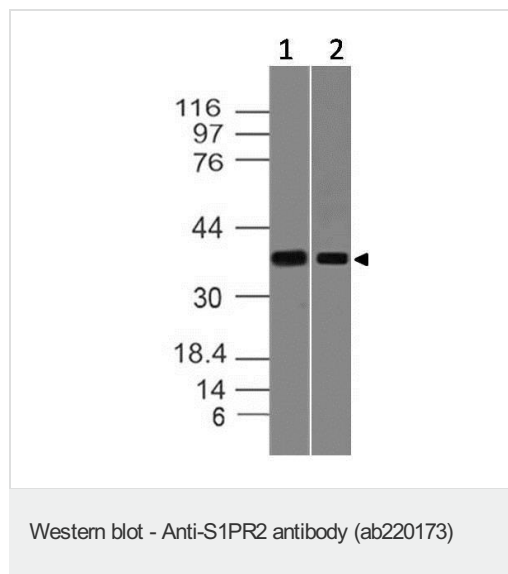
### Sequence similarities

Belongs to the G-protein coupled receptor 1 family.

### Cellular localization

Cell membrane.

## Images



**All lanes** : Anti-S1PR2 antibody (ab220173) at 1 µg/ml

**Lane 1** : HeLa cell lysate

**Lane 2** : human intestine lysate

**Predicted band size:** 38 kDa

**Please note:** All products are "FOR RESEARCH USE ONLY. NOT FOR USE IN DIAGNOSTIC PROCEDURES"

## Our Abpromise to you: Quality guaranteed and expert technical support

- Replacement or refund for products not performing as stated on the datasheet
- Valid for 12 months from date of delivery
- Response to your inquiry within 24 hours

- We provide support in Chinese, English, French, German, Japanese and Spanish
- Extensive multi-media technical resources to help you
- We investigate all quality concerns to ensure our products perform to the highest standards

If the product does not perform as described on this datasheet, we will offer a refund or replacement. For full details of the Abpromise, please visit <https://www.abcam.com/abpromise> or contact our technical team.

### **Terms and conditions**

---

- Guarantee only valid for products bought direct from Abcam or one of our authorized distributors