

Product datasheet

Anti-S1PR2 antibody ab235919

3 Images

Overview

Product name	Anti-S1PR2 antibody
Description	Rabbit polyclonal to S1PR2
Host species	Rabbit
Tested applications	Suitable for: WB, IHC-P, ICC/IF
Species reactivity	Reacts with: Mouse, Human Predicted to work with: Rat
Immunogen	Recombinant fragment corresponding to Human S1PR2 aa 293-353. Sequence: RDLRREVLRLPLQCWRPGVGVQGRRRGGTPGHLLPLRS SSSLERGMHMPT SPTFLEGNTVV Database link: O95136 Run BLAST with Run BLAST with
Positive control	WB: Mouse brain lysate. IHC-P: Human small intestine tissue. ICC/IF: SH-SY5Y cells.
General notes	This product was previously labelled as EDG5

Reproducibility is key to advancing scientific discovery and accelerating scientists' next breakthrough.

Abcam is leading the way with our range of recombinant antibodies, knockout-validated antibodies and knockout cell lines, all of which support improved reproducibility.

We are also planning to innovate the way in which we present recommended applications and species on our product datasheets, so that only applications & species that have been tested in our own labs, our suppliers or by selected trusted collaborators are covered by our Abpromise™ guarantee.

In preparation for this, we have started to update the applications & species that this product is Abpromise guaranteed for.

We are also updating the applications & species that this product has been “predicted to work with,” however this information is not covered by our Abpromise guarantee.

Applications & species from publications and Abreviews that have not been tested in our own labs or in those of our suppliers are not covered by the Abpromise guarantee.

Please check that this product meets your needs before purchasing. If you have any questions,

special requirements or concerns, please send us an inquiry and/or contact our Support team ahead of purchase. Recommended alternatives for this product can be found below, as well as customer reviews and Q&As.

Properties

Form	Liquid
Storage instructions	Shipped at 4°C. Store at +4°C short term (1-2 weeks). Upon delivery aliquot. Store at -20°C long term. Avoid freeze / thaw cycle.
Storage buffer	pH: 7.40 Constituents: PBS, 50% Glycerol, 0.03% Proclin 300
Purity	Protein G purified
Purification notes	Purity >95%.
Clonality	Polyclonal
Isotype	IgG

Applications

Our [Abpromise guarantee](#) covers the use of **ab235919** in the following tested applications.

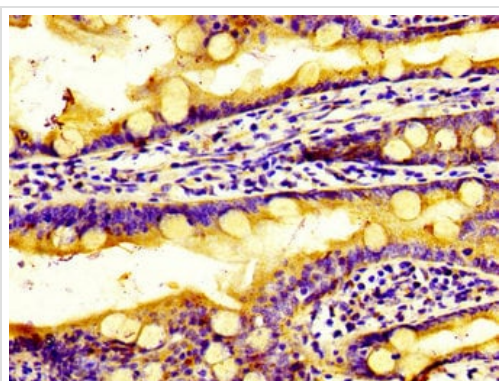
The application notes include recommended starting dilutions; optimal dilutions/concentrations should be determined by the end user.

Application	Abreviews	Notes
WB		1/500 - 1/5000. Predicted molecular weight: 39 kDa.
IHC-P		1/20 - 1/200.
ICC/IF		1/200 - 1/500.

Target

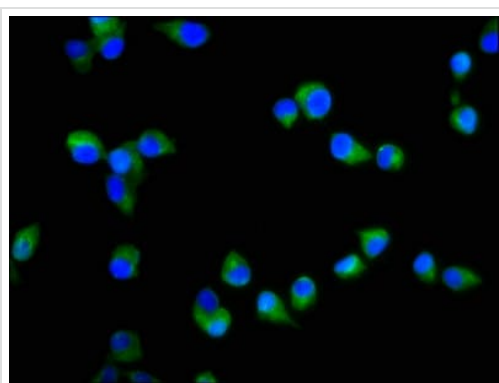
Function	Receptor for the lysosphingolipid sphingosine 1-phosphate (S1P). S1P is a bioactive lysophospholipid that elicits diverse physiological effect on most types of cells and tissues. When expressed in rat HTC4 hepatoma cells, is capable of mediating S1P-induced cell proliferation and suppression of apoptosis.
Sequence similarities	Belongs to the G-protein coupled receptor 1 family.
Cellular localization	Cell membrane.

Images



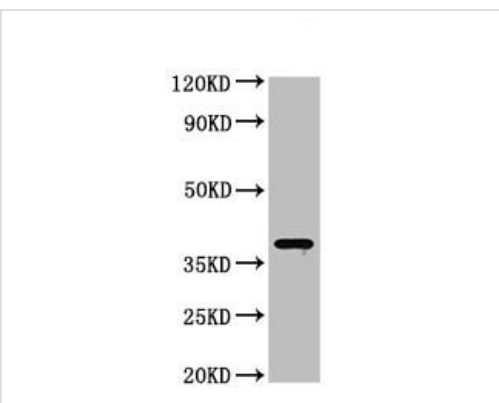
Immunohistochemistry (Formalin/PFA-fixed paraffin-embedded sections) - Anti-S1PR2 antibody (ab235919)

Paraffin-embedded human small intestine tissue stained for S1PR2 using ab235919 at 1/100 dilution in immunohistochemical analysis.



Immunocytochemistry/ Immunofluorescence - Anti-S1PR2 antibody (ab235919)

4% formaldehyde-fixed, 0.2% Triton X-100 permeabilized SH-SY5Y (human neuroblastoma cell line from bone marrow) cells stained for S1PR2 (green) using ab235919 at 1/200 dilution in ICC/IF. Secondary antibody is Alexa Fluor® 488-conjugated AffiniPure Goat Anti-Rabbit IgG (H+L). Counter stained with DAPI.



Western blot - Anti-S1PR2 antibody (ab235919)

Anti-S1PR2 antibody (ab235919) at 1/500 dilution + Mouse brain lysate

Secondary

Goat polyclonal to rabbit IgG at 1/50000 dilution

Predicted band size: 39 kDa

Our Abpromise to you: Quality guaranteed and expert technical support

- Replacement or refund for products not performing as stated on the datasheet
- Valid for 12 months from date of delivery
- Response to your inquiry within 24 hours

- We provide support in Chinese, English, French, German, Japanese and Spanish
- Extensive multi-media technical resources to help you
- We investigate all quality concerns to ensure our products perform to the highest standards

If the product does not perform as described on this datasheet, we will offer a refund or replacement. For full details of the Abpromise, please visit <https://www.abcam.com/abpromise> or contact our technical team.

Terms and conditions

- Guarantee only valid for products bought direct from Abcam or one of our authorized distributors