


Product datasheet

Anti-SA1 antibody - C-terminal ab227736

3 Images

Overview

Product name	Anti-SA1 antibody - C-terminal
Description	Rabbit polyclonal to SA1 - C-terminal
Host species	Rabbit
Tested applications	Suitable for: WB, IP
Species reactivity	Reacts with: Human Predicted to work with: Mouse, Rat, Xenopus laevis 
Immunogen	Synthetic peptide within Human SA1 (C terminal). The exact sequence is proprietary. Carrier-protein conjugated. Database link: Q8WVM7
Positive control	WB: HEK-293T, A431, HeLa and HepG2 whole cell extracts. IP: HeLa whole cell extract.

Properties

Form	Liquid
Storage instructions	Shipped at 4°C. Store at +4°C short term (1-2 weeks). Upon delivery aliquot. Store at -20°C long term. Avoid freeze / thaw cycle.
Storage buffer	pH: 7.00 Preservative: 0.025% Proclin Constituents: PBS, 20% Glycerol
Purity	Immunogen affinity purified
Clonality	Polyclonal
Isotype	IgG

Applications

Our [Abpromise guarantee](#) covers the use of **ab227736** in the following tested applications.

The application notes include recommended starting dilutions; optimal dilutions/concentrations should be determined by the end user.

Application	Abreviews	Notes
WB		1/500 - 1/10000. Predicted molecular weight: 144 kDa.

Application	Abreviews	Notes
IP		1/100 - 1/500.

Target

Function

Component of cohesin complex, a complex required for the cohesion of sister chromatids after DNA replication. The cohesin complex apparently forms a large proteinaceous ring within which sister chromatids can be trapped. At anaphase, the complex is cleaved and dissociates from chromatin, allowing sister chromatids to segregate. The cohesin complex may also play a role in spindle pole assembly during mitosis.

Sequence similarities

Belongs to the SCC3 family.
Contains 1 SCD (stromalin conservative) domain.

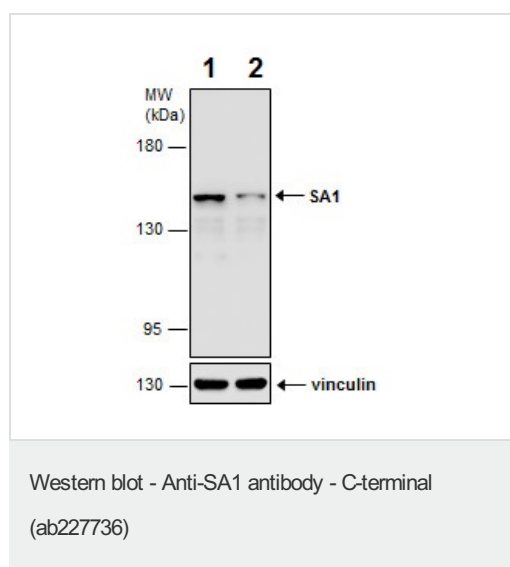
Post-translational modifications

Phosphorylated by PLK. The large dissociation of cohesin from chromosome arms during prophase is partly due to its phosphorylation.

Cellular localization

Nucleus. Chromosome. Chromosome > centromere. Associates with chromatin. Before prophase it is scattered along chromosome arms. During prophase, most of cohesin complexes dissociate from chromatin probably because of phosphorylation by PLK, except at centromeres, where cohesin complexes remain. At anaphase, the RAD21 subunit of cohesin is cleaved, leading to the dissociation of the complex from chromosomes, allowing chromosome separation.

Images



All lanes : Anti-SA1 antibody - C-terminal (ab227736) at 1/5000 dilution

Lane 1 : Non-transfected HEK-293T (human epithelial cell line from embryonic kidney transformed with large T antigen) whole cell extract

Lane 2 : HEK-293T (human epithelial cell line from embryonic kidney transformed with large T antigen) transfected with SA1 shRNA, whole cell extract

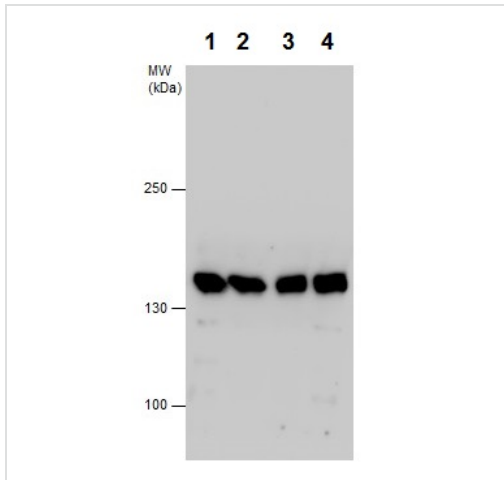
Lysates/proteins at 30 µg per lane.

Secondary

All lanes : HRP-conjugated anti-rabbit IgG

Predicted band size: 144 kDa

5% SDS-PAGE gel.



Western blot - Anti-SA1 antibody - C-terminal (ab227736)

All lanes : Anti-SA1 antibody - C-terminal (ab227736) at 1/1000 dilution

Lane 1 : HEK-293T (human epithelial cell line from embryonic kidney transformed with large T antigen) whole cell extract

Lane 2 : A431 (human epidermoid carcinoma cell line) whole cell extract

Lane 3 : HeLa (human epithelial cell line from cervix adenocarcinoma) whole cell extract

Lane 4 : HepG2 (human liver hepatocellular carcinoma cell line) whole cell extract

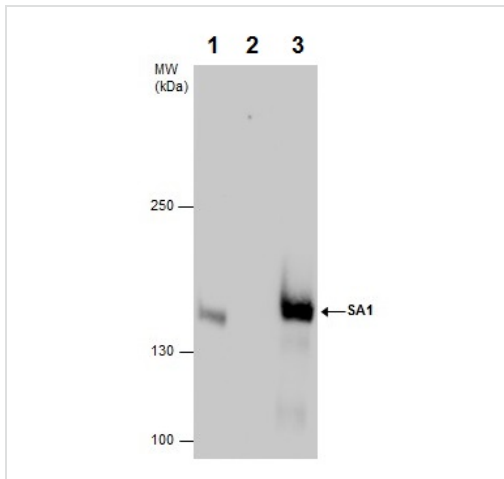
Lysates/proteins at 30 µg per lane.

Secondary

All lanes : HRP-conjugated anti-rabbit IgG

Predicted band size: 144 kDa

5% SDS-PAGE gel.



Immunoprecipitation - Anti-SA1 antibody - C-terminal (ab227736)

SA1 was immunoprecipitated from HeLa (human epithelial cell line from cervix adenocarcinoma) whole cell extract with 5 µg of ab227736. Western blot was performed from the immunoprecipitate using ab227736.

Lane 1: HeLa whole cell extract (Input).

Lane 2: Control IgG instead of ab227736 in HeLa whole cell extract.

Lane 3: ab227736 IP in HeLa whole cell extract.

Please note: All products are "FOR RESEARCH USE ONLY. NOT FOR USE IN DIAGNOSTIC PROCEDURES"

Our Abpromise to you: Quality guaranteed and expert technical support

- Replacement or refund for products not performing as stated on the datasheet

- Valid for 12 months from date of delivery
- Response to your inquiry within 24 hours

- We provide support in Chinese, English, French, German, Japanese and Spanish
- Extensive multi-media technical resources to help you
- We investigate all quality concerns to ensure our products perform to the highest standards

If the product does not perform as described on this datasheet, we will offer a refund or replacement. For full details of the Abpromise, please visit <https://www.abcam.com/abpromise> or contact our technical team.

Terms and conditions

- Guarantee only valid for products bought direct from Abcam or one of our authorized distributors