

Product datasheet


Anti-Saporin antibody ab228503

1 Image

Overview

Product name	Anti-Saporin antibody
Description	Rabbit polyclonal to Saporin
Host species	Rabbit

Tested Applications & Species

Application	Species
WB	 Species independent

See all applications and species data 

Immunogen Full length protein corresponding to Soapwort Saporin.
Database link: [P20656](#)

Positive control WB: Purified saporin protein.

General notes

The Life Science industry has been in the grips of a reproducibility crisis for a number of years. Abcam is leading the way in addressing the problem with our range of recombinant monoclonal antibodies and knockout edited cell lines for gold-standard validation.

One factor contributing to the crisis is the use of antibodies that are not suitable. This can lead to misleading results and the use of incorrect data informing project assumptions and direction. To help address this challenge, we have introduced an application and species grid on our primary antibody datasheets to make it easy to simplify identification of the right antibody for your needs.

Learn more [here](#).

Properties

Form Lyophilized: Reconstitute in 100 µl of sterile water. Centrifuge to remove any insoluble material. After reconstitution keep aliquots at -20°C for a higher stability, and at 4°C with an appropriate antibacterial agent. Avoid repetitive freeze/thaw cycles. Glycerol (1:1) may be added for an additional stability.

Storage instructions Shipped at 4°C. Store at +4°C short term (1-2 weeks). Upon delivery aliquot. Store at -20°C long term. Avoid freeze / thaw cycle.


Storage buffer pH: 7

Purity	Whole antiserum
Clonality	Polyclonal
Isotype	IgG

Applications

The Abpromise guarantee Our [Abpromise guarantee](#) covers the use of **ab228503** in the following tested applications. The application notes include recommended starting dilutions; optimal dilutions/concentrations should be determined by the end user.

 Guaranteed Tested applications are guaranteed to work and covered by our Abpromise guarantee.	 Predicted Predicted to work for this combination of applications and species but not guaranteed.	 Incompatible Does not work for this combination of applications and species.
------------------------------------------------------------------------------------------------------------------------------------------------------------------------------------------	----------------------------------------------------------------------------------------------------------------------------------------------------------------------------------------------	----------------------------------------------------------------------------------------------------------------------------------------------------------------------------

Application	Species
WB	 Species independent

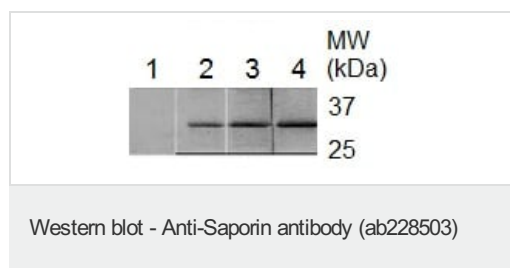
Application	Abreviews	Notes
WB		1/200 - 1/2000. Predicted molecular weight: 34 kDa.

Target

Relevance

Saporin is obtained from the seeds of the Soapwort plant (*Saponaria officinalis*), a plant that grows wildly in Britain and other parts of Europe. Saporin is a plant enzyme with N-glycosidase activity that depurinates a specific nucleotide in the ribosomal RNA 28S, thus irreversibly blocking protein synthesis. It belongs to the well-characterized family of ribosome-inactivating proteins (RIPs). There are two types of RIPs: type I, which are much less cytotoxic due to the lack of the B chain and type II, which are distinguished from type I RIPs by the presence of the B chain and their ability to enter cells on their own. However, type I RIPs can still be internalized by fluid-phase endocytosis. In the case of saporin, it was reported that saporin first binds to the alpha 2 macroglobulin receptor on human cells and is then internalized to the cytosol. Upon internalization, the ribosomes are inactivated, resulting in cell death. Among all type I RIPs saporin SO6 is the most widely used because it is easily obtainable and very stable.

Images



All lanes : Anti-Saporin antibody (ab228503) at 1/200 dilution

Lane 1 : Rat spinal cord homogenate at 1/500 dilution

Lane 2 : Purified saporin protein at 1/3000 dilution

Lane 3 : Purified saporin protein at 1/2000 dilution

Lane 4 : Purified saporin protein at 1/500 dilution

Secondary**All lanes** : HRP-labeled sheep anti-rabbit**Predicted band size:** 34 kDa**Observed band size:** 29.5 kDa

Visualization: DAB staining.

Please note: All products are "FOR RESEARCH USE ONLY. NOT FOR USE IN DIAGNOSTIC PROCEDURES"

Our Abpromise to you: Quality guaranteed and expert technical support

- Replacement or refund for products not performing as stated on the datasheet
- Valid for 12 months from date of delivery
- Response to your inquiry within 24 hours

- We provide support in Chinese, English, French, German, Japanese and Spanish
- Extensive multi-media technical resources to help you
- We investigate all quality concerns to ensure our products perform to the highest standards

If the product does not perform as described on this datasheet, we will offer a refund or replacement. For full details of the Abpromise, please visit <https://www.abcam.com/abpromise> or contact our technical team.

Terms and conditions

- Guarantee only valid for products bought direct from Abcam or one of our authorized distributors