

Product datasheet

Anti-SARA antibody ab221488

1 Image

Overview

<b>Product name</b>	Anti-SARA antibody
<b>Description</b>	Rabbit polyclonal to SARA
<b>Host species</b>	Rabbit
<b>Tested applications</b>	<b>Suitable for:</b> ICC/IF
<b>Species reactivity</b>	<b>Reacts with:</b> Human
<b>Immunogen</b>	Recombinant fragment corresponding to Human SARA aa 427-518. Sequence: QPEDTNGDSGGQCVGLADAGLDLKGTCISESEECDF STVIDTPAANYLSN GCDSYGMQDPGVSFVPKTLPSKEDSVTEEKEIEESKS ECYSN  Database link: <a href="#">O95405</a>
	<a href="#">Run BLAST with</a> <a href="#">Run BLAST with</a>
<b>Positive control</b>	RT4 cells.

Properties

<b>Form</b>	Liquid
<b>Storage instructions</b>	Shipped at 4°C. Store at +4°C short term (1-2 weeks). Upon delivery aliquot. Store at -20°C long term. Avoid freeze / thaw cycle.
<b>Storage buffer</b>	pH: 7.2 Preservative: 0.02% Sodium azide Constituents: 59% PBS, 40% Glycerol
<b>Purity</b>	Immunogen affinity purified
<b>Clonality</b>	Polyclonal
<b>Isotype</b>	IgG

Applications

Our [Abpromise guarantee](#) covers the use of **ab221488** in the following tested applications.

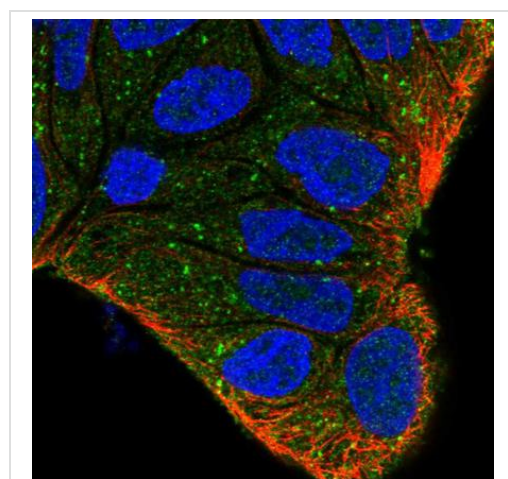
The application notes include recommended starting dilutions; optimal dilutions/concentrations should be determined by the end user.

Application	Abreviews	Notes
ICC/IF		Use a concentration of 1 - 4 µg/ml. Recommended conditions:  Fixation/Permeabilization: PFA/Triton X-100

## Target

<b>Function</b>	Early endosomal protein that functions to recruit SMAD2/SMAD3 to intracellular membranes and to the TGF-beta receptor. Plays a significant role in TGF-mediated signaling by regulating the subcellular location of SMAD2 and SMAD3 and modulating the transcriptional activity of the SMAD3/SMAD4 complex. Possibly associated with TGF-beta receptor internalization.
<b>Tissue specificity</b>	Ubiquitous. In the brain found primarily in the cerebrovascular smooth muscle cells and reactive astrocytes.
<b>Sequence similarities</b>	Contains 1 FYVE-type zinc finger.
<b>Domain</b>	The SMAD binding domain (SBD) interacts with the MH2 domains of SMAD2 or SMAD3. The FYVE-type zinc finger is necessary and sufficient for its localization into early endosomes and mediates the association with PI3P.
<b>Cellular localization</b>	Cytoplasm. Early endosome membrane.

## Images



Immunofluorescent analysis of PFA-fixed/Triton X-100 permeabilized RT4 cells labeling SARA with ab221488 at 4 µg/ml (green).

Immunocytochemistry/ Immunofluorescence - Anti-SARA antibody (ab221488)

**Please note:** All products are "FOR RESEARCH USE ONLY. NOT FOR USE IN DIAGNOSTIC PROCEDURES"

**Our Abpromise to you: Quality guaranteed and expert technical support**

- 
- Replacement or refund for products not performing as stated on the datasheet
  - Valid for 12 months from date of delivery
  - Response to your inquiry within 24 hours
  
  - We provide support in Chinese, English, French, German, Japanese and Spanish
  - Extensive multi-media technical resources to help you
  - We investigate all quality concerns to ensure our products perform to the highest standards

If the product does not perform as described on this datasheet, we will offer a refund or replacement. For full details of the Abpromise, please visit <https://www.abcam.com/abpromise> or contact our technical team.

### **Terms and conditions**

---

- Guarantee only valid for products bought direct from Abcam or one of our authorized distributors