


Product datasheet

Anti-SARM antibody ab226930

4 Images

Overview

<b>Product name</b>	Anti-SARM antibody
<b>Description</b>	Rabbit polyclonal to SARM
<b>Host species</b>	Rabbit
<b>Tested applications</b>	<b>Suitable for:</b> ICC/IF, IHC-P, WB
<b>Species reactivity</b>	<b>Reacts with:</b> Mouse, Rat, Human <b>Predicted to work with:</b> Rhesus monkey 
<b>Immunogen</b>	Recombinant fragment within Human SARM (C terminal). The exact sequence is proprietary. Database link: <a href="#">Q6SZW1</a>
<b>Positive control</b>	WB: A431, HeLa and HepG2 whole cell extracts; Mouse and rat brain extracts. IHC-P: Rat kidney tissue. ICC/IF: Rat E18 primary cortical neurons.

Properties

<b>Form</b>	Liquid
<b>Storage instructions</b>	Shipped at 4°C. Store at +4°C short term (1-2 weeks). Upon delivery aliquot. Store at -20°C long term. Avoid freeze / thaw cycle.
<b>Storage buffer</b>	pH: 7.00 Preservative: 0.025% Proclin Constituents: PBS, 20% Glycerol
<b>Purity</b>	Immunogen affinity purified
<b>Clonality</b>	Polyclonal
<b>Isotype</b>	IgG

Applications

Our [Abpromise guarantee](#) covers the use of **ab226930** in the following tested applications.

The application notes include recommended starting dilutions; optimal dilutions/concentrations should be determined by the end user.

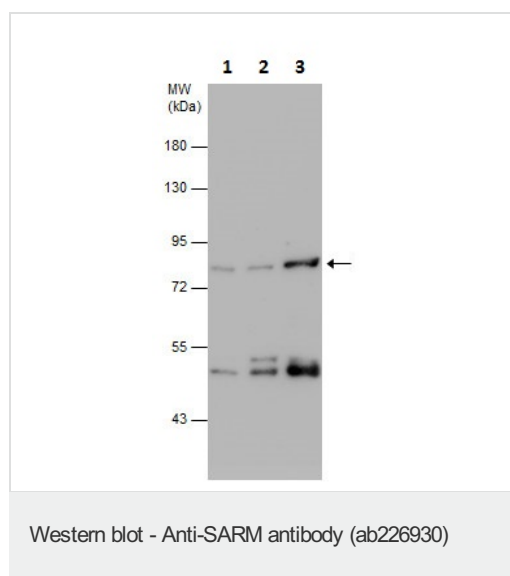
Application	Abreviews	Notes
ICC/IF		1/100 - 1/1000.

Application	Abreviews	Notes
IHC-P		1/100 - 1/1000.
WB		1/500 - 1/3000. Predicted molecular weight: 79 kDa.

## Target

<b>Function</b>	Involved in innate immune response. Acts as a negative regulator of TICAM1/TRIF-dependent Toll-like receptor signaling by inhibiting induction of TLR3- and TLR4-dependent genes. Specifically blocks TICAM1/TRIF-dependent transcription-factor activation and gene induction, without affecting the MYD88-dependent pathway or non-TLR signaling. Negative regulator of NF-kappa-B and IRF activation.
<b>Tissue specificity</b>	Predominantly expressed in kidney and liver. Expressed at lower level in placenta.
<b>Sequence similarities</b>	Contains 2 SAM (sterile alpha motif) domains. Contains 1 TIR domain.
<b>Cellular localization</b>	Cytoplasm.

## Images



**All lanes :** Anti-SARM antibody (ab226930) at 1/500 dilution

**Lane 1 :** A431 (human epidermoid carcinoma cell line) whole cell extract

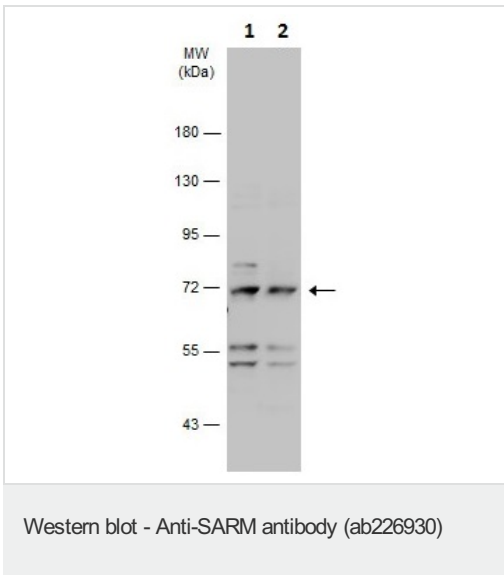
**Lane 2 :** HeLa (human epithelial cell line from cervix adenocarcinoma) whole cell extract

**Lane 3 :** HepG2 (human liver hepatocellular carcinoma cell line) whole cell extract

Lysates/proteins at 30 µg per lane.

**Predicted band size:** 79 kDa

7.5% SDS-PAGE gel.



**All lanes :** Anti-SARM antibody (ab226930) at 1/500 dilution

**Lane 1 :** Mouse brain extract

**Lane 2 :** Rat brain extract

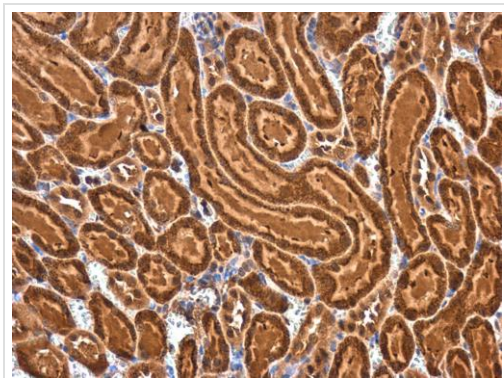
Lysates/proteins at 50 µg per lane.

**Secondary**

**All lanes :** HRP-conjugated anti-rabbit IgG

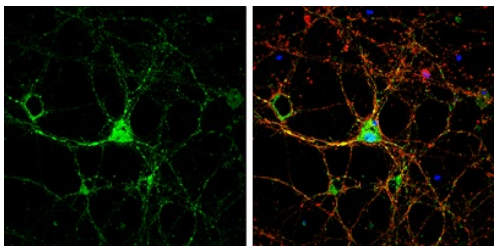
**Predicted band size:** 79 kDa

7.5% SDS-PAGE gel.



Paraffin-embedded rat kidney tissue stained for SARM with ab226930 at 1/400 dilution in immunohistochemical analysis.

Immunohistochemistry (Formalin/PFA-fixed paraffin-embedded sections) - Anti-SARM antibody (ab226930)



Immunocytochemistry/ Immunofluorescence - Anti-SARM antibody (ab226930)

4% paraformaldehyde-fixed rat E18 primary cortical neurons stained for SARM (green) using ab226930 at 1/500 dilution in ICC/IF.

The nuclear counter stain is DAPI (blue). Beta-Tubulin is detected with a beta-Tubulin antibody (red).

**Please note:** All products are "FOR RESEARCH USE ONLY. NOT FOR USE IN DIAGNOSTIC PROCEDURES"

### Our Abpromise to you: Quality guaranteed and expert technical support

---

- Replacement or refund for products not performing as stated on the datasheet
- Valid for 12 months from date of delivery
- Response to your inquiry within 24 hours
- We provide support in Chinese, English, French, German, Japanese and Spanish
- Extensive multi-media technical resources to help you
- We investigate all quality concerns to ensure our products perform to the highest standards

If the product does not perform as described on this datasheet, we will offer a refund or replacement. For full details of the Abpromise, please visit <https://www.abcam.com/abpromise> or contact our technical team.

### Terms and conditions

---

- Guarantee only valid for products bought direct from Abcam or one of our authorized distributors