


Product datasheet

# Anti-SARS-CoV-2 Spike Glycoprotein RBD antibody [2G1] ab277624

[2 Images](#)

Overview

---

<b>Product name</b>	Anti-SARS-CoV-2 Spike Glycoprotein RBD antibody [2G1]
<b>Description</b>	Mouse monoclonal [2G1] to SARS-CoV-2 Spike Glycoprotein RBD
<b>Host species</b>	Mouse
<b>Tested applications</b>	<b>Suitable for:</b> WB, ICC
<b>Species reactivity</b>	<b>Predicted to work with:</b> Human coronavirus 
<b>Immunogen</b>	Recombinant fragment corresponding to Human coronavirus SARS-CoV-2 Spike Glycoprotein RBD. Database link: <a href="#">P0DTC2</a>
<b>Positive control</b>	WB: HEK-293 cells transfected with the SARS-CoV2 binding domain. ICC: HEK-293 cells transfected with S-protein segment.

Properties

---

<b>Form</b>	Liquid
<b>Storage instructions</b>	Shipped at 4°C. Store at +4°C short term (1-2 weeks). Upon delivery aliquot. Store at -20°C. Avoid freeze / thaw cycle.
<b>Storage buffer</b>	Preservative: 0.03% Sodium azide Constituents: 49.07% PBS, 50% Glycerol (glycerin, glycerine)
<b>Purity</b>	Protein G purified
<b>Purification notes</b>	Purified from Tissue Culture supernatant.
<b>Clonality</b>	Monoclonal
<b>Clone number</b>	2G1
<b>Isotype</b>	IgG1

Applications

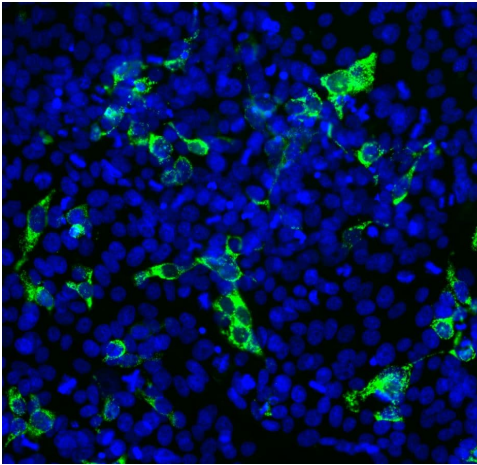
---

Our [Abpromise guarantee](#) covers the use of **ab277624** in the following tested applications.

The application notes include recommended starting dilutions; optimal dilutions/concentrations should be determined by the end user.

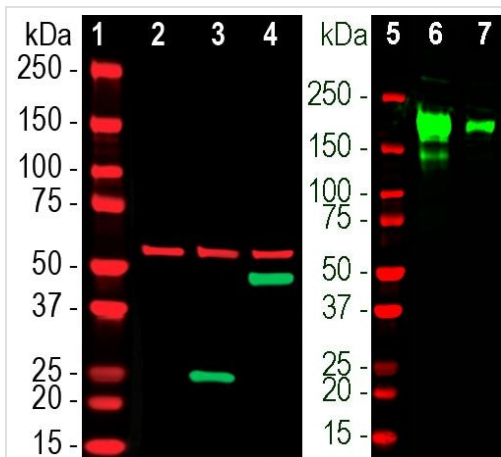
Application	Abreviews	Notes
WB		1/1000 - 1/3000.
ICC		1/1000.

## Images



Immunocytochemistry - Anti-Spike glycoprotein antibody [2G1] (ab277624)

HEK-293 cells transfected with the DNA encoding the S-protein segment stained for spike glycoprotein using ab277624 (green) at 1/1000 dilution in Immunocytochemistry. The nuclei of transfected and untransfected cells are shown in blue with DAPI DNA stain.



Western blot - Anti-Spike glycoprotein antibody [2G1] (ab277624)

**Lanes 2-4 & 6-7 :** Anti-SARS-CoV-2 Spike Glycoprotein RBD antibody [2G1] (ab277624) at 1/3000 dilution

**Lanes 1 & 5 :** Molecular weight ladder

**Lane 2 :** crude homogenate of untransfected control HEK-293 cells  
**Lane 3 :** homogenate of HEK-293 cells expressing SARS-CoV2-bd

**Lane 4 :** homogenate of HEK-293 cells expressing GFP-SARS-CoV2-bd fusion

**Lane 6 :** full length recombinant SARS-CoV2 S-protein expressed in HEK293 at 1 µg

**Lane 7 :** full length recombinant SARS-CoV2 S-protein expressed in HEK293 at 0.1 µg

**Additional bands at:** 60 kDa (possible Loading Control)

Western blot analysis of cells transfected with DNA encoding the S-protein ACE2 binding site in PROT-SARS-CoV2-bd which was

inserted into pCI-Neo-Mod or pCI-Neo-GFP eukaryotic expression vectors, which express either the insert only or the insert fused with GFP using ab277624 (green) at 1/3000 dilution. The blot was also stained with rabbit polyclonal control antibody to HSP60 (red) at 1/5000 dilution.

**Please note:** All products are "FOR RESEARCH USE ONLY. NOT FOR USE IN DIAGNOSTIC PROCEDURES"

### **Our Abpromise to you: Quality guaranteed and expert technical support**

---

- Replacement or refund for products not performing as stated on the datasheet
- Valid for 12 months from date of delivery
- Response to your inquiry within 24 hours
  
- We provide support in Chinese, English, French, German, Japanese and Spanish
- Extensive multi-media technical resources to help you
- We investigate all quality concerns to ensure our products perform to the highest standards

If the product does not perform as described on this datasheet, we will offer a refund or replacement. For full details of the Abpromise, please visit <https://www.abcam.com/abpromise> or contact our technical team.

### **Terms and conditions**

---

- Guarantee only valid for products bought direct from Abcam or one of our authorized distributors