

Product datasheet

Anti-Sbf1 antibody [EPR12567] ab181106

Recombinant **RabMAb**

[1 References](#) [6 Images](#)

Overview

Product name	Anti-Sbf1 antibody [EPR12567]
Description	Rabbit monoclonal [EPR12567] to Sbf1
Host species	Rabbit
Tested applications	Suitable for: WB, IHC-P
Species reactivity	Reacts with: Mouse, Human
Immunogen	Synthetic peptide within Human Sbf1 aa 1750-1850. The exact sequence is proprietary. Database link: O95248
Positive control	WB: Raji, Human brain, Mouse cerebellum, and Mouse testis lysates. IHC-P: Human brain and muscle, and mouse cerebrum tissues.

General notes

Our RabMAb[®] technology is a patented hybridoma-based technology for making rabbit monoclonal antibodies. For details on our patents, please refer to [RabMAb[®] patents](#).

We are constantly working hard to ensure we provide our customers with best in class antibodies. As a result of this work we are pleased to now offer this antibody in purified format. We are in the process of updating our datasheets. The purified format is designated 'PUR' on our product labels. If you have any questions regarding this update, please contact our Scientific Support team.

This product is a [recombinant rabbit monoclonal antibody](#).

Properties

Form	Liquid
Storage instructions	Shipped at 4°C. Store at +4°C short term (1-2 weeks). Upon delivery aliquot. Store at -20°C long term. Avoid freeze / thaw cycle.
Storage buffer	Preservative: 0.01% Sodium azide Constituents: PBS, 40% Glycerol, 0.05% BSA
Purity	Protein A purified
Clonality	Monoclonal

Clone number EPR12567
Isotype IgG

Applications

Our [Abpromise guarantee](#) covers the use of **ab181106** in the following tested applications.

The application notes include recommended starting dilutions; optimal dilutions/concentrations should be determined by the end user.

Application	Abreviews	Notes
WB		1/1000 - 1/10000. Detects a band of approximately 208 kDa (predicted molecular weight: 208 kDa).
IHC-P		1/2000. Perform heat mediated antigen retrieval with Tris/EDTA buffer pH 9.0 before commencing with IHC staining protocol. See IHC antigen retrieval protocols . For unpurified use at 1/250 - 1/500.

Target

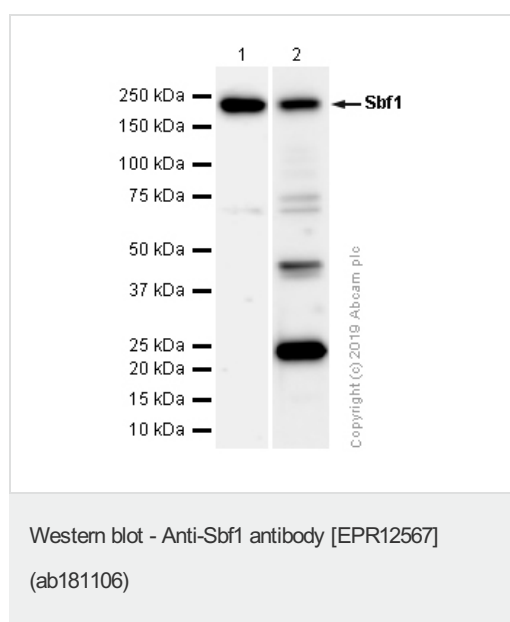
Relevance

Probable pseudophosphatase. Lacks several amino acids in the catalytic pocket which renders it catalytically inactive as a phosphatase. The pocket is however sufficiently preserved to bind phosphorylated substrates, and maybe protect them from phosphatases. Inhibits myoblast differentiation in vitro and induces oncogenic transformation in fibroblasts. May function as a guanine nucleotide exchange factor (GEF) activating RAB28. Promotes the exchange of GDP to GTP, converting inactive GDP-bound Rab proteins into their active GTP-bound form.

Cellular localization

Nuclear

Images



All lanes : Anti-Sbf1 antibody [EPR12567] (ab181106) at 1/1000 dilution (Purified)

Lane 1 : Mouse cerebellum lysates

Lane 2 : Mouse testis lysates

Lysates/proteins at 15 µg per lane.

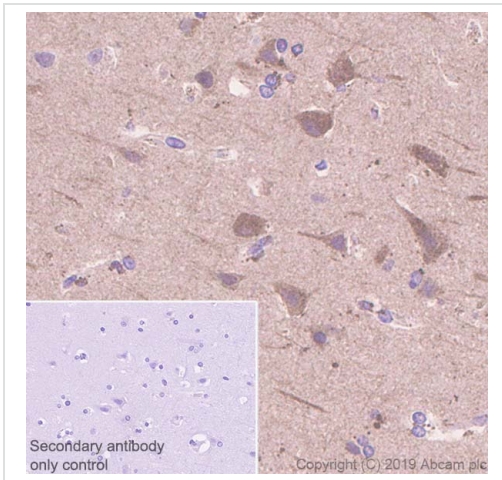
Secondary

All lanes : Goat Anti-Rabbit IgG H&L (HRP) (ab97051) at 1/20000 dilution

Predicted band size: 208 kDa

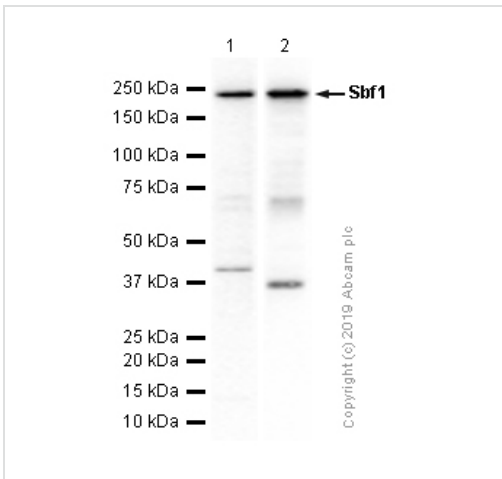
Observed band size: 208 kDa

We are unsure how to define the extra bands.



Immunohistochemistry (Formalin/PFA-fixed paraffin-embedded sections) analysis of human cerebrum tissue sections labeling Sbf1 with purified ab181106 at 1/2000 dilution (0.54 µg/ml). Heat mediated antigen retrieval using Bond Epitope Retrieval Solution 2 (pH 9.0). Rabbit specific IHC polymer detection kit HRP/DAB (ab209101) was used as the secondary antibody. Negative control: PBS instead of the primary antibody. Hematoxylin was used as a counterstain.

Immunohistochemistry (Formalin/PFA-fixed paraffin-embedded sections) - Anti-Sbf1 antibody [EPR12567] (ab181106)



Western blot - Anti-Sbf1 antibody [EPR12567] (ab181106)

All lanes : Anti-Sbf1 antibody [EPR12567] (ab181106) at 1/1000 dilution (Purified)

Lane 1 : Raji (Human Burkitt's lymphoma B lymphocyte) whole cell lysates

Lane 2 : Human brain lysates

Lysates/proteins at 15 µg per lane.

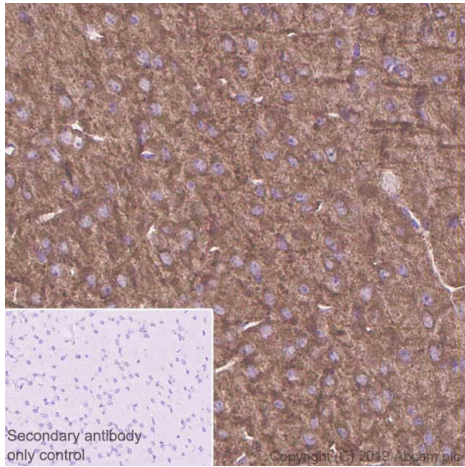
Secondary

All lanes : Goat Anti-Rabbit IgG H&L (HRP) (ab97051) at 1/20000 dilution

Predicted band size: 208 kDa

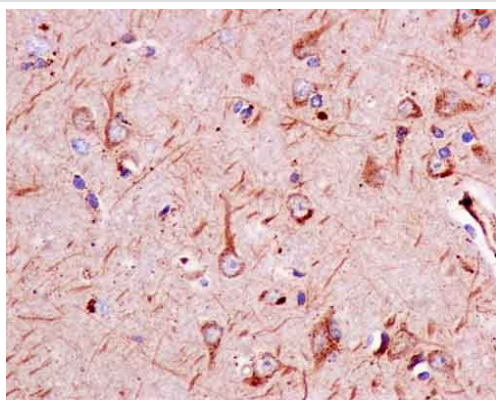
Observed band size: 208 kDa

We are unsure how to define the extra bands.



Immunohistochemistry (Formalin/PFA-fixed paraffin-embedded sections) - Anti-Sbf1 antibody
[EPR12567] (ab181106)

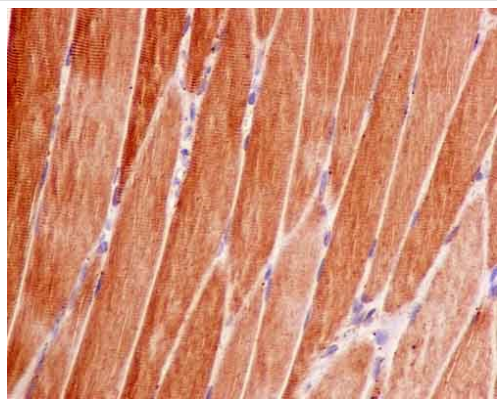
Immunohistochemistry (Formalin/PFA-fixed paraffin-embedded sections) analysis of mouse cerebrum tissue sections labeling Sbf1 with purified ab181106 at 1/2000 dilution (0.54 $\mu\text{g}/\text{ml}$). Heat mediated antigen retrieval using Bond Epitope Retrieval Solution 2 (pH 9.0). Rabbit specific IHC polymer detection kit HRP/DAB (ab209101) was used as the secondary antibody. Negative control: PBS instead of the primary antibody. Hematoxylin was used as a counterstain.



Immunohistochemistry (Formalin/PFA-fixed paraffin-embedded sections) - Anti-Sbf1 antibody
[EPR12567] (ab181106)

Immunohistochemical analysis of paraffin-embedded Human brain tissue labeling Sbf1 with unpurified ab181106 at 1/500 dilution followed by prediluted HRP Polymer for Rabbit IgG. Counterstained with Hematoxylin.

Perform heat mediated antigen retrieval with EDTA buffer pH 9 before commencing with IHC staining protocol.



Immunohistochemistry (Formalin/PFA-fixed paraffin-embedded sections) - Anti-Sbf1 antibody [EPR12567] (ab181106)

Immunohistochemical analysis of paraffin-embedded Human muscle tissue labeling Sbf1 with unpurified ab181106 at 1/500 dilution followed by prediluted HRP Polymer for Rabbit IgG. Counterstained with Hematoxylin.

Perform heat mediated antigen retrieval with EDTA buffer pH 9 before commencing with IHC staining protocol.

Please note: All products are "FOR RESEARCH USE ONLY. NOT FOR USE IN DIAGNOSTIC PROCEDURES"

Our Abpromise to you: Quality guaranteed and expert technical support

- Replacement or refund for products not performing as stated on the datasheet
- Valid for 12 months from date of delivery
- Response to your inquiry within 24 hours
- We provide support in Chinese, English, French, German, Japanese and Spanish
- Extensive multi-media technical resources to help you
- We investigate all quality concerns to ensure our products perform to the highest standards

If the product does not perform as described on this datasheet, we will offer a refund or replacement. For full details of the Abpromise, please visit <https://www.abcam.com/abpromise> or contact our technical team.

Terms and conditions

- Guarantee only valid for products bought direct from Abcam or one of our authorized distributors