

## Product datasheet

# Anti-Sca1 / Ly6A/E antibody [E13 161-7] - Hematopoietic Stem Cell Marker ab51317

★★★★★ [5 Abreviews](#) [28 References](#) [2 Images](#)

### Overview

<b>Product name</b>	Anti-Sca1 / Ly6A/E antibody [E13 161-7] - Hematopoietic Stem Cell Marker
<b>Description</b>	Rat monoclonal [E13 161-7] to Sca1 / Ly6A/E - Hematopoietic Stem Cell Marker
<b>Host species</b>	Rat
<b>Tested applications</b>	<b>Suitable for:</b> Flow Cyt, ICC/IF <b>Unsuitable for:</b> WB
<b>Species reactivity</b>	<b>Reacts with:</b> Mouse
<b>Immunogen</b>	Tissue, cells or virus. This information is proprietary to Abcam and/or its suppliers.
<b>Positive control</b>	ICC/IF: Mouse TH2 cell line. Flow Cyt: C57 BL/6 mouse splenocytes
<b>General notes</b>	<p>This antibody clone is manufactured by Abcam. If you require a custom buffer formulation or conjugation for your experiments, please contact <a href="mailto:orders@abcam.com">orders@abcam.com</a>.</p> <p>The Life Science industry has been in the grips of a reproducibility crisis for a number of years. Abcam is leading the way in addressing this with our range of recombinant monoclonal antibodies and knockout edited cell lines for gold-standard validation. Please check that this product meets your needs before purchasing.</p> <p>If you have any questions, special requirements or concerns, please send us an inquiry and/or contact our Support team ahead of purchase. Recommended alternatives for this product can be found below, along with publications, customer reviews and Q&amp;As</p>

### Properties

<b>Form</b>	Liquid
<b>Storage instructions</b>	Shipped at 4°C. Upon delivery aliquot and store at -20°C. Avoid repeated freeze / thaw cycles.
<b>Storage buffer</b>	pH: 7.40 Preservative: 0.02% Sodium azide Constituent: PBS
<b>Purity</b>	Protein G purified

<b>Clonality</b>	Monoclonal
<b>Clone number</b>	E13 161-7
<b>Isotype</b>	IgG2a

## Applications

**The Abpromise guarantee** Our **Abpromise guarantee** covers the use of ab51317 in the following tested applications. The application notes include recommended starting dilutions; optimal dilutions/concentrations should be determined by the end user.

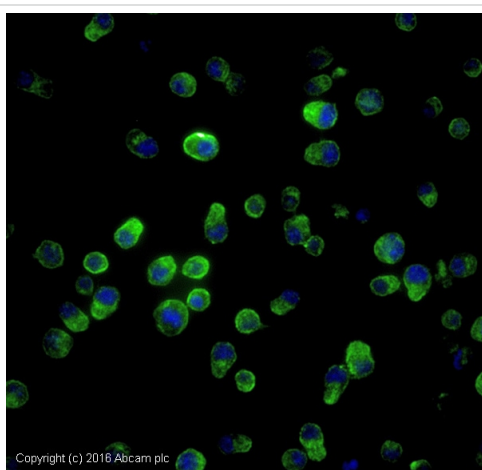
Application	Abreviews	Notes
Flow Cyt		Use 0.2µg for 10 <sup>6</sup> cells.
ICC/IF	★★★★★ (2)	Use a concentration of 5 µg/ml.

**Application notes** Is unsuitable for WB.

## Target

<b>Function</b>	T-cell activation.
<b>Tissue specificity</b>	Widely expressed.
<b>Sequence similarities</b>	Contains 1 UPAR/Ly6 domain.
<b>Post-translational modifications</b>	O-glycosylated. Not N-glycosylated. Not phosphorylated.
<b>Cellular localization</b>	Cell membrane.

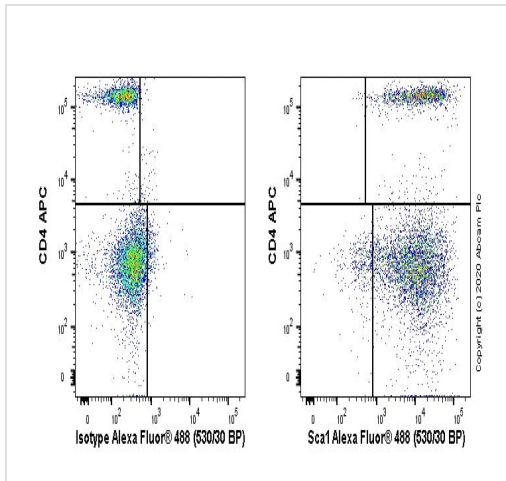
## Images



Copyright (c) 2016 Abcam plc

Immunocytochemistry/ Immunofluorescence - Anti-Sca1 / Ly6A/E antibody [E13 161-7] - Hematopoietic Stem Cell Marker (ab51317)

ab51317 stained mouse TH2 cells. The cells were 4% formaldehyde fixed for 4 minutes at room temperature and then incubated in 1%BSA / 10% normal goat serum / 0.3M glycine in 0.1% PBS-Tween for 1hour at room temperature to permeabilise the cells and block non-specific protein-protein interactions. The cells were then incubated with the antibody (ab51317 at 10µg/ml) overnight at +4°C. The secondary antibody (pseudo-colored green) was **Goat Anti-Rat IgG H&L (Alexa Fluor® 488) preadsorbed (ab150165)** used at a 1/1000 dilution for 1hour at room temperature. DAPI was used to stain the cell nuclei (pseudo-colored blue) at a concentration of 1.43µM for 1hour at room temperature.



Flow Cytometry - Anti-Sca1 / Ly6A/E antibody [E13 161-7] - Hematopoietic Stem Cell Marker (ab51317)

Flow cytometry staining of C57 BL/6 mouse splenocytes with ab51317 (right) or Rat IgG2 $\kappa$  (**ab18450**) isotype (left). Cells were incubated for 30 min on ice in 1x PBS containing 10 % mouse serum/10 % normal goat serum to block FC receptors and non-specific protein-protein interaction followed by the antibody (ab51317) or Rat IgG2 $\kappa$  (**ab18450**) isotype ( $1 \times 10^6$  in 100 $\mu$ l at 0.2 $\mu$ g/ml) for 30 min on ice.

The secondary antibody Goat anti-rat IgG H&L (Alexa Fluor® 488, pre-adsorbed) (**ab150165**) was used at 1/2000 dilution for 30 min on ice. The cells were simultaneously stained with CD4.

Acquisition of >30,000 events were collected using a 50 mW Blue laser (488nm) and 530/30 bandpass filter. Events were gated on live lymphocytes.

**Please note:** All products are "FOR RESEARCH USE ONLY. NOT FOR USE IN DIAGNOSTIC PROCEDURES"

### Our Abpromise to you: Quality guaranteed and expert technical support

- Replacement or refund for products not performing as stated on the datasheet
- Valid for 12 months from date of delivery
- Response to your inquiry within 24 hours
- We provide support in Chinese, English, French, German, Japanese and Spanish
- Extensive multi-media technical resources to help you
- We investigate all quality concerns to ensure our products perform to the highest standards

If the product does not perform as described on this datasheet, we will offer a refund or replacement. For full details of the Abpromise, please visit <https://www.abcam.com/abpromise> or contact our technical team.

### Terms and conditions

- Guarantee only valid for products bought direct from Abcam or one of our authorized distributors