

Product datasheet

Anti-Sca1 / Ly6A/E antibody [D7] (FITC) ab25031

★★★★★ 2 Abreviews 14 References 3 Images

Overview

Product name	Anti-Sca1 / Ly6A/E antibody [D7] (FITC)
Description	Rat monoclonal [D7] to Sca1 / Ly6A/E (FITC)
Host species	Rat
Conjugation	FITC. Ex: 493nm, Em: 528nm
Specificity	This antibody is specific for Ly6A.2 and Ly6E.1, allelic members of the Ly6 multigene family.
Tested applications	Suitable for: ICC/IF, Flow Cyt, IP, WB, IHC-Fr, Cellular Activation, IHC-P
Species reactivity	Reacts with: Mouse
Immunogen	Tissue, cells or virus corresponding to Mouse Sca1/ Ly6A/E. IL2 dependent T cell line CTL-L.
Positive control	ICC/IF: MEF cells. Flow Cyt: Con-A stimulated C57BL/6 mouse splenocytes.

Properties

Form	Liquid
Storage instructions	Shipped at 4°C. Store at +4°C.
Storage buffer	Preservative: 0.1% Sodium azide Constituent: PBS
Purity	Ascites
Purification notes	Purified from ascites.
Clonality	Monoclonal
Clone number	D7
Isotype	IgG2a
Light chain type	kappa

Applications

Our [Abpromise guarantee](#) covers the use of **ab25031** in the following tested applications.

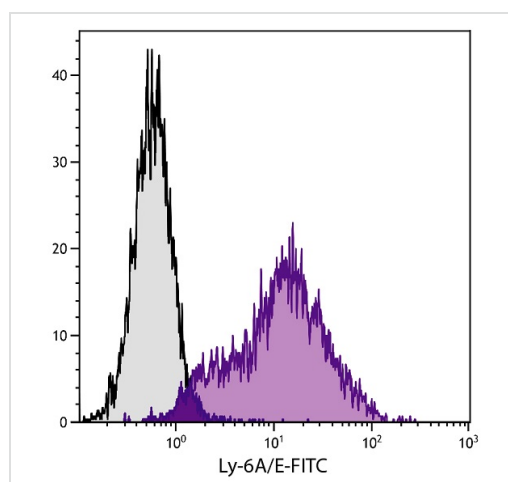
The application notes include recommended starting dilutions; optimal dilutions/concentrations should be determined by the end user.

Application	Abreviews	Notes
ICC/IF	★★★★★	Use a concentration of 5 µg/ml.
Flow Cyt	★★★★★	Use 1µg for 10 ⁶ cells. ab18446 - Rat monoclonal IgG2a, is suitable for use as an isotype control with this antibody.
IP		Use at an assay dependent concentration.
WB		Use at an assay dependent concentration. Predicted molecular weight: 14 kDa.
IHC-Fr		Use at an assay dependent concentration.
Cellular Activation		Use at an assay dependent concentration.
IHC-P		Use at an assay dependent concentration. PubMed: 21858462

Target

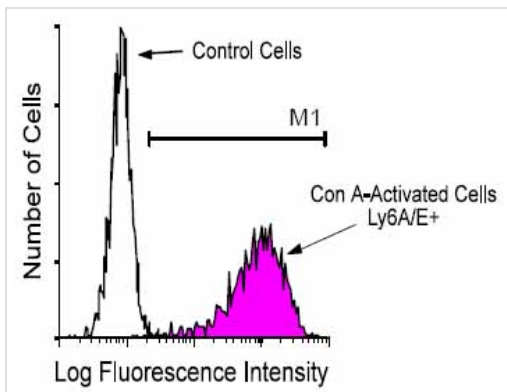
Function	T-cell activation.
Tissue specificity	Widely expressed.
Sequence similarities	Contains 1 UPAR/Ly6 domain.
Post-translational modifications	O-glycosylated. Not N-glycosylated. Not phosphorylated.
Cellular localization	Cell membrane.

Images



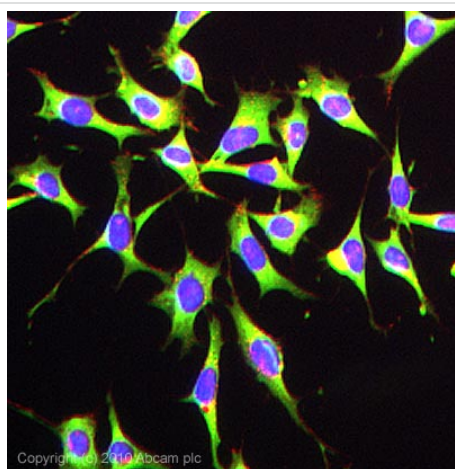
Flow Cytometry analysis of Con-A stimulated C57BL/6 mouse splenocytes labeling Ly-6A with ab25031 at 3 µg/10⁶ cells dilution (purple). Grey - Isotype Control, Rat IgG2a-FITC.

Flow Cytometry - Anti-Sca1 / Ly6A/E antibody [D7]
(FITC) (ab25031)



Flow Cytometry - Anti-Sca1 / Ly6A/E antibody [D7] (FITC) (ab25031)

BALB/c spleen cells were activated by incubation for 48 hours with concanavalin A. After harvesting, the cells were stained with Rat anti-mouse Ly6A/E-FITC (less than or equal to 0.5 ug/10⁶ cells) and activated cells were gated and analyzed on a FACScan flow cytometer.



Immunocytochemistry/ Immunofluorescence - Anti-Sca1 / Ly6A/E antibody [D7] (FITC) (ab25031)

ICC/IF image of ab25031 stained MEF cells. The cells were 4% PFA fixed (10 min) and then incubated in 1%BSA / 10% normal goat serum / 0.3M glycine in 0.1% PBS-Tween for 1h to permeabilise the cells and block non-specific protein-protein interactions. The cells were then incubated with the antibody (ab25031, 5µg/ml) overnight at +4°C. Alexa Fluor® 594 WGA was used to label plasma membranes (red) at a 1/200 dilution for 1h. DAPI was used to stain the cell nuclei (blue) at a concentration of 1.43µM.

Please note: All products are "FOR RESEARCH USE ONLY AND ARE NOT INTENDED FOR DIAGNOSTIC OR THERAPEUTIC USE"

Our Abpromise to you: Quality guaranteed and expert technical support

- Replacement or refund for products not performing as stated on the datasheet
- Valid for 12 months from date of delivery
- Response to your inquiry within 24 hours
- We provide support in Chinese, English, French, German, Japanese and Spanish
- Extensive multi-media technical resources to help you
- We investigate all quality concerns to ensure our products perform to the highest standards

If the product does not perform as described on this datasheet, we will offer a refund or replacement. For full details of the Abpromise, please visit <https://www.abcam.com/abpromise> or contact our technical team.

Terms and conditions

- Guarantee only valid for products bought direct from Abcam or one of our authorized distributors