

Product datasheet

Anti-SCAMP2/SC2 antibody ab3431

3 References 1 Image

Overview

| | |
|----------------------------|---|
| Product name | Anti-SCAMP2/SC2 antibody |
| Description | Rabbit polyclonal to SCAMP2/SC2 |
| Host species | Rabbit |
| Specificity | Detects Secretory Carrier Membrane Protein 2 (SCAMP 2) from mouse testes and AtT20 cell extract, as well as Chinese hamster ovary (CHO) cell extract. |
| Tested applications | Suitable for: IHC-Fr, IP, ICC, WB |
| Species reactivity | Reacts with: Mouse, Hamster, Cow, Human |
| Immunogen | Synthetic peptide corresponding to Human SCAMP2/SC2 aa 1-17. Sequence: MSAFDTNPFADPVDVNP (Peptide available as ab4970) |
| | Run BLAST with Run BLAST with |
| General notes | This product was previously labelled as SCAMP2 |

Properties

| | |
|-----------------------------|--|
| Form | Liquid |
| Storage instructions | Shipped at 4°C. Store at +4°C short term (1-2 weeks). Upon delivery aliquot. Store at -20°C or -80°C. Avoid freeze / thaw cycle. |
| Storage buffer | Preservative: 0.05% Sodium azide Constituents: 0.1% BSA, 99% PBS |
| Purity | Immunogen affinity purified |
| Clonality | Polyclonal |
| Isotype | IgG |

Applications

Our [Abpromise guarantee](#) covers the use of **ab3431** in the following tested applications.

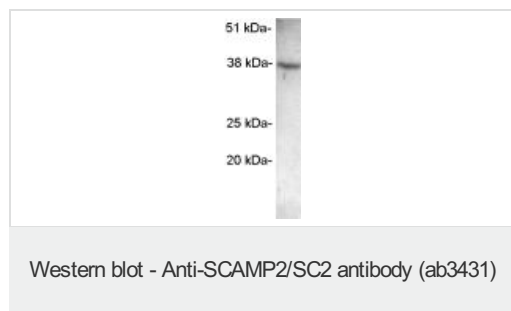
The application notes include recommended starting dilutions; optimal dilutions/concentrations should be determined by the end user.

| Application | Abreviews | Notes |
|-------------|-----------|---|
| IHC-Fr | | Use at an assay dependent concentration. |
| IP | | Use at an assay dependent concentration. |
| ICC | | Use at an assay dependent concentration. |
| WB | | Use a concentration of 2 µg/ml. Can be blocked with SCAMP2/SC2 peptide (ab4970) . |

Target

| | |
|------------------------------|--|
| Function | Functions in post-Golgi recycling pathways. Acts as a recycling carrier to the cell surface. |
| Tissue specificity | Widely expressed. |
| Sequence similarities | Belongs to the SCAMP family. |
| Cellular localization | Golgi apparatus > trans-Golgi network membrane. Recycling endosome membrane. |

Images



Western blot detection of SCAMP2 on AtT20 extract using ab3431.

Please note: All products are "FOR RESEARCH USE ONLY AND ARE NOT INTENDED FOR DIAGNOSTIC OR THERAPEUTIC USE"

Our Abpromise to you: Quality guaranteed and expert technical support

- Replacement or refund for products not performing as stated on the datasheet
- Valid for 12 months from date of delivery
- Response to your inquiry within 24 hours
- We provide support in Chinese, English, French, German, Japanese and Spanish
- Extensive multi-media technical resources to help you
- We investigate all quality concerns to ensure our products perform to the highest standards

If the product does not perform as described on this datasheet, we will offer a refund or replacement. For full details of the Abpromise, please visit <https://www.abcam.com/abpromise> or contact our technical team.

Terms and conditions

- Guarantee only valid for products bought direct from Abcam or one of our authorized distributors